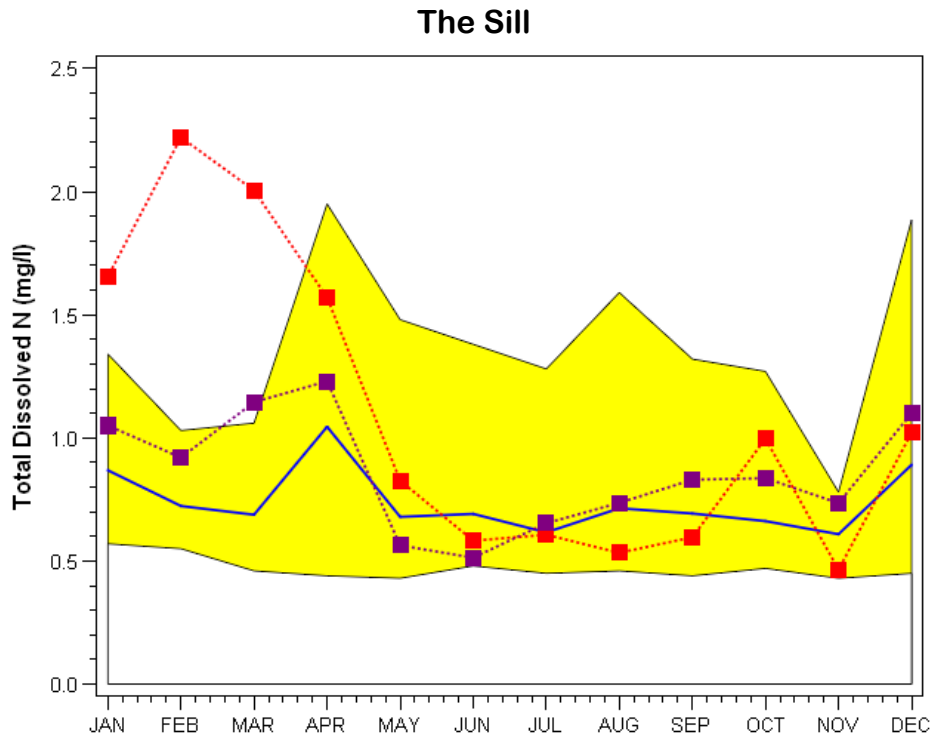


## Graphs of Current Data vs. Long Term Results in the Corsica River

To better understand current water quality conditions and how they compare to the range and the average values that were measured in past years, nutrient and water quality data for the Corsica River have been analyzed and graphed in the following format:



In the example graph above, the yellow shaded area represents the range of monthly mean values that have occurred from 2006 to 2009. The blue line shows the average of the monthly mean values over that same time period. The red squares represent the monthly mean values for 2010, and the purple squares represent the monthly mean values for 2011.

The data used in this analysis were collected as part of routine nutrient sampling or as calibration data for the Shallow Water Monitoring program. To view the complete collection of graphs depicting water quality conditions in the Corsica River, click on the station names below:

[XHH4916](#) - The Sill (continuous monitoring station)

[XHH4931](#) - Possum Point (continuous monitoring station)

[XHH3851](#) - Sycamore Point (continuous monitoring station) \*

[XHH4528](#) (dataflow calibration station near Tilghman Cove)

[XHH4742](#) (tributary monitoring station between Rocky Pt. and Jacob's Nose)

\* At Sycamore Point, data range (yellow band) and mean values (blue line) are reported for the period 2005-2009.