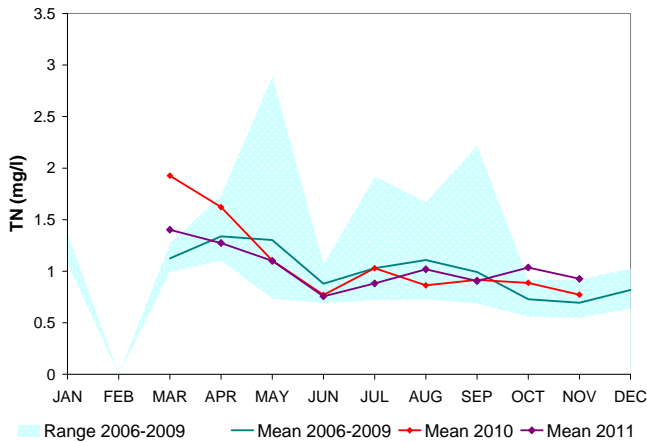
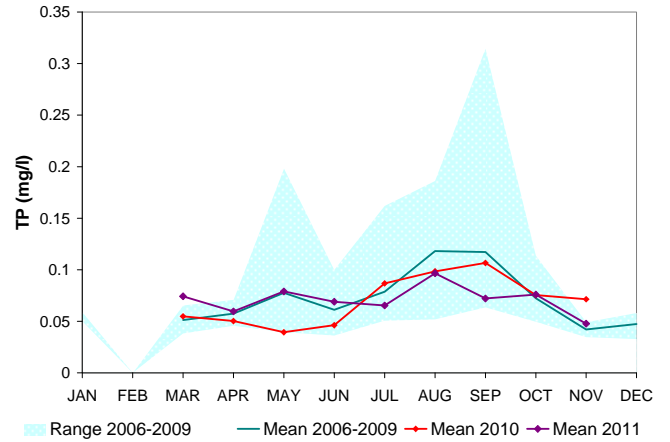
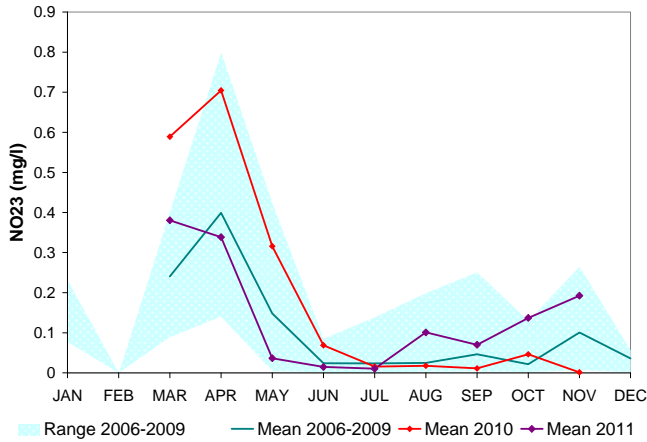
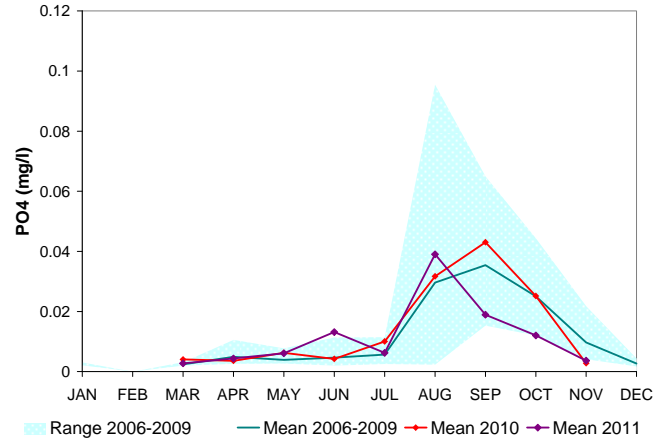
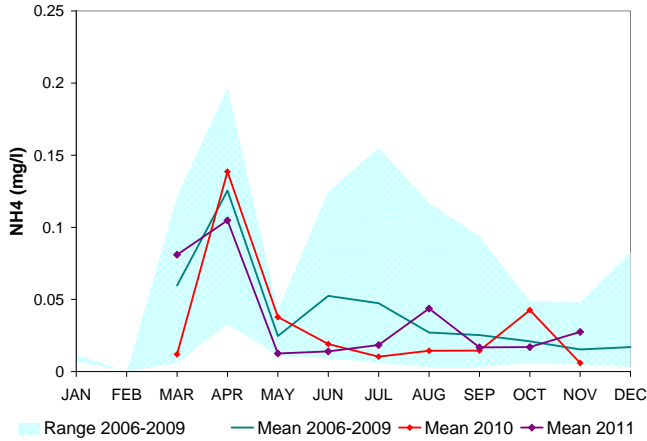


Corsica River Nutrients – Data Summary 2005-2011

MD DNR Shallow Water Monitoring Program

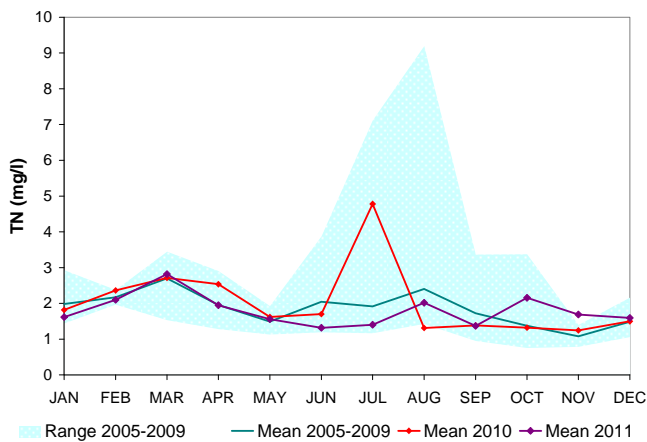
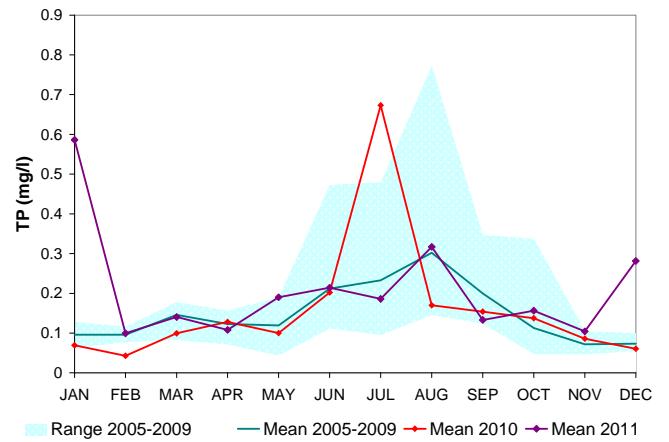
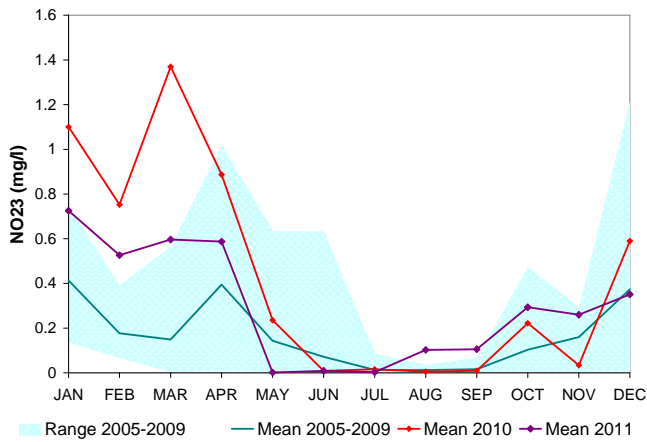
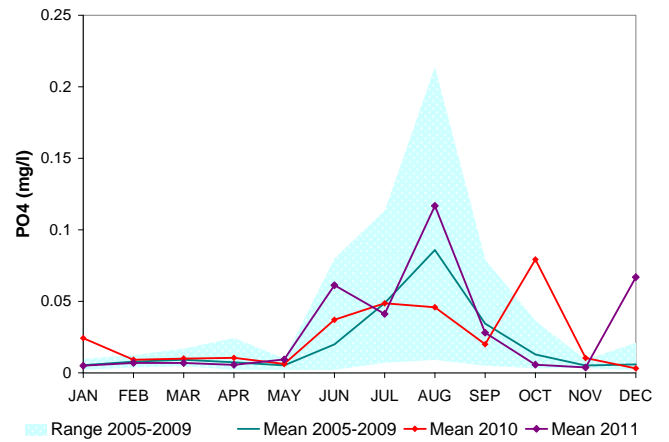
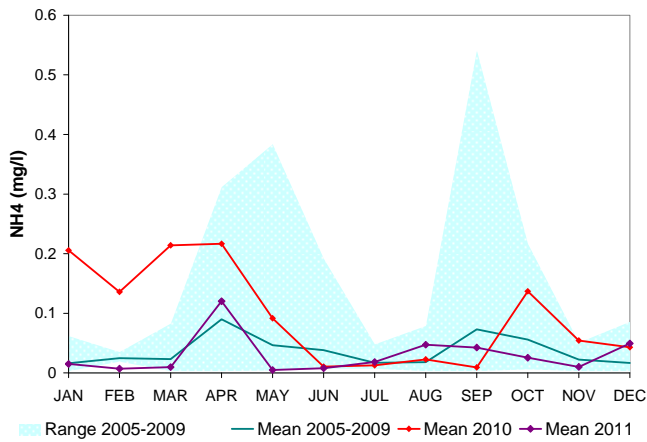


Nutrient Concentrations at The Sill

Ammonia (NH₄) values in 2010 and 2011 were slightly below average in the summer (June – July).

Nitrite + Nitrate (NO₂₃) concentrations were above average in Spring 2010 and Fall 2011, but not outside of the range of observed values at this station.

Total nitrogen (TN), orthophosphate (PO₄), and total phosphorus (TP) were all near average for 2010 and 2011.



Nutrient Concentrations at Sycamore Point

Higher than average ammonia (NH₄) concentrations were measured in the Spring of 2010.

Nitrate + Nitrite (NO₂₃) concentrations in Spring 2010 and Spring 2011 were the highest values measured during 2005-2011.

Unusually high values of total nitrogen (TN) and total phosphorus (TP) were measured in July 2010.