



Martin O'Malley, Governor
Anthony G. Brown, Lt. Governor
John R. Griffin, Secretary
Joseph P. Gill, Deputy Secretary

DRAFT

Quality Assurance Project Plan

**for the
Maryland Department of Natural Resources
Chesapeake Bay
Shallow Water Quality Monitoring Program
for the period July 1, 2010 - June 30, 2011**

1 July, 2010

Quality Assurance Project Plan for the Maryland Department of Natural Resources Chesapeake Bay Shallow Water Quality Monitoring Program

Prepared by:

Bruce Michael, Tom Parham, Mark Trice, Brian Smith, Diana Domotor, Ben Cole,
and Matt Hall

Resource Assessment Service/Tidewater Ecosystem Assessment
Maryland Department of Natural Resources
Tawes Building, D-2
580 Taylor Avenue
Annapolis, MD 21401

Website Address:

<http://dnr.maryland.gov>

Toll Free in Maryland:

1-877-620-8DNR, ext: 8630

Out of state call: 410-260-8630

TTY users call via the MD Relay:

711 (within MD)

Out of state call: 1-800-735-2258

© 2010 Maryland Department of Natural Resources

The facilities and services of the Maryland Department of Natural Resources are available to all without regard to race, color, religion, sex, sexual orientation, age, national origin or physical or mental disability. This document is available in alternative format upon request from a qualified individual.

Martin O'Malley, Governor

Anthony G. Brown, Lt. Governor



Printed on Recycled Paper

**Quality Assurance Project Plan
for the
Maryland Department of Natural Resources
Chesapeake Bay
Shallow Water Quality Monitoring Program
for the period July 1, 2010 - June 30, 2011**

1 July, 2010

Thomas Parham, Director/Principal Investigator
Maryland Department of Natural Resources

Bruce Michael, Quality Assurance Officer
Maryland Department of Natural Resources

Carl Zimmerman, Director of Analytical Services/Quality Assurance Officer
Chesapeake Biological Laboratory
University of Maryland, Center for Environmental Science

Richard Batiuk, U.S. EPA CBPO QA Officer

Peter Tango, U.S. EPA CBPO Project Officer

TABLE OF CONTENTS

LIST OF TABLES

Table 1 Shallow-water monitoring for 2010: Bay segment, sample type(s) and Designated Uses for which the collected data will be used to assess water quality criteria..... 3

Table 2. Water Quality Mapping Cruise Schedule (April through October 2010)..... 4

Table 3. 2010 Continuous monitoring stations..... 7

Table 4. 2010 Water quality mapping calibration stations 8

Table 5. *In situ* monitor performance checks and acceptance criteria..... 10

Table 6. Discrete sample performance checks and acceptance criteria..... 10

Table 7. Continuous monitoring *in situ* water column parameters..... 11

Table 8. Water Quality Mapping *in situ* water column parameters..... 12

Table 9. Shallow Water Monitoring Program Grab Sample Water Column Parameters, Detection Limits, Methods, References, and Holding Times and Conditions 13

Table 10. Acceptable drift tolerances for YSI 6600EDS/V2 sondes..... 18

Table 11. Deployment dates for Maryland DNR Continuous Monitoring Sites 78

Table 12. Sampling Matrix for Maryland DNR Water Quality Mapping Systems..... 80

LIST OF FIGURES

Figure 1. Map of 2010 continuous monitoring stations and water quality mapping systems, with progress of assessment 9

Figure 2. Conceptual diagram of continuous monitoring data management components, including automated data submission from DNR to the Bay Program 21

Figure 3. Conceptual diagram of water quality mapping data management components, including automated data submission from DNR to the Bay Program 21

Figure 4: Continuous Monitoring Field Sheet 35

Figure 5: Continuous Monitoring Calibration Sheet 51

Figure 6: Water Quality Mapping Calibration Sheet..... 58

ACRONYMS AND ABBREVIATIONS

AA	- Autoanalyzer
AMQAW	- Analytical Methods and Quality Assurance Workgroup (a workgroup of the Chesapeake Bay Program's Monitoring Subcommittee)
C	- Carbon
CBP	- EPA's Chesapeake Bay Program
CBPO	- EPA's Chesapeake Bay Program Office
CBL	- University of Maryland's Chesapeake Biological Laboratory
cm	- Centimeter
CMC	- Chlorophyll Measurement Computer
CSSP	- Coordinated Split Sample Program
d	- Day
DHMH	- Maryland Department of Health and Mental Hygiene
DI	- Deionized
DNR	- Maryland Department of Natural Resources
DO	- Dissolved Oxygen
DU	- Designated Use
EPA	- U.S. Environmental Protection Agency
FGDC	- Federal Geographic Data Commission
g	- Gram
h	- Hour
L	- Liter
m	- Meter
MDE	- Maryland Department of the Environment
min.	- Minute
mg	- Milligram
ml or mL	- Milliliter
mm	- Millimeter
N	- Nitrogen
NERR	- National Estuarine Research Reserve
NIST	- National Institute of Science and Technology
nm	- Nanometer
no.	- Number
NO ₂	- Nitrite
NO ₂₃	- Nitrate + Nitrite
NO ₃	- Nitrate
OD	- Optical Density
P	- Phosphorus
PAR	- Photosynthetic Active Radiation
PC	- Particulate Carbon (Organic)
PC	- Personal Computer
PIP	- Particulate Inorganic Phosphorus
PN	- Particulate Nitrogen
PO ₄	- Phosphate
PP	- Particulate Phosphorus
ppt	- Parts Per Thousand
QA	- Quality Assurance
QAO	- Quality Assurance Officer (Unless Otherwise Noted, This Refers To The DNR QAO)
QAPP	- Quality Assurance Project Plan
QA/QC	- Quality Assurance/Quality Control

QC	- Quality Control
R/V	- Research Vessel
SAS	- Statistical Analysis System
SAV	- Submerged Aquatic Vegetation
SMCRP	- St. Mary's College River Project
TDN	- Total Dissolved Nitrogen
TDP	- Total Dissolved Phosphorus
TMDL	- Total Maximum Daily Load
trib	- Bay Tributary
TSS	- Total Suspended Solids
USDI	- U.S. Department of the Interior
USGS	- U.S. Geological Survey
VIMS	- Virginia Institute of Marine Science
°C	- degrees Celsius

PREFACE

This document is intended to describe in detail the activities conducted under the Shallow Water Monitoring Program of the Maryland Department of Natural Resources Chesapeake Bay Water Quality Monitoring Program. This program includes water quality mapping and continuous monitoring in the tidal tributaries of Maryland's Chesapeake Bay. This program is funded through the Maryland Department of Natural Resources, the U.S. Environmental Protection Agency, the National Oceanic and Atmospheric Administration, and local governments.

LIST OF PREPARERS

Editors:

Ben Cole, Natural Resource Biologist, Water Quality Informatics, Tidewater Ecosystem Assessment, Resource Assessment Service, Maryland Department of Natural Resources, 580 Taylor Avenue, D-2, Annapolis, Maryland 21401.

Diana Domotor, Research Statistician, Tidewater Ecosystem Assessment, Resource Assessment Service, Maryland Department of Natural Resources, 580 Taylor Avenue, D-2, Annapolis, Maryland 21401.

Matt Hall, Project Leader, Water Quality Informatics, Tidewater Ecosystem Assessment, Resource Assessment Service, Maryland Department of Natural Resources, 580 Taylor Avenue, D-2, Annapolis, Maryland 21401.

Tom Parham, Director, Tidewater Ecosystem Assessment, Resource Assessment Service, Maryland Department of Natural Resources, 580 Taylor Avenue, D-2, Annapolis, Maryland 21401.

Brian Smith, Program Manager, Monitoring Integration, Tidewater Ecosystem Assessment, Resource Assessment Service, Maryland Department of Natural Resources, 580 Taylor Avenue, D-2, Annapolis, Maryland 21401.

Mark Trice, Chief, Water Quality Informatics, Tidewater Ecosystem Assessment, Resource Assessment Service, Maryland Department of Natural Resources, 580 Taylor Avenue, D-2, Annapolis, Maryland 21401.

Contributors:

Sally Bowen, Program Chief, Monitoring Field Office, Monitoring and Non-Tidal Assessment, Resource Assessment Service, Maryland Department of Natural Resources, 1919 Lincoln Drive, Annapolis, Maryland 21401.

Nancy Kaumeyer, Chesapeake Biological Laboratory, University of Maryland, Center for Environmental Science, Solomons, Maryland, 20688-0038.

Bill Romano, Environmental Research Statistician, Tidewater Ecosystem Assessment, Resource Assessment Service, Maryland Department of Natural Resources, 580 Taylor Avenue, D-2, Annapolis, Maryland 21401.

Jamie Strong, Natural Resources Biologist, Monitoring and Non-Tidal Assessment, Resource Assessment Service, Maryland Department of Natural Resources, 1919 Lincoln Drive, Annapolis, Maryland 21401.

John Zimmerelli, Natural Resources Biologist, Monitoring and Non-Tidal Assessment, Resource Assessment Service, Maryland Department of Natural Resources, Field Office, 1919 Lincoln Drive, Annapolis, Maryland 21401.

Carl Zimmerman, Chesapeake Biological Laboratory, University of Maryland, Center for Environmental Science, Solomons, Maryland, 20688-0038.

DISTRIBUTION LIST

Rich Batiuk, Associate Director for Science/Quality Assurance Officer, Chesapeake Bay Program Office, U.S. Environmental Protection Agency, 410 Severn Avenue, Suite 109, Annapolis, MD 21403.

Sally Bowen, Program Chief, Monitoring Field Office, Monitoring and Non-Tidal Assessment, Resource Assessment Service, Maryland Department of Natural Resources, 1919 Lincoln Drive, Annapolis, Maryland 21401.

Dr. Walter Boynton, Professor, University of Maryland Center for Environmental Science, P. O. Box 38, Solomons, Maryland 20688.

Mary Ellen Ley, Quality Assurance Coordinator, US Geological Survey/Chesapeake Bay Program Office, 410 Severn Avenue, Suite 109, Annapolis, MD 21403.

Bruce Michael, Director, Resource Assessment Service, Maryland Department of Natural Resources, 580 Taylor Avenue, C-2, Annapolis, Maryland 21401.

Dr. Ken Moore, Professor of Marine Science, Department of Biological Sciences / VIMS P.O. Box 1346, Gloucester Pt., VA 23062-1346

Thomas Parham, Director, Tidewater Ecosystem Assessment, Resource Assessment Service, Maryland Department of Natural Resources, 580 Taylor Avenue, D-2, Annapolis, Maryland 21401.

Dr. Chris Tanner, Professor of Biology, Department of Biology, St. Mary's College of Maryland, St. Mary's City, Maryland 20686

Mark Trice, Chief, Water Quality Informatics, Tidewater Ecosystem Assessment, Resource Assessment Service, Maryland Department of Natural Resources, 580 Taylor Avenue, D-2, Annapolis, Maryland 21401.

Beth Ebersole, Director, Research Reserve Program, Coastal Zone Management, Maryland Department of Natural Resources, 580 Taylor Avenue, D-2, Annapolis, Maryland 21401.

This Quality Assurance Project Plan is also available on-line on the Maryland Department of Natural Resources (DNR) Eyes on the Bay web site: <http://www.eyesonthebay.net> and the DNR Bay Monitoring web site: <http://www.dnr.state.md.us/bay/monitoring/index.html>

1. INTRODUCTION AND PROJECT DESCRIPTION

1.1 Background

The Chesapeake Bay Program Monitoring and Analysis Subcommittee's Tidal Monitoring and Analysis Workgroup (TMAW) has undertaken the role of redesigning the Tidal Monitoring Network. The new Tidal Monitoring Network focuses on meeting the Water Quality Protection and Restoration goals and objectives of the Chesapeake 2000 Agreement. Water quality monitoring information will be used to define nutrient and sediment conditions necessary to protect living resources (water quality to support crabs, oysters, and fish) and vital habitats (water quality to support submerged aquatic vegetation - SAV). The information will also be used to develop and assess water quality criteria with the goal of removing the Bay and its tidal rivers from the list of impaired waters. Water quality information is required to support refinement, calibration and validation of the Chesapeake Bay Water Quality Model.

As part of the new Tidal Monitoring Network, Maryland Department of Natural Resources (DNR) and its federal, state and local partners are working together to implement a comprehensive and coordinated monitoring program to assess the Bay's shallow water habitats required by the development of the new water quality criteria. Until 2002, sparse water quality data were collected in shallow portions of Chesapeake Bay and its tributaries. This presented a major gap in data for use in evaluation of new Designated Use Areas and Water Quality Criteria.

Water quality and habitat measurements will be made using water quality mapping technology and fixed continuous monitors to provide characterization of shallow water habitats that are key to living resources. Water quality mapping was piloted by the states of Maryland and Virginia and academic researchers and was extensively tested by Maryland in the Magothy River, Severn River, and Tangier Sound from 1999 to 2002. Continuous monitoring was initially implemented by Maryland in the Pocomoke River to monitor water quality in response to the *Pfiesteria piscicida* outbreak in 1998. The implementation of shallow water monitoring technology is coordinated between States and their partners employing similar equipment and methodology to ensure bay-wide compatibility and comparisons. Detailed information describing these technologies and the 1998 - 2009 results can be found on DNR's Eyes on the Bay web site (<http://www.eyesonthebay.net/>.)

CONTINUOUS MONITORING

Maryland DNR is conducting Continuous Monitoring in 14 Chesapeake Bay segments in 2010 and Water Quality Mapping in four segments (Figure 1, Table 1). This design comprises monthly water quality mapping cruises with approximately two continuous monitoring sites in each segment. Monitoring covered in this QAPP will primarily be conducted April through October 2010.

Continuous monitoring sites (Table 3) will be deployed by the end of April, 2010 and most will be removed by the end of October, 2010 in each of 14 Maryland Chesapeake Bay segments (Figure 1). Sites in the Corsica River and Baltimore Harbor, as well as sites associated with the National Estuarine Research Reserve (NERR) System will be deployed year-round, weather permitting. Site location will be adjusted in 2011 to relocate sites where the three-year assessment is complete. Sites are located in shallow water habitats to provide spatial diversity within the segment. Where applicable, continuous monitoring sites will be used as calibration sites for water quality mapping cruises. Each continuous monitoring site will be serviced on a bi-weekly basis unless water quality readings demonstrate that weekly intervals are required. Results since 2003 indicate that the YSI™ 6600 EDS (Extended Deployment Systems) or V2 model sondes can be deployed for two-week periods throughout most of the annual sampling period without compromising data integrity.

During each site visit, instruments in the water will be checked against the replacement instrument, as

well as another Hydrolab™ or YSI™ instrument to provide a third comparison. A discrete water sample will be collected for chlorophyll and turbidity (using TSS) calibration during each site visit. At six sites, a full suite of nutrient samples (Table 9), including volatile suspended solids (VSS) and particulate inorganic phosphorus (PIP), will also be collected. The same protocols and naming conventions outlined in the Chesapeake Bay Mainstem 117(e) grant and the approved Quality Assurance Project Plan (QAPP) for the Maryland Department of Natural Resources Chesapeake Bay Water Quality Monitoring Program - Chemical and Physical Properties Component will be observed. An additional five sites associated with the NERR System will have a sub-set of nutrients and chlorophyll collected (VSS, NH₄, PO₄, NO₂, TN, TP).

A light reading and Secchi depth reading will also be collected. Light readings will be measured using LI-COR™ equipment, comprised of a deck reference sensor and a LI-COR™ flat sensor. Simultaneous deck and submersed measurements will be recorded to assess the variability in incident surface irradiance due to changing atmospheric conditions. A detailed description of light measurements is included in Appendix 4.

The replacement instrument will then be left at the site for approximately two weeks (see above). The instrument that was at the site for the previous weeks will be delivered to the field office for data download, post-calibration, cleaning and servicing. Detailed instrument calibration procedures are included in Appendix 5.

WATER QUALITY MAPPING

Water quality mapping (DataFlow) is a system, deployed in a small boat, of geospatial equipment and water quality probes that measure water quality parameters from a flow-through stream of water collected near the water's surface. This system allows data to be collected rapidly (approximately every four seconds) while the boat is traveling at speeds of up to 25 knots. Since the system is compact enough to deploy from a small boat, it allows sampling in shallow water and the ability to map an entire small tributary in less than one day. Water is pumped through a ram (pipe), through the sensors, and then discharged overboard. Sensors are deployed on a YSI 6600 Sonde with a flow-through chamber. A Garmin model GPSMAP168 sounder chart plotting receiver and depth-finder global positioning system (GPS) is also part of the system. Each water quality measurement is associated with a date, time, water depth, and GPS coordinate (NAD83) reported to six decimal places. A preliminary 2010 survey schedule is presented in Table 2. The six water quality parameters measured are: water temperature, salinity, dissolved oxygen, pH, turbidity (NTU), and fluorescence (used to estimate chlorophyll *a*). All parameters will follow the same naming conventions as outlined in the existing Chesapeake Bay Mainstem 117(e) grant and approved Water Quality Project Plan.

Water quality mapping uses the same YSI 6600 instrument package as the continuous monitoring program. Detailed instrument calibration procedures for the instrument are included in Appendix 6. Each tributary system will be monitored once a month (Figure 1, Table 2), April through October.

During each water quality mapping cruise, between five and six calibration samples will be collected for use in the development of regressions for chlorophyll, turbidity, total suspended solids, and light attenuation. Sample collection stations are listed in Table 4. Samples for total suspended solids and chlorophyll for instrument calibration, as well as a light reading and Secchi depth reading, will also be collected at each calibration station. Light readings will be measured using LI-COR equipment, comprised of a deck reference sensor and a LI-COR flat sensor. Simultaneous deck and submersed measurements will be recorded to assess the variability in incident surface irradiance due to changing atmospheric conditions. A detailed description of light measurements is included in Appendix 4.

Table 1. Shallow-water monitoring for 2010: Bay segment, sample type(s) and Designated Uses (DU) for which the collected data will be used to assess water quality criteria.

Tributary	Segment Name	Sample Type(s)	Shallow Water DU			Open Water DU			Spawning/ Nursery DU			Deep Water DU		
			Chl a	Kd	D.O.	Chl a	Kd	D.O.	Chl a	Kd	D.O.	Chl a	Kd	D.O.
			Sassafras R.	SASOH	Cont. Monit.	YES	YES	YES	YES	NA	YES	YES	YES	YES
Chesapeake Bay	CB3MH	Cont. Monit.	YES	YES	YES	YES	NA	YES	*	*	*	NA	NA	YES
		Water Quality Mapping												
	CB1TF	Cont. Monit.	YES	YES	YES	YES	NA	YES	YES	YES	YES	*	*	*
	CB4MH ¹	Cont. Monit.	YES	YES	YES	YES	NA	YES	*	*	*	NA	NA	YES
Bush R.	BSHOH	Cont. Monit.	NO	NO	NO	NO	NA	NO	NO	NO	NO	*	*	*
Patapsco R.	PATMH	Cont. Monit.	YES	YES	YES	YES	NA	YES	YES	YES	YES	NA	NA	NO
		Water Quality Mapping												
Patuxent R.	PAXTF	Cont. Monit.	NO	NO	NO	NO	NA	NO	NO	NO	NO	*	*	*
	WBRTF	Cont. Monit.	NO	NO	NO	NO	NA	NO	NO	NO	NO	*	*	*
Rhode R.	RHDMH	Cont. Monit.	NO	NO	NO	NO	NA	NO	NO	NO	NO	*	*	*
Wicomico	WICMH	Cont. Monit.	NO	NO	NO	NO	NA	NO	NO	NO	NO	*	*	*
Potomac R.	POTMH	Cont. Monit.	NO	NO	NO	NO	NA	NO	*	*	*	NA	NA	NO
	MATTF	Cont. Monit.	NO	NO	NO	NO	NA	NO	NO	NO	NO	*	*	*
Honga R.	HNGMH	Cont. Monit.	YES	YES	YES	YES	NA	YES	*	*	*	*	*	*
		Water Quality Mapping												
Corsica R.	CHSMH	Cont. Monit.	YES	YES	YES	YES	NA	YES	NO	NO	NO	*	*	*
		Water Quality Mapping												

YES: Data from this project are expected to be used to assess these criteria

NO: Data from this project cannot be used to assess these criteria.

NA: Criteria does not apply to this Designated Use category.

*: This segment does not contain this Designated Use

¹ CB4MH also has Deep Channel DU for D.O.

Table 2. Water Quality Mapping Cruise Schedule (April through October 2010).

River System	April	May	June	July	Aug	Sept	Oct
Patapsco	5	3	1	1	2	1	4
Honga	1	18	7	19	10	7	6
Northern Chesapeake (CB3MH)	6	4	2	6	3	2	5
Corsica	1	18	7	19	10	7	6

The dates defined within this scope of work are for implementation of the shallow water monitoring for calendar year 2010 and reflect work to be funded and completed within the budget period of July 1, 2010 - June 30, 2011.

DNR will provide matching funds and will solicit other funding sources to expand shallow water monitoring capabilities. DNR will also provide staff, equipment and other resources to enhance shallow water monitoring with its partners and will coordinate with existing long-term water quality monitoring programs to ensure better understanding of estuarine processes.

1.2 Objectives and Problem Definition

The objectives of the Shallow Water Monitoring Program are to 1) assess the Chesapeake Bay water quality criteria for dissolved oxygen, water clarity and chlorophyll in shallow and open water habitats, 2) determine attainment or non-attainment of shallow water and open water habitats for their designated uses, 3) provide spatially and temporally intensive data in shallow water habitats to improve water quality mapping using interpolation, 4) assess SAV habitats and identify potential SAV restoration sites, 5) provide information to better understand ecosystem processes and the impact of extreme events (e.g. hurricanes, high flows) in shallow water and open water environments, and 6) provide information for calibrating water quality models.

As objectives are achieved, they will provide the basis for management decisions. For example, if the monitoring results determine that a water body is out of attainment, the water body will be listed in the 305(b) report to the U.S. Environmental Protection Agency. If the causes of non-attainment are determined to be anthropogenic, the water body will be placed on the 303(d) list requiring a TMDL (total maximum daily load). Another example is the identification of potential SAV restoration sites. Shallow water monitoring data will be used by the SAV restoration strategy project to help select or eliminate sites from consideration for SAV restoration projects.

Spatially intensive water quality mapping provides information on variability and patchiness that is invaluable in establishing water quality criteria, and in determining attainment of those criteria. For example, spatial information on turbidity can be correlated to the spatial coverage of living resources such as bay grasses (SAV). This information can be used to determine and assess water clarity criteria necessary to support SAV growth, address the progress of meeting ambitious SAV restoration goals, and target specific areas for successful SAV restoration. Spatially intensive data can also help pinpoint localized areas of water quality concern, such as areas of low dissolved oxygen that can cause fish kills, and their possible links to nearby land uses or point sources. Spatial data can also be aggregated across watershed units to aid in the evaluation of entire systems.

Temporally intensive (continuous) monitoring provides information on the temporal variability of water quality. Continuous monitoring captures events that occur on short time scales (hours to days) or during

times when it is impractical to deploy field crews. Continuous monitoring can capture early morning lows in dissolved oxygen as well as daytime and nighttime values of water quality parameters to provide scientists with the information necessary to fully assess instantaneous water quality criteria in shallow water habitats. Continuous monitoring provides early warning of potential harmful algal blooms and low-dissolved oxygen related fish kills, allowing managers to coordinate appropriate supplemental sampling (e.g., plankton sampling). Continuous monitoring is instrumental in documenting the water quality impacts of episodic storm events.

1.3 Sampling Design

1.3.1 Parameters

Parameters measured *in situ* include turbidity, specific conductance (to calculate salinity), water temperature, dissolved oxygen, fluorescence and total chlorophyll (to estimate chlorophyll *a*), pH and depth (see Appendices 9 and 10). *In situ* turbidity and chlorophyll fluorescence measurements are surrogates for K_d (light attenuation coefficient) and chlorophyll *a*; therefore, discrete measurements of photosynthetic active radiation (PAR) and chlorophyll *a* are needed to establish regression models that relate *in situ* turbidity and chlorophyll fluorescence to K_d and chlorophyll *a*. In addition, blue green algal concentration (cells/ml) and Relative Fluorescence Units (RFUs) will be measured at select sites.

Grab samples that are filtered on site are collected at water quality mapping calibration stations and at continuous monitoring stations. Processed samples will be taken and sent to the Chesapeake Biological Laboratory's Nutrient Analytical Services Laboratory for analysis. Samples from six Continuous Monitoring sites will be analyzed for the same suite of nutrients as those measured for the Chesapeake Bay Mainstem Program (chlorophyll *a*, pheophytin, total dissolved nitrogen, particulate nitrogen, nitrite, nitrite + nitrate, ammonium, total dissolved phosphorus, particulate phosphorus, orthophosphate, particulate carbon, total suspended solids and volatile suspended solids) plus particulate inorganic phosphorus. Samples from an additional five Continuous Monitoring sites associated with the NERR System will be analyzed for a sub-set of nutrients (VSS, NH₄, PO₄, NO₃, TN, TP) and chlorophyll. In addition, Secchi depth and photosynthetic active radiation (PAR) measurements were taken at calibration stations to calculate light attenuation (K_d). See Appendix 4 for details of the procedure for calculating light attenuation. See next section (Methods and Performance Measures) for a list of all parameters and the methods associated with them.

1.3.2 Spatial and Temporal Aspects

Maryland DNR is responsible for conducting shallow water monitoring in 50 Chesapeake Bay Program segments. Each segment will be assessed for a three-year period. Available resources will dictate the number and locations of segments assessed. These segments will be prioritized considering the following factors:

- Need for making listing or delisting decisions
- Potential importance as restoration site for living resources (e.g., oysters, SAV)
- Importance as living resource habitat
- Modeling needs
- Availability of partners to share costs and labor
- Logistics and efficiency considerations
- Geographic, size, and habitat type representation/equitability considerations
- Determine effect of major management action (before/after)

Continuous monitoring instruments will be deployed at predetermined sites in Maryland's tidal tributaries. Continuous monitoring sampling sites are chosen to be representative of a tidal tributary's

upstream and downstream conditions. Continuous monitoring sampling sites primarily utilize existing structures for instrument mounting (e.g., piers and pilings), so the location of such structures is taken into consideration when choosing sites. Additionally, areas of SAV restoration are also taken into consideration when choosing continuous monitoring sampling sites. Sampling sites for the 2010 season are depicted on the map in Figure 1.

Eleven Chesapeake Bay tributary segments and three Chesapeake Bay mainstem segments have been identified for shallow water monitoring in Maryland in 2010, ranging from small systems to large systems with spatial coverage throughout Maryland (some systems have Continuous Monitors only):

- Bush River (Eighth year of assessments for this small system on the Upper Western Shore)
 - Stations located at Otter Point Creek (NERRS Site) and Church Point (supported by Harford County).
- Chesapeake Bay – CB1TF (Fourth year of assessments for this large bay segment)
 - Station located in the Susquehanna Flats; no Water Quality Mapping this year.
- Chesapeake Bay – CB3MH (Seventh year of assessments for this large bay segment)
 - Stations located at Down’s Park, Fort Howard, Gratitude Marina, Love Point, and Sandy Point South Beach plus a water quality profiler deployed north of the Bay bridge; second year of Water Quality Mapping.
- Chesapeake Bay – CB4MH (First year of assessment for this large bay segment)
 - Station located at Gooses Reef.
- Corsica River (Sixth year of assessments for this small-sized system on the Upper Eastern Shore)
 - Stations located at Sycamore Point and off-shore on pilings at Possum Point and the Sill; sixth year of Water Quality Mapping.
- Honga River (Third year of assessments for this small system on the Lower Eastern Shore)
 - Stations located at House Point and Muddy Hook Cove; third year of Water Quality Mapping.
- Patapsco River (Eleventh year of assessments for this large system on the Upper Western Shore)
 - Stations located at Fort Armistead, Fort McHenry, Fort Smallwood and Masonville Cove; second year of Water Quality Mapping.
- Patuxent River (Eighth year of assessments for this large system in the Patuxent River Basin)
 - Stations located at Mataponi Creek (NERRS Site), Jug Bay (NERRS Site) and Iron Pot Landing (NERRS Site).
- Potomac River (Seventh year of assessments in the Potomac River Basin)
 - Stations located at St Georges Creek (St. Mary’s), St. Mary’s College, Mattawoman Creek, and the town of Indian Head. (Additional sites in Virginia maintained by Virginia DEQ, VIMS, and George Mason University).
- Sassafras River (Fifth year of assessments for this small system on the Upper Eastern Shore)
 - Stations located at Betterton Beach and Budds Landing; no Water quality Mapping this year.
- Susquehanna River (Fourth year of assessments for this large system.)
 - Station located at Havre de Grace; no Water Quality Mapping this year.
- Rhode River (Seventh year of assessments for this small system on the Lower Western Shore)
 - Station located at Smithsonian Environmental Research Center.
- Wicomico River/Monie Bay (Fifth year of assessments for this mid-sized system on the Lower Eastern Shore)
 - Station located at Little Monie Creek.

Latitude and longitude values of continuous monitoring and water quality mapping calibration site locations for 2010 are provided in Tables 3 and 4. Detailed location data collected by GPS on water quality mapping cruises will be associated with each data point measured during the cruise and submitted to the Bay Program as part of routine data submissions.

Table 3. 2010 Continuous monitoring stations.

Tributary	Segment	Station Name	Station	Years deployed	LAT (NAD83)	LONG (NAD83)
Bush River	BSHOH	Church Point	XJG7461	2008 – present	39° 27.492' N	76° 13.936' W
		Otter Point Creek	XJG7035	2003 – present	39° 27.047' N	76° 16.474' W
Chesapeake Bay	CB1TF	Susquehanna Flats	XKH0375	2007 – present	39° 30.318' N	76° 02.486' W
		Havre de Grace	XKH2949	2007 – present	39° 32.867' N	76° 2.486' W
	CB3MH	Sandy Pt. - South Beach	XHF0460	2004 – present	39° 00.450' N	76° 24.020' W
		Gratitude Marina	XHG8442	2009 - present	39° 09.764' N	76° 15.777' W
		Down's Park	XHF6841	2009 - present	39° 0 7.010' N	76° 25.930' W
		Love Point	XHG2318	2009 - present	39° 02.363' N	76° 18.228' W
	CB4MH	Ft. Howard	XIF1735	2009 - present	39° 11.718' N	76° 26.526' W
		Profiler – Bay Bridge	*	2010	39° 0.351' N	76° 21.263 W
		Profiler – Bottom – Bay Bridge	*	2010	39° 0.351' N	76° 21.263 W
		Gooses Reef - Surface	*	2010	*	*
		Gooses Reef - Bottom	*	2010	*	*
Corsica River	CHSMH	Possum Point - Bottom	XHH4931	2006 – present	39° 04.872' N	76° 06.894' W
		Possum Point - Surface	XHH4931	2006 – present	39° 04.872' N	76° 06.894' W
	Sycamore Pt.	XHH3851	2005 – present	39° 03.770' N	76° 04.897' W	
	The Sill - Bottom	XHH4916	2006 – present	39° 04.908' N	76° 08.352' W	
	The Sill - Surface	XHH4916	2006 – present	39° 04.908' N	76° 08.352' W	
Honga River	HNGMH	Muddy Hook Cove	XCG5495	2008 – present	38° 15.409' N	76° 10.439' W
		House Point	XCG9168	2008 – present	38° 19.144' N	76° 13.173' W
Patapsco River	PATMH	Ft. Armistead	XIE2581	2009 - present	39° 12.511' N	76° 31.929' W
		Ft. McHenry	XIE5748	2000 – present	39° 15.678' N	76° 35.178' W
		Ft. Smallwood	XHF9808	2009 - present	39° 09.762' N	76° 29.248' W
		Masonville Cove	XIE4741	2009 - present	39° 14.664' N	76° 35.742' W
Patuxent River	PAXTF	Jug Bay	PXT0455	2003 – present	38° 46.877' N	76° 42.822' W
		Mataponi	MTI0015	2003 – present	38° 44.599' N	76° 42.446' W
	WBRTF	Iron Pot Landing	WXT0013	2003 – present	38° 47.760' N	76° 43.248' W
Potomac	POTMH	St. George's Creek	XBF7904	2006 – present	38° 07.866' N	76° 29.604' W
		St. Mary's River - SMCM	XCF1440	2006 – present	38° 11.358' N	76° 26.034' W
	MATTF	Mattawoman Creek	XEA3687	2006 – present	38° 44.599' N	76° 42.446' W
Sassafras River	SASOH	Indian Head (Upper Mattawoman Creek)	XEB5404	2009 - present	38° 35.410' N	77° 9.638' W
		Budds Landing	XJI2396	2007 – present	39° 22.335' N	76° 50.392' W
		Betterton Beach	XJH2362	2006 – present	39° 22.302' N	76° 03.751' W
Rhode River	RHDMH	Rhode River - SERC	XGE3275	2004 – present	38° 53.157' N	76° 32.490' W
Wicomico River	WICMH	Monie Bay	LMN0028	2006 – present	38° 12.513' N	76° 48.276' W

* Pending

Table 4. 2010 Water quality mapping calibration stations.

StationName	WaterBody	Latitude	Longitude	ConMon Station
COR0056	Corsica River	38.0558	-76.0718	
XHH3851	Corsica River	39.0628	-76.0816	YES
XHH4528	Corsica River	39.0749	-76.1198	
XHH4916	Corsica River	39.0818	-76.1392	YES
XHH4931	Corsica River	39.0812	-76.1149	YES
XHG2318	East CB3MH	39.0779	-76.2416	YES
XHG4755	East CB3MH	39.0779	-76.2416	
XHG5819	East CB3MH	39.0970	-76.3073	
XHG8442	East CB3MH	39.1405	-76.2630	YES
XIG2224	East CB3MH	39.2037	76.2932	
XDG1188	Honga River	38.3523	-76.1862	
XCH7507	Honga River	38.2903	-76.1548	
XCH6533	Honga River	38.2746	-76.1114	
XCG5495	Honga River	38.2565	-76.1743	YES
XCG9168	Honga River	38.3191	-76.2196	YES
XIF4705	Lower Patapsco	39.2445	-76.4909	
XIF2929	Lower Patapsco	39.2144	-76.4516	
XHF9808	Lower Patapsco	39.1627	-76.4875	YES
XIE2581	Lower Patapsco	39.2085	-76.5322	YES
WT5.1	Lower Patapsco	39.2131	-76.5225	
XIE4741	Upper Patapsco	39.2453	-76.5978	YES
CUR0007	Upper Patapsco	39.2076	-76.5798	
XIE4876	Upper Patapsco	39.2461	-76.5396	
XIE6747	Upper Patapsco	39.2771	-76.5892	
XIE5748	Upper Patapsco	39.2613	-76.5863	YES
XHF0460	West CB3MH	39.0075	-76.4003	YES
XHF6841	West CB3MH	39.1129	-76.4322	YES
XIF1735	West CB3MH	39.1953	-76.4421	YES
XIF0591	West CB3MH	39.1757	-76.3475	
XHF2584	West CB3MH	39.0407	-76.3600	

Multiple surveys are required to map larger water bodies. Mapping data acquired during two Patapsco River surveys will be combined. Two surveys will also be combined when the Eastern and Western portions of the Chesapeake Bay segment CB3MH are mapped.

Maryland DNR staff will be responsible for maintaining all continuous monitoring sites except for two sites. The St. Mary's College site will be managed by the St. Mary's College River Project (SMCRP) and the Rhode River site will be managed by the Smithsonian Environmental Research Center. Also, the Baltimore Harbor site will be managed by the National Aquarium in Baltimore during winter months (November – March.) Maryland DNR will conduct all water quality mapping cruises.

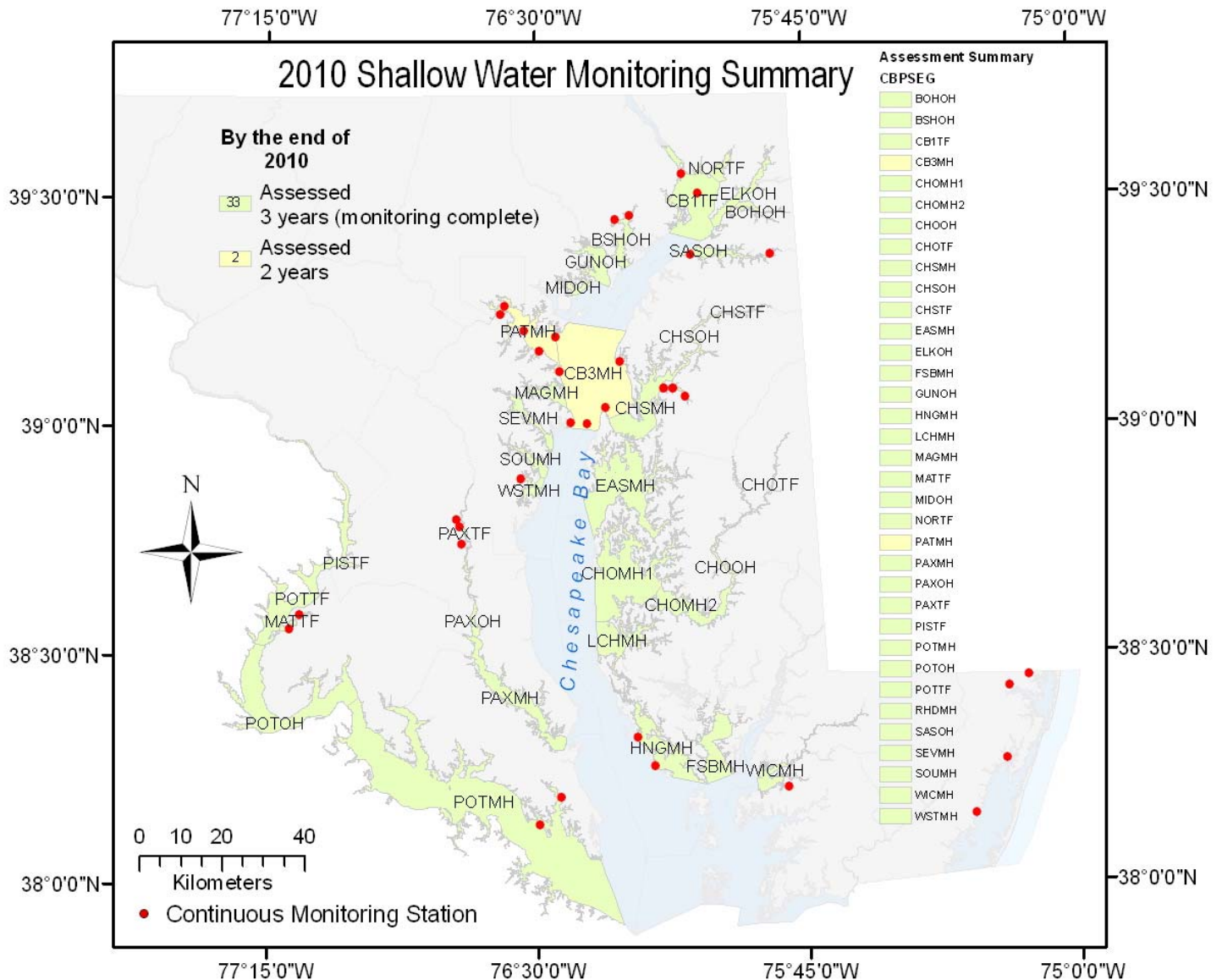


Figure 1. Map of 2010 continuous monitoring stations and water quality mapping systems, with progress of assessment. This map includes monitoring sites in the Coastal Bays, which are not discussed in this QAPP.

2. METHODS AND PERFORMANCE MEASURES

The Chesapeake Bay Shallow Water Quality Monitoring Program measures a number of physical and chemical parameters that are indicative of the Bay's eutrophication problem.

Several "natural" properties such as salinity and temperature in the water column provide important information for interpretation of water quality indicators. For example, water clarity criteria differ based on salinity regime.

Tables 5 and 6 summarize Quality Control checks utilized in the Shallow Water Monitoring Program.

Tables 7 (Continuous Monitoring) and 8 (Water Quality Mapping) list parameters measured *in situ* along with resolution, range, accuracy and equipment used.

Table 9 lists the parameters measured in the laboratory (from grab samples taken at calibration stations), their detection limits, methods references, and holding times and conditions.

Table 5: *In situ* monitor performance checks and acceptance criteria.

	Performance Checks	Acceptance Criteria
Precision	Comparison of readings from deployed sonde against new sonde and discrete sonde when switching.	See Table 10
Bias	Post-deployment calibration Fluorescence color blank	See Table 10
Accuracy	Pre-deployment calibration	
Representativeness	Daily checks of real-time data. Auto-notification of problems. Visual inspection to reject spikes	
Comparability	Use identical YSI equipment at all sites.	
Completeness	Data verification checks	Percentage of accepted data values.
Sensitivity	Manufacturer's specifications for each probe type.	See Appendix 1

Table 6: Discrete sample performance checks and acceptance criteria.

	Performance Checks	Acceptance Criteria
Precision	Intra-lab: replicate 1/10 samples. Inter-lab: quarterly Chesapeake Bay split samples.	Replicate control limits (For each parameter)
Bias and Accuracy	Analyze SRMs with each run. Spike 1/20 samples. Semi-annual blind audit sample. Semi-annual USGS ref. samples. Field blanks for nutrient samples.	% Recover of SRM % Recovery of Spikes ± 3 std. dev. of mean ± 3 pseudo- σ of mean
Comparability	Use standard procedures for collecting and analyzing samples.	
Completeness	Number of reported values vs. number of samples submitted for analysis.	
Sensitivity	MDL calculated for each parameter according to 40 CFR, Part 136B.	See Table 9

Table 7. Continuous monitoring *in situ* water column parameters.

Parameter (Units)	Resolution	Range	Accuracy	Equipment
Specific Conductance (mS/cm=mmhos/cm)	0.001 to 0.1 mS/cm (range-dependent)	0 to 100 mS/cm	0.5% of reading + 0.001 mS/cm	YSI 6600 6560 probe
Dissolved Oxygen (mg/L)	0.01 mg/L	0 to 50 mg/L	0 to 20 mg/L: 2% of reading or 0.2 mg/L, whichever is greater; 20 to 50 mg/L: 6% of reading	YSI 6600 6562 probe+
Dissolved Oxygen (% saturation)	0 to 500 %	0 to 500 %	0 to 200%: 2% of reading or 2% air saturation, whichever is greater; 200 to 500%: 6% of reading	YSI 6600 6562 probe+
Dissolved Oxygen (mg/L)	0.01 mg/L	0 to 50 mg/L	0 to 20 mg/L: 1% of reading or 0.1 mg/L, whichever is greater; 20 to 50 mg/L: 15% of reading	YSI 6600 6150 ROX probe+
Dissolved Oxygen (% saturation)	0 to 500 %	0 to 500 %	0 to 200%: 1% of reading or 1% air saturation, whichever is greater; 200 to 500%: 15% of reading	YSI 6600 6150 ROX probe+
Fluorescence	0.1%FS	0 to 400 µg/L Chl; 0 to 100% FS	NA	YSI 6600 6025 probe
Total Chlorophyll	0.1 µg/L Chl	EM 470 nm; EX 650 - 700 nm; 0 - 400 µg/l	NA	YSI 6600 6025 probe
Photosynthetic Active Radiation (PAR)	See Appendix 4	See Appendix 4	See Appendix 4	LI-192SA and LI-190SA
pH (pH units)	0.01units	0 to 14 units	0.2 units	YSI 6600 probes used: 6561, 6561FG and 6579 (hemispherical) all have the same parameters
Salinity (ppt)	0.01 ppt	0 to 70 ppt	1% of reading or 0.1 ppt, whichever is greater	YSI 6600 6560 probe
Secchi depth (m)	NA	0.1 m (lower limit)	NA	Secchi disk (20 cm or 25.2 cm)
Turbidity (NTU)	0.1 NTU	0 to 1000 NTU	5% of reading or 2 NTU, whichever is greater	YSI 6600 6136 probe*
Water Temperature (°C)	0.01°C	-5 to 45 °C	0.15 °C	YSI 6600 6560 probe
Depth (shallow sensor)	0.001 m	0 – 9.1 m	0.018 m	NA [^]
Depth (medium sensor)	0.001 m	0 – 61 m	0.12 m	NA [^]
Blue Green Algae PE	1cell/mL or 0.01 RFU**	~ 0 - 200,000 cell/mL or 0 - 100 RFU**	~ 450 cells/mL	6132 (Marine and Estuarine waters)
Blue Green Algae PC	1cell/mL or 0.01 RFU**	~ 0 - 280,000 cell/mL or 0 - 100 RFU**	~ 220 cells/mL	6131 (Fresh and Estuarine waters)

+ Beginning in 2007, some instruments were equipped with 6150 ROX optical dissolved oxygen probes.

* Between 1998 and 2004 the older model 6026 turbidity probe was in use in some instruments. Beginning in 2005, the 6136 turbidity probe was used exclusively.

[^] The depth sensor is built into the YSI6600 instrument, and does not have an individual probe model number. Some instruments in the DNR inventory do not have depth sensors.

** RFU - Relative Fluorescence Units. During 2010 sondes with Blue Green Algal PE probes will be deployed at Ft. McHenry and Sycamore Point. A Blue Green Algal PC probe equipped sonde will be deployed at Mattawoman.

Table 8. Water Quality Mapping *in situ* water column parameters.

Parameter (Units)	Resolution	Range	Accuracy	Equipment
Specific Conductance (mS/cm=mmhos/cm)	0.001 to 0.1 mS/cm (range-dependent)	0 to 100 mS/cm	0.5% of reading + 0.001 mS/cm	YSI 6600 6560 probe
Dissolved Oxygen (mg/L)	0.01 mg/L	0 to 50 mg/L	0 to 20 mg/L; 2% of reading or 0.2 mg/L, whichever is greater; 20 to 50 mg/L; 6% of reading	YSI 6600 6562 probe
Dissolved Oxygen (% saturation)	0 to 500 %	0 to 500 %	0 to 200%; 2% of reading or 2% air saturation, whichever is greater; 200 to 500%; 6% of reading	YSI 6600 6562 probe
Dissolved Oxygen (% saturation)	0 to 500 %	0 to 500 %	0 to 200%; 1% of reading or 1% air saturation, whichever is greater; 200 to 500%; 15% of reading	YSI 6600 6150 ROX probe+
Fluorescence	0.1%FS	0 to 400 µg/L Chl; 0 to 100% FS	NA	YSI 6600 6025 probe
Fluorescence	0.1%FS	0 to 400 µg/L Chl; 0 to 100% FS	NA	YSI 6600 6025 probe
Total Chlorophyll	0.1 µg/L Chl	EM 470 nm; EX 650 - 700 nm; 0 - 400 µg/l	NA	YSI 6600 6025 probe
Photosynthetic Active Radiation (PAR)	See Appendix 4	See Appendix 4	See Appendix 4	LI-192SA and LI-190SA
pH (pH units)	0.01units	0 to 14 units	0.2 units	YSI 6600 6561 probe
Salinity (ppt)	0.01 ppt	0 to 70 ppt	1% of reading or 0.1 ppt, whichever is greater	YSI 6600 6560 probe
Secchi depth (m)	NA	0.1 m (lower limit)	NA	Secchi disk (20 cm or 25.2 cm)
Turbidity (NTU)	0.1 NTU	0 to 1000 NTU	5% of reading or 2 NTU, whichever is greater	YSI 6600 6136 probe*
Water Temperature (°C)	0.01°C	-5 to 45 °C	0.15 °C	YSI 6600 6560 probe
Depth	0.001 m	0 - 9 m	0.02 m	Garmin GPSmap 168 sounder
Position	15 m	NA	5 m	Garmin GPSmap 168 sounder
Blue Green Algae PE	1cell/mL or 0.01 RFU**	~ 0 - 200,000 cell/mL or 0 - 100 RFU**	~ 450 cells/mL	6132 (Marine and Estuarine waters)

+ In 2010, all water quality mapping surveys will be conducted using sondes equipped with 6150 ROX optical dissolved oxygen probes instead of the 6562 probes.

* Between 1998 and 2004 the older model 6026 turbidity probe was in use in some instruments. Beginning in 2005, the 6136 turbidity probe was used exclusively.

** RFU - Relative Fluorescence Units. During 2010, a sonde with a Blue Green Algal PE probe will be deployed during Upper Patapsco Surveys.

Sources For Tables 7 and 8:

YSI Incorporated. 2006. YSI 6-Series Manual, Revision D. Available online at: <http://www.ysi.com/>
GARMIN 2009 GPSMAP® 168 Sounder. Available at <http://www.garmin.com/garmin/cms/site/us/>

Table 9. Shallow Water Monitoring Program Grab Sample Water Column Parameters, Detection Limits, Methods, References, and Holding Times and Conditions.

Parameter (Units)	Detection Limit (or Range)	Method Reference	Holding Time and Condition
Orthophosphate (mg/L as P)	0.0006 mg/L	EPA method 365.1 (EPA 1993) Aquakem 250	Freezing-28 d
Total Diss. Phosphorus (mg/L as P)	0.0015 mg/L	Aquakem 250 and AutoAnalyzer II; Valderrama 1981, Alkaline persulfate digestion	Freezing-28 d
Particulate Phosphorus (mg/L as P)	0.0021 mg/L	Aspila et al. (1976) Aquakem 250	Freezing-28 d
Nitrite (mg/L as N)	0.0006 mg/L	EPA method 353.2 (EPA 1979) Aquakem 250	Freezing-28 d
Nitrite + Nitrate (mg/L as N)	0.0007 mg/L	EPA method 353.2 (EPA 1993) and enzymatic nitrate method. Aquakem 250	Freezing-28 d
Ammonium (mg/L as N)	0.006 mg/L	EPA method 350.1 (EPA 1993) Aquakem 250	Freezing-28 d
Total Dissolved Nitrogen (mg/L as N)	0.05 mg/L	Aquakem 250 and AutoAnalyzer II; D'Elia et al. (1977) Valderrama (1981), Alkaline persulfate digestion	Freezing-28 d
Dissolved Organic Carbon (mg/L as C)	0.24 mg/L	Sugimura and Suzuki (1988)	Freezing-28 d
Particulate Nitrogen (mg/L as N)	0.0105 mg/L	EPA method 440.0 (EPA 1997)	Freezing-28 d
Particulate Carbon (mg/L as C)	0.0633 mg/L	EPA method 440.0 (EPA 1997)	Freezing-28 d
Total Suspended Solids (mg/L)	2.4 mg/L	Standard Method (APHA 19th or 20th edition) Method 2540 D	Freezing-28 d
Volatile Suspended Solids (mg/L)	0.9 mg/L	Standard Method (APHA 19th or 20th edition) Method 2540 D	Freezing-28 d
Chlorophyll a (µg/L)	0.62 µg/L	Standard Methods 10200H, 21st Ed.	Freezing-28 d
Pheophytin a (µg/L)	0.74 µg/L	Standard Methods 10200H, 21st Ed.	Freezing-28 d

References For Table 9:

American Public Health Association (APHA), *Standard Methods for the Examination of Water and Wastewater, Method Number 10200H*, 21st Edition, 2005.

American Public Health Association (APHA), *Standard Methods for the Examination of Water and Wastewater, Method Number 2540 D*, 20th Edition, 1998.

American Public Health Association (APHA). 1975. Method 208D, total non-filterable residue dried at 103-105°C (total suspended matter), in *Standard Methods for the Examination of Water and Wastewater*, 14th Edition. APHA: Washington, D.C. 1193 p.

Aspila, I., H. Agemian and A. S. Y. Chau. 1976. A semi-automated method for the determination of inorganic, organic and total phosphate in sediments. *Analyst* 101:187-197.

D'Elia, C. F., P. A. Steudler and N. Corwin. 1977. Determination of total nitrogen in aqueous samples using

persulfate digestion. *Limnol. Oceanogr.* 22:760-764.

Hydrolab System Water Quality Instrumentation Manual (HSWQIM). 1984-1998 (multiple editions). Published by Hydrolab Corporation, P.O. Box 50116, Austin, Texas.

Parsons, T.R., Takahashi, M. and B. Hargrave. 1977. *Biological Oceanographic Processes*. Pergammon Press. Oxford. 332 p. (pages 71-85).

Patton, C.J., A.E. Fischer, W.H. Campbell and E.R. Campbell. 2002. Corn leaf nitrate reductase- A nontoxic alternative to cadmium for photometric nitrate determinations in water samples by air-segmented continuous-flow analysis. *Env Sci. and Technology* 36(4):729-735

Smith, R. C. 1969. An underwater spectral irradiance collector. *J. Mar. Res.* Vol. 27: 341-351.

Sugimura, Y. and Y. Suzuki. 1988. A high temperature catalytic oxidation method for the determination of non-volatile dissolved organic carbon in seawater by direct injection of a liquid sample. *Mar. Chem.* 24:105 - 131.

US Environmental Protection Agency (EPA). 1997. *US EPA Method 440.0. Determination of Carbon and Nitrogen in Sediments and Particulates of Estuarine/Coastal Waters Using Elemental Analysis*. Revision 1.4. National Exposure Research Laboratory, Office of Research and Development, US Environmental Protection Agency: Cincinnati, OH.

US Environmental Protection Agency (EPA). 1993. *Methods for the Determination of Inorganic Substances in Environmental Samples* EPA-600/R-93/100.

US Environmental Protection Agency (EPA). 1979. *Methods for Chemical Analysis of Water and Wastes*. EPA-600/4-79-020. 460 p.

Valderrama, J. C. 1981. The simultaneous analysis of total nitrogen and total phosphorus in natural waters. *Mar. Chem.* 10:109-122.

Welch, P.S. 1948. Chapter 11 in *Limnological Methods*. Blakiston: Philadelphia, PA. pp. 159-167.

3. FIELD MEASUREMENTS AND SAMPLING

3.1. Continuous Monitoring

Each continuous monitoring station is equipped with a YSI 6600 sonde. Beginning in 2004, all YSI 6600 data sondes were equipped with Extended Deployment Systems (EDS). The EDS has a wiper system that allows the continuous monitoring sondes to be deployed for longer periods of time without suffering a degradation of data quality as a result of biofouling. Starting in 2007, some instruments were converted from EDS to the new V2 model, which supports four optical ports. In addition to chlorophyll fluorescence and turbidity, the additional two optical ports may be configured for 6150 optical dissolved oxygen and blue green algal probes. Each continuous monitoring sonde records nine water quality parameters every 15 minutes. The nine water quality parameters measured continuously are water temperature, specific conductance, salinity, dissolved oxygen, turbidity (NTU), fluorescence and total chlorophyll (used to estimate chlorophyll *a*), pH and depth. During 2010, in addition to the nine parameters, sondes at three sites (Mattawoman, Fort McHenry and Sycamore Point) will be used to measure Blue Green Algal cells/ml and Relative Fluorescence Units (RFUs). In 2010 all DNR stations will utilize V2 technology. The station monitored by St. Mary's College will continue to use EDS technology.

Since 2008, sonde sensors have been wrapped in copper tape (2" diameter; 3.5 mm thickness) to inhibit biological growth. Starting in 2010, several sondes will also be equipped with new anti-fouling probes that utilize copper housings. Continuous monitoring sondes are positioned in the water column in either a floating configuration that suspends the sonde at some distance below the surface (usually 1-meter), or in an anchored configuration that fixes the sonde at some distance above the bottom. The sonde is positioned in the water column in either a floating configuration or a fixed configuration depending on the geographic area being monitored, the monitoring goals for that segment, and the total water depth at a particular site.

Continuous monitoring sondes in a floating configuration are suspended from a float inside of a 4-inch diameter PVC pipe with 2-inch diameter holes drilled every 4 inches below the waterline to allow for water exchange. The sonde tubes are painted below the water line with black antifouling paint (Petit Trinidad™ SR or similar). Sondes in a fixed configuration are also housed inside a perforated 4-inch diameter PVC pipe, and a bolt is used to hold the negatively buoyant sonde at a fixed depth above the sediment bottom. At selected sites, telemetry is used to transmit the data in near real-time to DNR's Eyes on the Bay web site (<http://www.eyesonthebay.net>). The telemetry system is comprised of a field component located at each sampling site and an office component located at the Bay Program offices in Annapolis. The field component consists of either a YSI 6200 logger or a Campbell Scientific CR10X data logger housed in a weather resistant fiberglass-reinforced polyester enclosure. Each unit also contains a battery, solar panel and a digital CDMA modem. Every hour, the computer server located at the Chesapeake Bay Program office contacts the data logger located at each telemetered sampling site via TCP/IP communications and then uploads, archives, and updates the data display on the Eyes on the Bay web site. These data are available immediately on the Internet, allowing the general public to view near real-time water quality data. Details of the steps for installing, calibrating, deploying, and retrieving the YSI instruments are provided in Appendix 2.

In addition to the parameters measured by the sondes, Secchi depth and light attenuation (Appendix 4) are measured bi-weekly from April to October, and grab samples are taken and filtered on-site or immediately after returning to the lab. See Appendix 7 for a description of the filtering procedures. The processed samples are sent to the Nutrient Analytical Services Laboratory (NASL) at the Chesapeake Biological Laboratory for analysis. These results will be used to analyze relationships between the water quality parameters measured by each continuous monitor and nutrient components. Some of the lab data are also used to check the YSI data for accuracy. The following parameters are analyzed at NASL:

ammonium, total dissolved nitrogen, particulate nitrogen, nitrite, nitrite + nitrate, particulate phosphorus, total dissolved phosphorus, orthophosphate, particulate carbon, total suspended solids, volatile suspended solids, particulate inorganic phosphorus, chlorophyll *a* and pheophytin (Appendix 8). Samples from six Continuous Monitoring sites will be analyzed for all of these parameters, while samples from an additional five sites associated with the NERR System will be analyzed for a sub-set of parameters (VSS, NH₄, PO₄, NO₃, TN, TP). Samples from the remaining sites will be analyzed for chlorophyll *a* and TSS only.

3.2 Water Quality Mapping

Water quality mapping is conducted using a system deployed on a small boat. The system is comprised of geospatial equipment and water quality probes that measure water quality parameters from a flow-through stream of water collected near the water's surface. The eight water quality parameters measured are: water temperature, salinity, specific conductance, dissolved oxygen, turbidity (NTU), fluorescence, chlorophyll *a* (estimated from fluorescence) and pH. In addition, cruises in the Upper Patapsco River will be equipped with Blue Green Algal (phycoerythrin) sensors used to measure Blue Green Algal cells/ml and Relative Fluorescence Units (RFUs). Water is pumped through a ram (pipe), across the sensors, and then discharged overboard. The water quality mapping system includes a Garmin model GPSMAP168 Sounder chartplotting receiver and depth-finder, a YSI 6600 sonde with a flow-through chamber, a YSI 6150 Rox dissolved oxygen probe, a 6561 pH probe, a YSI 6560 conductivity/temperature probe, a 6136 turbidity probe, and a 6025 chlorophyll probe. The sonde transmits data from the sensors to a ruggedized computer. Each water quality datum is associated with a date, time, water depth, and GPS Latitude and Longitude coordinates (NAD83).

Water quality mapping allows data to be collected rapidly (approximately every four seconds) while the boat is traveling at speeds of up to 25 knots. The water quality mapping system is compact and can be fit onto a small boat, allowing sampling in shallow water and the ability to map an entire small tributary such as the Severn River in less than a day. The distance between samples depends on vessel speed; generally at least one observation is collected every 30 meters (~100 feet). Details of the steps for calibrating, initializing and running the water quality mapping system are provided in Appendix 3.

The water quality mapping system samples water at depths of approximately 0.5-m below the surface. At calibration stations, grab samples also are collected at 0.5-m depth and filtered on site. See Appendix 3 for a description of the filtering procedures. Processed samples are sent to the Nutrient Analytical Services Laboratory (NASL). Parameters analyzed at NASL are total dissolved nitrogen, particulate nitrogen, nitrite, nitrite + nitrate, ammonium, total dissolved phosphorus, particulate phosphorus, orthophosphate, dissolved organic carbon, particulate carbon, total suspended solids, volatile suspended solids, particulate inorganic phosphorus, chlorophyll *a*, and pheophytin (Appendix 8). Only samples from Corsica River cruises will be analyzed for all of these parameters. Samples from the other cruises will be analyzed for chlorophyll *a* and TSS only. In addition, Secchi depth and photosynthetic active radiation (PAR) measurements are taken at calibration stations to calculate light attenuation (K_d) (Appendix 4). The calibration station locations are selected to:

- 1) sample the greatest possible range of water quality conditions found during each cruise;
- 2) sample a broad spatial area;
- 3) overlap with long-term fixed monitoring and continuous monitoring stations. For more details on equipment and sampling design, see [Boynton et al. 2002](#), Rohland et al. 2002 and [Bailey et al. 2008](#).

4. LABORATORY ANALYSIS

All laboratory-measured parameters are analyzed at the University of Maryland's Chesapeake Biological Laboratory (CBL), Nutrient Analytical Services Laboratory. For details, refer to Appendix VII in the Quality Assurance Project Plan for the Maryland Department of Natural Resources Chesapeake Bay Water Quality Monitoring Program Chemical and Physical Properties Component for the Period July 1, 2010 - June 30, 2011 (Cole and Parham 2010).

Documents included in Appendix VII are:

- *Determination of Dissolved Inorganic Nitrate plus Nitrite (NO₃+NO₂) in Fresh/Estuarine/Coastal Waters Using Cadmium Reduction, 13-Jan-09*
- *Determination of Dissolved Inorganic Nitrate plus Nitrite (NO₃+NO₂) in Fresh/Estuarine/Coastal Waters Using Enzyme Catalyzed Reduction, 13-Jan-09*
- *Determination of Dissolved Inorganic Ammonium (NH₄) in Fresh/Estuarine/Coastal Waters, 19-Mar-09*
- *Determination of Dissolved Inorganic Nitrite (NO₂) in Fresh/Estuarine/Coastal Waters, 12-Mar-09*
- *Determination of Dissolved Inorganic Orthophosphate (PO₄) in Fresh/Estuarine/Coastal Waters, 19-Feb-09*
- *Determination of Total Dissolved Nitrogen (TDN) in Fresh/Estuarine/Coastal Waters Using Alkaline Persulfate Digestion of Nitrogen to Nitrate and Measured Using Cadmium Reduction, 13-Apr-10*
- *Determination of Total Dissolved Phosphorus (TDP) in Fresh/Estuarine/Coastal Waters Using Alkaline Persulfate Digestion of Phosphorus to Orthophosphate (PO₄), 13-Apr-10*
- *Determination of Total Dissolved Nitrogen (TDN) in Fresh/Estuarine/Coastal Waters Using Alkaline Persulfate Digestion of Nitrogen to Nitrate and Measured Using Enzyme Catalyzed Reduction, 13-Apr-10*
- *Determination of Total Particulate Phosphorus (TPP) and Particulate Inorganic Phosphorus (PIP) in Fresh/Estuarine/Coastal Waters, 1-Dec-09*
- *Determination of Total Suspended Solids (TSS) and Total Volatile Solids (TVS) in Fresh/Estuarine/Coastal Waters, 2008*
- *Determination of Dissolved Organic Carbon (NPOC), Total Organic Carbon, and Dissolved Inorganic Carbon in Fresh/Estuarine/Coastal Waters Using High Temperature Combustion and Infrared Detection, 8/12/2009*
- *Determination of Carbon and Nitrogen in Particulates and Sediments of Fresh/Estuarine/Coastal Waters, Plant and Animal Tissue and Soils Using Elemental Analysis, 2008*
- *Spectrophotometer Determination of Chlorophyll a in Waters and Sediments of Fresh/Estuarine/Coastal Areas, 3/31/2010*
- *Determination of Silicate from Fresh, Estuarine, Coastal Waters Using the Molybdosilicate Method on the AquaKem 250 Analyzer 8/14/2009*

Current versions of NASL methods documents are maintained on-line by NASL and may be accessed at the following URL: <http://nasl.cbl.umces.edu/Methods.htm>.

To ensure that samples are processed within the holding times, samples are packed in ice immediately after filtering and taken to the field office and stored in a freezer. The frozen samples are packed in ice and driven to NASL weekly to be processed. NASL staff process and analyze the samples within the holding time periods established under the specific parameter method reference and listed in Table 9.

5. DATA MANAGEMENT, VERIFICATION AND DOCUMENTATION

5.1 Continuous Monitoring

At continuous monitoring stations, sondes are retrieved, calibrated and replaced every two weeks from April to October. Three sites on the Corsica River, the Baltimore Harbor site in the Patapsco River, and the three National Estuarine Research Reserve (NERR) sites on the upper Patuxent and one NERR site at Otter Point Creek on the Bush River are maintained year round unless severe icing during the winter prohibits deployment. For these stations, continuous monitoring sondes are also generally retrieved, calibrated and replaced every two weeks between November and March.

In the field, before a continuous monitoring sonde is replaced, a three-way *in situ* match-up is conducted. The new (freshly calibrated) sonde is suspended next to the PVC tube, at the same depth of the old (deployed) sonde in the tube. A discrete check sonde (either a Hydrolab or similar YSI instrument) is also suspended in the water at the same depth. A synchronized reading is taken at the next sonde-data-storage 15-minute interval with the old, new and check sondes. A second synchronized reading is taken at the following 15-minute interval with just the old and the new sondes. After two synchronized readings have been taken, a water column profile is conducted using the discrete sonde (Appendix 2). After conducting the water column profile, the old sonde is removed from the PVC tube and the tube is cleaned with a brush (Webster™ duster or similar) to remove biofouling and clear debris from the inside and outside of the tube as well as from any telemetry cables or the floating mechanism (if applicable). Once everything has been cleaned, the new sonde is placed in the PVC tube.

The three-way comparison assures that the new and old sondes are both reading each parameter within a certain tolerance (Table 10). The check sonde allows for notation on whether or not the parameters are fluctuating or stable (Appendix 2).

The retrieved sonde is returned to the field office and placed in 100% air saturated water. The sonde must rest in the air saturated water for approximately 20 minutes to equilibrate to temperature and pressure (often the sonde is left over night). After equilibration, a dissolved oxygen check is conducted as outlined in Appendix 2, the data are uploaded to a personal computer using YSI's Ecowatch™ software, and the remaining post-calibration procedures are conducted as outlined in Appendix 2.

Table 10. Acceptable drift tolerances for YSI 6600EDS/V2 sondes following post-calibration check.

Parameter	Value
Chlorophyll	±5 % of true value
Dissolved Oxygen	±0.5 mg/L
pH	±0.2 pH units
Specific Conductance	±5 % of true value
Turbidity	±5 % of true value
Water Temperature	±0.2 °C

After post-calibration procedures have been completed, data are subjected to a series of quality assurance (QA) and quality control (QC) checks to ensure that the data are not erroneous and that they are within the range of the sensor instrumentation (Appendix 1). Data from the three-way *in situ* match-up is first used to determine if a specific probe has drifted outside of an acceptable range (Table 10). Data may be rejected during the QA/QC checks when post-calibration drift exceeds the limits stated in Table 10 in both the post-calibration and the *in situ* comparables, or when data are clearly associated with probe failures. Section 5.3 describes the data management procedures common to the continuous monitoring and water quality mapping projects.

Data from telemetered stations are examined daily by DNR staff. Additionally, several automated programs have been put in place that examine the real-time data and notify DNR staff via e-mail when chlorophyll levels (algal blooms) and low dissolved oxygen events occur so that supplemental sampling may be conducted if appropriate. Automated programs also alert DNR staff via e-mail when equipment

malfunctions and probe failures may be occurring at real-time continuous monitoring stations. To ensure the quality of the data presented on the Eyes on the Bay (<http://www.eyesonthebay.net>) website, the real-time data is replaced with the QA/QC'd data generated after continuous monitoring sonde replacement. While every effort is made to ensure the quality of the data presented on Eyes on the Bay, DNR places disclaimers on the web site that state the following:

NOTE: Results displayed in "Current Results" are provisional and have not undergone full Quality Assurance/Quality Control procedures. Results in "Archived Results" also may not have undergone full Quality Assurance/Quality Control procedures. Although Maryland DNR believes the data presented here are correct, we cannot guarantee their accuracy at this time. Due to the technologies being used for turbidity, fluorescence and depth measurements, these results in particular may be subject to inaccuracies.

At the end of the monitoring season, DNR staff conduct additional QA/QC procedures to discover problem data which may not have been detected earlier. Staff plot all of the data and then thoroughly research any outliers or other unusual values. For example, staff compare values outside the normal range to historic values and values elsewhere in the Bay, consider weather events, and consult with field staff regarding possible legitimate causes for those values. In cases where data are determined, by the Quality Assurance officer, to be unreliable, the reason(s) values were determined to be unacceptable are documented with error codes and comments. Unreliable data were masked. No data were discarded. Only data considered reliable are published in reports or on the web.

5.2 Water Quality Mapping

Water Quality Mapping (WQM) is generally conducted once monthly in tributaries or Chesapeake Bay segments from April-October (Table 4, Figure 1). For tributaries with submerged aquatic vegetation restoration, specific monitoring projects, or in polyhaline segments sampling may begin in March and end in November. In 2010, mapping surveys will be conducted in three Maryland Chesapeake Bay segments (CB3MH, HNGMH, and PATMH) plus the Corsica River (within CHSOH).

Cruise tracks vary depending on the system. In general, a square-wave pattern is followed by alternately sampling shallow shoreline areas and open, deeper waters while traveling up and downriver. Alternative cruise paths may be followed if tributary size or shape dictates otherwise. Cruise patterns are selected to obtain representative coverage of shallow water habitats and open waters so that segment-wide criteria can be assessed as accurately as possible. Navigational issues and placement of representative calibration sites also determines ultimate cruise tracks for WQM.

During data collection, field personnel keep a logbook and document any incidents or observations that may affect the integrity or interpretation of the data. Such observations may include perturbation of bottom sediments by the boat, observances of algal blooms or equipment malfunctions. After data collection, field personnel use the Shallow Water Monitoring QA/QC macro (See Appendix 13) to format data, discover and evaluate anomalous values, and to add error codes based on field notes and range checks where appropriate.

Original data files are named with a three-letter segment designation and an eight digit date (e.g. SEV05272005). Files that have been through the QAQC process are labeled with a "Q". After initial QA/QC by field personnel, data files are reviewed again by a data analyst. Scatter plots are generated to discover anomalous values. Data are also viewed within a GIS context, a procedure that can highlight positional errors and highlight errors that might only be observed within a geographical display.

Preliminary maps of chlorophyll, dissolved oxygen, turbidity, water temperature and salinity are created and posted to the Water Quality Mapping Data page (http://mddnr.chesapeakebay.net/sim/dataflow_data.cfm) of the Eyes on the Bay website

(<http://www.eyesonthebay.net>). Maps are generated using a default inverse distance weighted interpolation procedure. These maps give an overall perspective of water quality conditions and are meant for general reference, not for detailed analysis.

Federal Geographic Data Commission compliant metadata records are routinely generated to describe the Water Quality Mapping project years, and will be available for use in understanding with any data downloads from the website.

5.3 Data Management

All shallow water monitoring data (continuous monitoring and water quality mapping) are maintained in a Shallow Water Monitoring database as part of Maryland DNR's Water Quality Monitoring Program. Data that are rejected during QA/QC checks are never deleted. Data determined to be unreliable are masked with an appropriate error code (see Appendix 11) rather than deleted. This ensures that all raw data are archived should the need ever arise to evaluate those values in the future. The potential also exists that future techniques and technologies may make it possible to utilize data that were previously rejected. After the data from a deployment have undergone QA/QC checks, the QA/QC'd data files are transferred to an internal network directory where they are automatically inserted into DNR's Shallow Water Monitoring database. Redundant backup copies of all raw data and QA/QC'd data are also maintained.

A new data submission system is currently being developed and tested that will automatically submit data from the Shallow Water Monitoring database to the Chesapeake Bay Program via FTP and XML communications protocols. Figures 2 and 3, respectively, illustrate Continuous Monitoring and Water Quality Mapping data management processes. This new data submission method will streamline data submission and sharing between DNR and the Bay Program by reducing the Bay Program's role in data management. Any changes made to DNR's database will be automatically transmitted to the Bay Program and mirrored in their database. This will significantly reduce or eliminate issues associated with data versioning. This new system will ensure that both DNR and the Bay Program are working from the same dataset at all times.

Maryland Continuous Monitoring

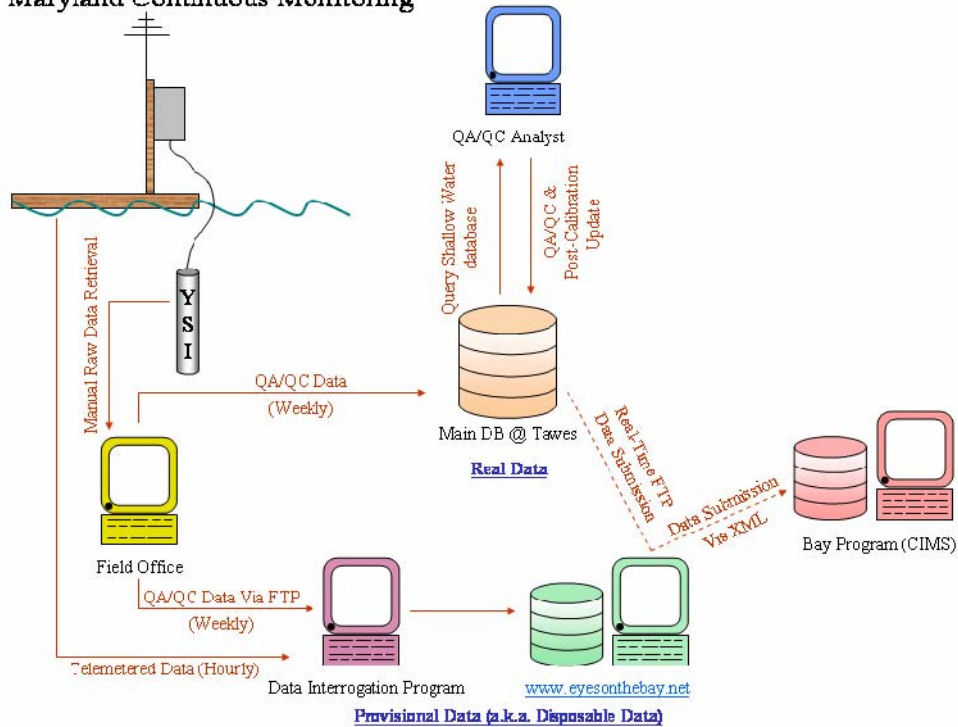


Figure 2. Conceptual diagram of Continuous Monitoring data management components, including automated data submission from DNR to the Bay Program.

Maryland Water Quality Mapping

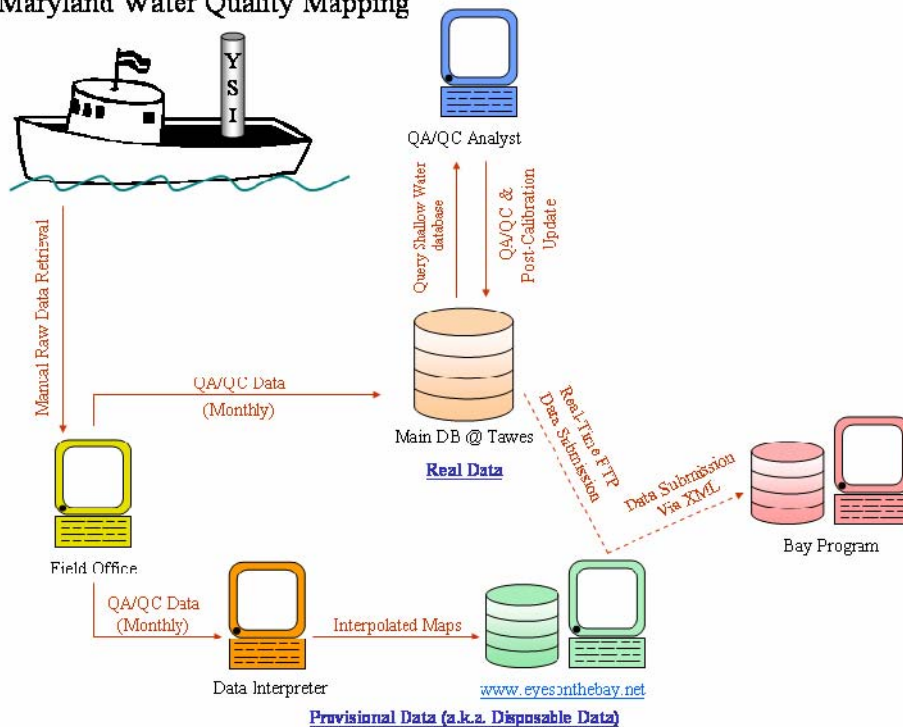


Figure 3. Conceptual diagram of Water Quality Mapping data management components, including automated data submission from DNR to the Bay Program.

5.4 Documentation and Records

Documentation and records maintained by the Continuous Monitoring project and the Water Quality Mapping project include: YSI Calibration and Post-Calibration Procedures (Appendix 5 and 6), Continuous Monitoring and Water Quality Mapping Filtering Methods (Appendix 7), Photosynthetic Active Radiation Protocol (Appendix 4), Continuous Monitoring Procedures (Appendix 2), Water Quality Mapping Procedures (Appendix 3), Continuous Monitoring Instrument Calibration and Comparison Tables and Calibration Log (Appendix 5), Continuous Monitoring Data Verification and Management Procedures (Appendix 12), Water Quality Mapping Data Verification and Management Procedures (Appendix 13) and the Log of Significant Changes (Appendix 14).

6. PROJECT QUALITY ASSURANCE/QUALITY CONTROL

NOTE: On September 10, 2007, the deionized (DI) water generator used by Maryland DNR was upgraded from an in-line filter cartridge type, to a reverse osmosis/UV sterilization type. The new apparatus is a Thermo Scientific Barnstead DIamond™ TII Water System. Refer to Thermo Scientific, 2007. Barnstead DIamond TII Type II Water System Operation Manua and Barnstead DIamond TII Type II Storage Reservoir Operation Manual). A log is kept at the front of the DI System Manual to document all changes and updates made to the system. Also, starting in 2010, along with filtered samples for nutrient analysis, blank DI samples will be sent to CBL to check for contamination of DI water used in filtering samples.

An initial quality assurance (QA) and quality control (QC) check is performed by field staff, who inspect all data for outliers and mask outliers in the data set as deemed appropriate before reporting any data. Field staff also mask any data for parameters that did not post-calibrate within specifications. See tables 7 and 8 in Section 2 and table 10 in Section 5 for limits on accuracy and instrument drift. See Appendices 5 and 6 (YSI Calibration and Post-Calibration Procedures) and Appendices 12 and 13 (Continuous Monitoring and Water Quality Mapping Data Verification and Management Procedures) for a description of QA/QC and calibration procedures used by the field staff. Additional quality assurance and control is performed by members of TEA staff to identify any erroneous data missed in the initial QA/QC and compare current data to historical data.

6.1 Accuracy

The accuracy (closeness to the true value) of the collected data is controlled and assured by the proper use, calibration, and maintenance of both field and laboratory equipment for the measurement of physical and chemical parameters. All instruments are identified by a unique number, used as an index for documentation of calibration, repair, and preventive maintenance.

Daily quality control checks (including the running of blanks and standards) are used to control and assure laboratory accuracy. See Cole and Parham (2010; Appendix VII) for details on the frequency of running blanks and standards and for additional procedures for laboratory quality assurance and control.

Accuracy of laboratory results is also assessed through DNR's participation in the Chesapeake Bay Coordinated Split Sample Program (CSSP), a split sampling program in which the coordinated split samples are analyzed by five laboratories involved in Chesapeake Bay monitoring. CSSP was established in June 1989 to establish a measure of comparability between sampling and analytical operations for water quality monitoring throughout the Chesapeake Bay and its tributaries. DNR follows the protocols in the *Chesapeake Bay Coordinated Split Sample Program Implementation Guidelines* (EPA 1991) and its revisions. Split samples are collected quarterly. Results are analyzed by appropriate statistical

methods to determine if results differ significantly among labs. When a difference occurs, discussion begins regarding techniques and potential methods changes to resolve discrepancies through the Analytical Methods and Quality Assurance Workgroup.

Additionally, CBL participates two times per year in the United States Geologic Survey (USGS) reference sample program and permits USGS to release the results to the Chesapeake Bay Program Quality Assurance Officer.

Procedures to control and assure the accuracy of field measurements involve the calibration of field instruments, the verification of these calibrations, equipment maintenance, and collection of filter blanks.

6.2 Precision

Precision (repeatability) of the chemical analytical methods is determined and documented from duplicate analyses. The protocols for duplicate analyses in the laboratory are described in the Standard Operating Procedures for CBL, found in Appendix VII in the Quality Assurance Project Plan for the Maryland Department of Natural Resources Chesapeake Bay Water Quality Monitoring Program Chemical and Physical Properties Component for the Period July 1, 2010 - June 30, 2011 (Cole and Parham 2010).

6.3 Data Review and Data Verification

Data review and data verification ensure the quality assurance and quality control of data. These are discussed in Section 5 above.

6.4 Audits

Performance audits for chemical analyses conducted at the University of Maryland's Chesapeake Biological Laboratory Nutrient Analytical Services Laboratory are based on the results of samples distributed by the EPA Chesapeake Bay Program Blind Audit Program. These samples must fall within the 95% confidence interval for acceptance. If results fall outside this range, corrective actions for each parameter and measurement are taken. CBL prepares blind audit samples for all CBP participating laboratories and also analyzes some of those samples. For dissolved nitrogen and dissolved phosphorus, a laboratory quality assurance officer determines the concentrations in the ampules, prepares the concentrates, and seals the ampules. A different person then analyzes the sample blindly. For particulate fractions (particulate carbon/particulate nitrogen and particulate phosphorus), samples are filtered and then placed in pouches in the freezer until they are ready to be sent to the other CBP participating laboratories - Delaware Department of Natural Resources and Environmental Control, Hampton Roads Sanitation District, Maryland Department of Health and Mental Hygiene, Massachusetts Water Resource Authority, Morgan State University, University of Maryland's Horn Point Laboratory, University of Delaware College of Marine Science, Old Dominion University, the Pennsylvania Academy of Science, Pennsylvania Department of Environmental Resources, Virginia Institute of Marine Science, Virginia Division of Consolidated Laboratory Services, Virginia Polytechnic Institute's Occoquan Laboratory, and, finally, Chesapeake Biological Laboratory, itself.

Once annually, the EPA Chesapeake Bay Program quality assurance officer conducts an on-site audit of the mainstem laboratory and field programs. The DNR Quality Assurance Officer communicates on a weekly basis with the field program staff and confers with the laboratory quality assurance officers to ensure that all aspects of the program are being conducted properly.

6.5 Data Quality Indicators

To ensure that data are of the quality required to support Chesapeake Bay Program management decisions, Maryland's Shallow Water Quality Monitoring Program strives to provide monitoring data of known and consistent quality to the CBPO by generally following the guidelines outlined in Section E of the [*Recommended Guidelines for Sampling and Analysis in the Chesapeake Bay Monitoring Program, August 1996*](#) (EPA 1996). These guidelines recommend precision goals of field and lab measurements of

<20 percent of the coefficient of variation, accuracy goals within 80 to 120 percent, and completeness goals of 100 percent. Detection limit ranges are provided in Tables 2 and 3 above.

7. DATA ANALYSIS AND REPORTING

As noted previously, the objectives of the Shallow Water Monitoring Program are to 1) assess the newly developed Chesapeake Bay water quality criteria for dissolved oxygen, water clarity and chlorophyll in shallow and open water habitats, 2) determine attainment or non-attainment of shallow water and open water habitats for their designated uses, 3) provide spatially and temporally intensive data in shallow water habitats to improve water quality mapping using interpolation, 4) assess SAV habitats and identify potential SAV restoration sites and 5) provide information to better understand ecosystem processes in shallow water and open water environments.

A regression model for use in deriving chlorophyll *a* from *in situ* chlorophyll fluorescence data is under development. Regression models for use in calculating *K_d* from *in situ* turbidity, chlorophyll and salinity data have been developed and continue to be refined as new data become available. These models have been used in two reporting cycles for water clarity acreage assessments.

Real-time data (uploaded from transmitters hourly) and near-time data (uploaded every two weeks) will be available on the DNR Eyes on the Bay web site (<http://www.eyesonthebay.net>). These data are not quality assured and will be identified as such. Semi-annual progress reports will be provided to the Chesapeake Bay Program January 15, 2010 and July 15, 2010.

8. PROJECT ORGANIZATION AND RESPONSIBILITY

This section lists the individuals responsible for the major aspects of Maryland's Shallow Water Quality Monitoring Program.

Director and Principal Investigator: Thomas Parham, Director, Tidewater Ecosystem Assessment, Maryland Department of Natural Resources, 580 Taylor Avenue, Annapolis, Maryland 21401, tparham@dnr.state.md.us, 410-260-8633.

RESPONSIBILITIES: The director and principal investigator is responsible for overseeing the administrative aspects of the program including fiscal management, coordination among other DNR managers and coordination with cooperating agencies and institutions. This individual is also responsible for technical design, conduct and data analysis of the program.

Quality Assurance Officer: Bruce Michael, Director, Resource Assessment Service, Maryland Department of Natural Resources, 580 Taylor Avenue, Annapolis, Maryland 21401, bmichael@dnr.state.md.us, 410-260-8627.

RESPONSIBILITIES: The quality assurance officer is responsible for documenting and assuring the conduct of field, laboratory, and data management procedures that comprise this study.

Field Sampling Operations: Sally Bowen, Project Chief, Monitoring Field Office, Tidewater Ecosystem Assessment, Maryland Department of Natural Resources, 580 Taylor Avenue, Annapolis, Maryland 21401, sbowen@dnr.state.md.us, 410-990-4528.

RESPONSIBILITIES: This individual is responsible for administration of field sampling activities including sample collection, sample storage and sample delivery to laboratories at all continuous monitoring sites and most water quality mapping sites.

Field Sampling Operations: Chris Tanner, St. Mary's College River Project, 18952 East Fisher Rd St. Mary's City, Maryland 20686, cetanner@smcm.edu, (410) 895-4374.

RESPONSIBILITIES: This individual is responsible for administration of field sampling activities including sample collection, sample storage and sample delivery to laboratories for one continuous monitoring site in the St. Mary's River.

Instrument Management: John Zimmerelli, Monitoring Field Office, Tidewater Ecosystem Assessment, Maryland Department of Natural Resources, 580 Taylor Avenue, Annapolis, Maryland 21401, jzimmerelli@dnr.state.md.us, 410-990-4523.

RESPONSIBILITIES: This individual is responsible for the management of all continuous monitoring equipment.

Instrument Management: Jamie Strong, Monitoring Field Office, Tidewater Ecosystem Assessment, Maryland Department of Natural Resources, 580 Taylor Avenue, Annapolis, Maryland 21401, jstrong@dnr.state.md.us, 410-990-4534.

RESPONSIBILITIES: This individual is responsible for the management of all water quality mapping equipment.

Laboratory Analyses/Water Column Chemistry: Carl Zimmerman, Chesapeake Biological Lab, University of Maryland, Center for Environmental Science, Solomons, Maryland 20688-0038, carlz@cbl.umces.edu, 410-326-7252.

RESPONSIBILITIES: This individual is responsible for analysis of suspended solids, nutrient and chlorophyll of water samples.

Data Management: Mark Trice/Matt Hall//Ben Cole/Bill Romano/Diana Domotor/Brian Smith, Tidewater Ecosystem Assessment, Maryland Department of Natural Resources, 580 Taylor Avenue, Annapolis, Maryland 21401, 410-260-8630.

RESPONSIBILITIES: These individuals are responsible for overseeing the management of field and laboratory data collected under this program; managing historical field and laboratory data collected under this program; and maintaining existing data management software.

Data Analysis and Report Preparation: Mark Trice/Bill Romano/Ben Cole/Diana Domotor/Matt Hall/Brian Smith, Tidewater Ecosystem Assessment, Maryland Department of Natural Resources, 580 Taylor Avenue, Annapolis, Maryland 21401, 410-260-8630.

RESPONSIBILITIES: These individuals are responsible for statistical analyses, GIS mapping, and report preparation under this program.

9. REFERENCES

- Boynton, W.R., R.M. Stankelis, F.M. Rohland, J.M. Frank, J.M. Lawrence, B. Bean, H. Pine, M. Quigley, and M. Kaumeyer. 2002. *Maryland Chesapeake Bay Water Quality Monitoring Program, Ecosystem Processes Component (EPC), [Level One Report No. 19](#) (Data), Data Report, January - December 2001*. Prepared for the Maryland Department of Natural Resources. University of Maryland Center for Environmental Sciences, Chesapeake Biological Laboratory, P.O. Box 38, Solomons, MD.
- E. M. Bailey, M.A.C. Ceballos and W.R. Boynton. 2008. *Ecosystem Processes Component (EPC). Maryland Chesapeake Bay Water Quality Monitoring Program, [Level 1 report No. 25](#). Jul. 1984 - Dec. 2007*. Ref. No. [UMCES]CBL 08-080. Prepared for the Maryland Department of Natural Resources. University of Maryland Center for Environmental Sciences, Chesapeake Biological Laboratory, P.O. Box 38, Solomons, MD.
- Cole, B., Parham, T. 2010. Quality Assurance Project Plan for the Maryland Department of Natural Resources Chesapeake Bay Water Quality Monitoring Program - Chemical and Physical Properties Component for the period July 1, 2010 - June 30, 2011. Prepared by Maryland Department of Natural Resources, Tidewater Ecosystem Assessment for U.S. Environmental Protection Agency Chesapeake Bay Program.
- Rohland, F.M., W.R. Boynton, R.M. Stankelis, B.W. Bean, and H.J. Pine. 2002. *Maryland Chesapeake Bay Water Quality Monitoring Program, Ecosystem Processes Component (EPC), [Quality Assurance Project Plan for Water Quality Monitoring in Chesapeake bay for FY 2003](#), July 2002-June 2003, Revision 7*.
- U.S. Environmental Protection Agency (EPA). 1996. [Recommended Guidelines for Sampling and Analysis in the Chesapeake Bay Monitoring Program](#). Chesapeake Bay Program, August 1996. CBP/TRS 148/96; EPA 903-R-96-006.
- U.S. Environmental Protection Agency (EPA). 1991. *Chesapeake Bay Coordinated Split Sample Program Implementation Guidelines, May 1991*. Chesapeake Bay Program: Annapolis, MD. CBP/TRS 58/91. http://www.chesapeakebay.net/pub_order.aspx?publicationid=12851

10. APPENDICES

Appendix 1. YSI 6600EDS/V2 Specification Sheets..... 29
Appendix 2. Continuous Monitoring Procedures 31
Appendix 3. Water Quality Mapping Procedures 36
Appendix 4. Photosynthetic Active Radiation Protocol 41
Appendix 5. YSI 6600EDS/V2 Calibration and Post-Calibration Procedures (Continuous Monitoring)..... 44
Appendix 6. YSI 6600/V2 Calibration, Daily Check, and Post-Calibration Procedures (Water Quality Mapping)..... 52
Appendix 7. Continuous Monitoring and Water Quality Mapping Filtering Methods 59
Appendix 8. Nutrient Analytical Services Laboratory / Chesapeake Biological Laboratory Methods..... 63
Appendix 9. Continuous Monitoring Parameters..... 64
Appendix 10. Water Quality Mapping Parameters..... 65
Appendix 11. Continuous Monitoring and Water Quality Mapping Error Codes 66
Appendix 12. Continuous Monitoring Data Verification and Management Procedures.... 68
Appendix 13. Water Quality Mapping Data Verification and Management Procedures... 74
Appendix 14. Log of Significant Changes..... 77

Appendix 1. YSI 6600EDS Specification Sheets

YSI 6600EDS Sensor Specifications			
	Range	Resolution	Accuracy
Dissolved Oxygen* % Saturation 6562 Rapid Pulse™ Sensor*	0 to 500%	0.1%	0 to 200%; ±2% of reading or 2% air saturation, whichever is greater; 200 to 500%; ±6% of reading
Dissolved Oxygen* mg/L 6562 Rapid Pulse™ Sensor*	0 to 50 mg/L	0.01 mg/L	0 to 20 mg/L; ± 0.2 mg/L or 2% of reading, whichever is greater; 20 to 50 mg/L; ±6% of reading
Conductivity** 6560 Sensor*	0 to 100 mS/cm	0.001 to 0.1 mS/cm (range dependent)	±0.5% of reading + 0.001 mS/cm
Salinity	0 to 70 ppt	0.01 ppt	±1% of reading or 0.1 ppt, whichever is greater
Temperature 6560 Sensor*	-5 to +50°C	0.01°C	±0.15°C
pH 6561 Sensor*	0 to 14 units	0.01 unit	±0.2 unit
ORP	-999 to +999 mV	0.1 mV	±20 mV
Depth	Deep 0 to 656 ft, 200 m Medium 0 to 200 ft, 61 m Shallow 0 to 30 ft, 9.1 m Vented Level 0 to 30 ft, 9.1 m	0.001 ft, 0.001 m 0.001 ft, 0.001 m 0.001 ft, 0.001 m 0.001 ft, 0.001 m	±1 ft, ±0.3 m ±0.4 ft, ±0.12 m ±0.06 ft, ±0.02 m ±0.01 ft, 0.003 m
Turbidity* 6136 Sensor*	0 to 1,000 NTU	0.1 NTU	±2% of reading or 0.3 NTU, whichever is greater**
Rhodamine*	0-200 µg/L	0.1 µg/L	±5% reading or 1 µg/L, whichever is greater

* Maximum depth rating for all standard optical sensors is 200 feet, 61 m. Also available in Deep Depth option: 656 feet, 200 m.
 ** Report outputs of specific conductance (conductivity corrected to 25°C), resistivity, and total dissolved solids are also provided. These values are automatically calculated from conductivity according to algorithms found in *Standard Methods for the Examination of Water and Wastewater* (ed 1989).
 **In YSI AMCO-AEPA Polymer Standards.

	Range	Detection Limit	Resolution	Linearity
BGA - Phycocyanin*	~0 to 280,000 cells/mL† 0 to 100 RFU	~220 cells/mL§	1 cell/mL 0.1 RFU	R ² > 0.9999**
BGA - Phycoerythrin*	~0 to 200,000 cells/mL† 0 to 100 RFU	~450 cells/mL§	1 cell/mL 0.1 RFU	R ² > 0.9999***
Chlorophyll* 6025 Sensor*	~0 to 400 µg/L 0 to 100 RFU	~0.1 µg/L§§	0.1 µg/L Chl 0.1% RFU	R ² > 0.9999****

† Maximum depth rating for all standard optical probes is 200 feet, 61 m. Also available in Deep Depth option 656 ft 200 m.
 ‡ Explanation of Ranges can be found in the 'Principles of Operation' section of the 6-Series Manual.
 § Estimated from cultures of *Microcystis aeruginosa*.
 §§ Estimated from cultures *Synechococcus* sp.
 §§§ Determined from cultures of *Isochrysis* sp. and chlorophyll *a* concentration determined via extractions.
 **Relative to serial dilution of Rhodamine WT (0-400 µg/L).
 ***Relative to serial dilution of Rhodamine WT (0-8 µg/L).
 ****Relative to serial dilution of Rhodamine WT (0-500 µg/L).
 EGA = Blue-Green Algae
 RFU = Relative Fluorescence Units
 ~ = Approximately

YSI 6600EDS Sonde Specifications			
Medium	Fresh, sea or polluted water	Software	EcoWatch*
Temperature	Operating -5 to +50°C Storage -10 to +60°C	Dimensions	Diameter 3.5 in, 8.9 cm Length, no depth 19.6 in, 34.3 cm Length, depth 21.6 in, 54.9 cm Weight, depth and batteries 7 lbs, 3.18 kg
Communications	RS-232, SDI-12	Power	External 12 V DC Internal 8 C-size alkaline batteries

Appendix 1 (continued). YSI 6600V2 Specification Sheets

YSI 6600 V2 Sensor Specifications			
	Range	Resolution	Accuracy
ROX™ Optical Dissolved Oxygen* % Saturation	0 to 500%	0.1%	0 to 200%: ±1% of reading or 1% air saturation, whichever is greater; 200 to 500%: ±15% of reading
ROX™ Optical Dissolved Oxygen* mg/L	0 to 50 mg/L	0.01 mg/L	0 to 20 mg/L: ± 0.1 mg/L or 1% of reading, whichever is greater; 20 to 50 mg/L: ±15% of reading
Dissolved Oxygen** % Saturation 6562 Rapid Pulse™ Sensor*	ET✓ 0 to 500%	0.1%	0 to 200%: ±2% of reading or 2% air saturation, whichever is greater; 200 to 500%: ±6% of reading
Dissolved Oxygen** mg/L 6562 Rapid Pulse™ Sensor*	ET✓ 0 to 50 mg/L	0.01 mg/L	0 to 20 mg/L: ± 0.2 mg/L or 2% of reading, whichever is greater; 20 to 50 mg/L: ±6% of reading
Conductivity*** 6560 Sensor*	ET✓ 0 to 100 mS/cm	0.001 to 0.1 mS/cm (range dependent)	±0.5% of reading + 0.001 mS/cm
Salinity	0 to 70 ppt	0.01 ppt	±1% of reading or 0.1 ppt, whichever is greater
Temperature 6560 Sensor*	ET✓ -5 to +50°C	0.01°C	±0.15°C
pH 6561 Sensor*	ET✓ 0 to 14 units	0.01 unit	±0.2 unit
ORP	-999 to +999 mV	0.1 mV	±20 mV
Depth	Deep 0 to 656 ft, 200 m	0.001 ft, 0.001 m	±1 ft, ±0.3 m
	Medium 0 to 200 ft, 61 m	0.001 ft, 0.001 m	±0.4 ft, ±0.12 m
	Shallow 0 to 30 ft, 9.1 m	0.001 ft, 0.001 m	±0.06 ft, ±0.02 m
	Vented Level 0 to 30 ft, 9.1 m	0.001 ft, 0.001 m	±0.01 ft, 0.003 m
Turbidity* 6136 Sensor*	ET✓ 0 to 1,000 NTU	0.1 NTU	±2% of reading or 0.3 NTU, whichever is greater**

* Maximum depth rating for all optical probes is 200 feet, 61 m. Turbidity and Rhodamine are also available in a Deep Depth option (0 to 200 m).
 ** Rapid Pulse is only available on 6600 V2-2 (two optical ports version).
 *** Report outputs of specific conductance (conductivity corrected to 25°C), resistivity, and total dissolved solids are also provided. These values are automatically calculated from conductivity according to algorithms found in *Standard Methods for the Examination of Water and Wastewater* (ed 1989).

**In YSI AMCO-AEPA Polymer Standards.

	Range	Detection Limit	Resolution	Linearity
Chlorophyll* 6025 Sensor* ET✓	~0 to 400 µg/L 0 to 100 RFU	~0.1 µg/L ^{§§§}	0.1 µg/L Chl 0.1% RFU	R ² > 0.9999****
* Maximum depth rating for all optical probes is 200 feet, 61 m. Also available in a Deep Depth option (0 to 200 m). RFU = Relative Fluorescence Units	† Explanation of Ranges can be found in the 'Principles of Operation' section of the 6-Series Manual, Rev D.	§ Estimated from cultures of <i>Microcystis aeruginosa</i> . §§ Estimated from cultures <i>Synechococcus</i> sp. §§§ Determined from cultures of <i>Isochrysis</i> sp. and chlorophyll a concentration determined via extractions.	** For serial dilution of Rhodamine WT (0-400 µg/L). *** For serial dilution of Rhodamine WT (0-8 µg/L). **** For serial dilution of Rhodamine WT (0-500 µg/L).	

YSI 6600 V2 Sonde Specifications			
Medium	Fresh, sea or polluted water	Software	EcoWatch®
Temperature	Operating Storage -5 to +50°C -10 to +60°C	Dimensions	Diameter Length, no depth Length, with depth Weight 3.5 in, 8.9 cm 19.6 in, 49.8 cm 21.6 in, 54.9 cm 7 lbs, 3.18 kg (batteries installed, with depth)
Communications	RS-232, SDI-12	Power	External Internal 12 V DC 8 C-size alkaline batteries

Appendix 2. Continuous Monitoring Procedures

C. Trumbauer, J. Zimmerelli

Revised: May 2008

Installation:

- To collect seamless continuous data, two instruments are needed for each site. Deploy the first instrument at the site for two weeks. At the end of the deployment, replace this instrument with the second instrument. During the next week, post-calibrate and clean the first instrument and prepare it to be deployed the next week.
- Use a 4" diameter PVC gasketed drain pipe to install a site. The length depends on the depth of the selected site.
- Coat the PVC pipe with an effective anti-fouling paint to prevent biological contamination.
- Drill 2" diameter holes down the length of the PVC pipe that will typically lie below the water line to allow water to pass through the tube.
- Attach the tube to a wooden 2x4 using two copper or stainless steel clevis hangers. Then attach the 2x4 to a piling or pier using lag bolts.
- Install a stop bolt at the bottom of the tube to prevent the loss of a sonde.
- Place a chain through the tube, and lock it with a combination or key lock to prevent theft or vandalism.

Calibration:

- Calibrate each instrument using laboratory quality standards directly prior to each deployment (see Appendix 5).
- Synchronize the internal clock in the instrument and all watches with the official time. The official time is available by calling 410-844-1212. A radio-controlled clock that automatically synchronizes to the Atomic Clock in Boulder, CO can also be used. Time is always set in Eastern Standard Time.

Deployment:

- Deploy the instrument at a fixed site at a regular interval, e.g., weekly or bi-weekly.
- Record the date, location, weather conditions, tide, time of deployment, and initials on the calibration log, and note any extra samples taken.
- Leave the instrument that was deployed the prior week in place inside the PVC tube while suspending the freshly calibrated instrument at the same depth, adjacent to the old one. Allow both instruments to take at least one simultaneous reading in order to compare the data from the two instruments. This comparison is used during QA/QC process to ensure both instruments were taking accurate measurements
- Use a YSI, Hydrolab, or similar instrument with a display unit to take an additional simultaneous reading. The real-time display makes it possible to note any sudden fluctuations or trends in the water quality parameters.
- At exact time of sample reading, take a grab sample using an Alpha bottle suspended at the same depth as the sondes.

Sample Processing:

- Grab sample is filtered immediately after it is taken. Sample is filtered according to Chesapeake Bay Program protocol (see Appendix 7).
- Processed sample is iced down in the field, and frozen in a freezer upon return to the field office. It is then sent to lab for analysis at the end of the week via courier.

Water Column Profile:

Water column profiles should be taken at each continuous monitoring station when the YSI 6600 sondes are being replaced. This profile will be done with the check instrument (e.g., Hydrolab) and will measure the following parameters:

- Depth
- Water Temperature (°C)
- pH
- Specific Conductance (µmhos/cm)
- Dissolved Oxygen (mg/l)
- Salinity (ppt)

There should be NO layer code associated with these additional measurements. Layer codes are assigned only to those measurements taken at the same depth as the grab sample.

The following procedure should be followed for the profile:

If total depth < 3.0 m:**Floating Stations:**

Take Hydrolab readings at the same depth at which the YSI is suspended (1.0 m). This should be done at the exact instant that the YSI is logging its data. Next take Hydrolab readings at 0.3 m from the bottom. You must also take readings at 0.5 m depth, and 0.5 m intervals, e.g. 1.5, 2.0, 2.5, etc. You do not need to take readings within 0.2 m of a depth you already measured.

Examples:

Total depth = 1.7 m:

Hydrolab readings at 1.0; then 1.4 and 0.5 m. You do not need to sample 1.5 m since it is within 0.2 m of the bottom reading

Total depth = 2.9 m:

Hydrolab readings at 1.0; then 2.6, 2.0, 1.5 and 0.5 m.

Total depth = 2.4 m:

Hydrolab readings at 1.0; then 2.1, 1.5 and 0.5 m. You do not need to sample 2.0 m since it is within 0.2 m of the bottom reading

Fixed Stations (0.3 m above bottom):

Take Hydrolab readings at the same depth at which YSI is fixed (0.3 m from the bottom.) This should be done at the exact instant that the YSI is logging its data. You must also take readings at 0.5 m, and any 0.5 m intervals, e.g. 1.5, 2.0, 2.5, etc. You do not need to take readings within 0.2 m of a depth you already measured.

Examples:

Total depth = 0.7 m:

Hydrolab readings at 0.4 m only

Total depth = 1.9 m:

Hydrolab readings at 1.6, 1.0 and 0.5 m. You do not need to sample 1.5 m since it is within 0.2 m of the bottom reading

Total depth = 1.5 m:

Hydrolab readings at 1.2 and 0.5 m. You do not need to sample 1.0 m since it is within 0.2 m of the bottom reading.

Fixed Stations (0.5 m above bottom)

Take Hydrolab readings at the same depth at which YSI is fixed (0.5 m from the bottom.) This should be done at the exact instant that the YSI is logging its data. You must also take readings at 0.5 m, and any 1.0 m intervals, e.g. 1.5, 2.0, 2.5, etc. You do not need to take readings within 0.2 m of a depth you already measured.

Example:

Total depth = 1.9 m:

Hydrolab readings at 1.4, 1.0 and 0.5 m.

If Total Depth \geq 3.0 m:

Floating Stations:

Take Hydrolab readings at the same depth at which the YSI is suspended (1.0 m). This should be done at the exact instant that the YSI is logging its data. Next take Hydrolab readings at 0.3 m from the bottom. You must also take readings at 0.5 m depth, and 1.0 m intervals, e.g. 2.0, 3.0, etc. You do not need to take readings within 0.2 m of a depth you already measured.

Examples:

Total depth = 3.4 m:

Hydrolab readings at 1.0; then 3.1, 2.0 and 0.5 m. You do not need to sample 3.0 m since it is within 0.2 m of the bottom reading

Fixed Stations (0.3 m above bottom):

Take Hydrolab readings at the same depth at which YSI is fixed (0.3 m from the bottom.) This should be done at the exact instant that the YSI is logging its data. You must also take readings at 0.5 m, and any 1.0 m intervals, e.g. 2.0, 3.0, etc. You do not need to take readings within 0.2 m of a depth you already measured.

Examples:

Total depth = 3.2 m:

Hydrolab readings at 2.9, 2.0, 1.0 and 0.5 m.

Stations sampled 0.5 m above bottom:

Take Hydrolab readings at the same depth at which YSI is fixed (0.5 m from the bottom.)

This should be done at the exact instant that the YSI is logging its data. You must also take readings at 0.5 m, and any 1.0 m intervals, e.g. 1.0, 2.0, 3.0, etc. You do not need to take readings within 0.2 m of a depth you already measured.

Examples:

Total depth = 3.5 m:

Hydrolab readings at 3.0, 2.0, 1.0 and 0.5 m.

Retrieval:

- After both instruments have been allowed to take at least one simultaneous reading, remove the old instrument. It is best to take a second simultaneous reading whenever possible.
- Record the date, location, weather conditions, tide, time of retrieval, and initials on the calibration log, and note any extra samples taken.
- Brush out the instrument tube with a Webster-type brush, on the inside and outside.
- Deploy the fresh instrument in its place.
- Wrap the old instrument in a damp towel and take it back to the lab for post-calibration and cleaning.

Post-calibration/cleaning:

- Post-calibrate sensors on each retrieved instrument against laboratory standards to ensure that it was taking accurate measurements. It is best to complete sensor post-calibration procedures the day after the instrument is retrieved, after allowing the instrument to equilibrate to standard temperature and pressure overnight in 100% saturated air environment before conducting the post-calibration. If using an Optical Dissolved Oxygen sensor, the dissolved oxygen can be post-calibrated within 20 minutes of returning from the field by placing the instrument in a bucket of 100% air saturated water and allowing temperature and pressure to equilibrate. If field staff are unable to calibrate the instrument the day after retrieval, ensure that the instrument is post-calibrated by the second day after retrieval.
- After completion of post-calibration, thoroughly clean each instrument and prepare it for re-deployment the following week.

Figure 4 on the following page is an annotated example of a Continuous Monitoring Field data sheet.

NOTE: Beginning May 18, 2009, in order resolve a data management issue, Continuous Monitoring grab sample bottles and grab sample replicate bottles are labeled as follows.

Samples are collected every other week, up to three samples a month. The bottle of the first samples collected in a month should be labeled with a number from 1 to 99. Sample bottles collected the second or third time in any month should be labeled with 100 or 200 series numbers respectively. Sample bottles collected during the second sampling of any month should be labeled with a number from 100 to 199. Sample bottles collected during the third sampling of any month should be labeled with a number from 200 to 199.

For example, a sample bottle collected during the first sampling of a month might have the sample number 5, if the sample is collected in the second sampling of the month the sample number might be 105, if the sample is collected during the third sampling of the month, the sample number might be 205.

Replicate sample bottles should be labeled with 700 or 800 or 900 series numbers depending on the collection week. For example, a replicate sample bottle collected during the first sampling of a month might have the sample number 705, if the replicate sample is collected during the second sampling of the month, the sample number might be 805, if the replicate sample is collected during the third sampling of the month the sample number might be 905.

Grab samples collections in one month			
Bottle Numbers example	1st time	2nd time	3rd time
bottle number 6	6	106	206
bottle number 6 replicate	706	806	906
bottle number 14	14	114	214
bottle number 14 replicate	714	814	914

Appendix 3. Water Quality Mapping Procedures

W. Nelson, A.J. Strong, B. Cole

Revised: May 2009

The Water Quality Mapping project currently uses two different types of equipment units. They are referred to as “new units” and the “old unit” and procedures for both are detailed below.

Water Quality Mapping Procedures (New Units)

Equipment Set up:

1. Attach stainless steel ram to boat, before or after launching boat, using pre-drilled holes thru the port or starboard side transom of the boat with two bolts, two lock washers, and two nuts provided. Securely tighten with a 15/16” wrench or other suitable tool.
2. Attach depth finder transducer bracket to ram by inserting metal rod up thru hole in splash plate making sure that pointed side of transducer is facing the bow (front) of boat. Also make sure the transducer is below boat hull and water line. Securely tighten setscrew with 9/16” wrench or other suitable tool.
3. Launch research vessel.
4. After launching, insert gray PVC pipe with attached Rule 1100 live well pump down thru stainless steel ram and securely tighten with lever on ram.
5. Attach YSI Sensor Unit stand (big white thing about three feet tall with flow meter alarm and GPS antenna) to starboard or port side of research vessel using bolts, lock-washers, and nuts provided or other suitable means
6. Connect 1” diameter black hose to ram pump with a hose clamp or quick connect assembly and attach other end of hose to the **intake** port of the YSI Sensor Unit stand with a hose clamp or quick connect assembly. This port connects directly to grey YSI Flow-cell.
7. Connect the other 1” diameter clear hose to the YSI Sensor Unit stand **outflow** port and leave the other end of hose hanging over the starboard side or back of the boat.
8. Unscrew calibration cup from YSI and insert the probe end of the meter into the YSI grey flow-cell that is already mounted on the YSI meter stand, turn until meter will turn no more and then tighten it.
9. Prime the DATAFLOW ram by removing Rule 1100 pump head and pouring water into pipe until full. Replace Rule 1100 pump head.

External Power Hook-up:

1. Take YSI 9 pin cable and attach it to the YSI meter. Attach other end of cable to the designated “J3” connector on the case housing of the Processor Unit (small yellow suitcase).
2. Attach one end of GPS cable to the connector on side of the Sensor Unit and connect the other end of cable to the designated “J4” connector on the Processor Unit.
3. Attach one end of the 12 pin Flow meter cable to the connector on the side of the Sensor unit and connect the other end of the cable to the designated “J2” connector on the Processor Unit.
4. Connect the end of the transducer cable to the designated “J5” connector on the side of the Processor Unit.
5. Attach 3 pin Power cable (cable with power winch plug on one end) to the designated “J1” connector on the Processor Unit.
6. Take the 26 pin Computer monitor cable and attach one end to the “pig tail” on back of the monitor and the other end to the designated “J6” connector on the side of the Processor Unit.
7. Take the end of the keyboard cable and attach it to the designated “J7” connector on the Processor Unit.

8. Take the power winch plug and connect to the battery box wired with a power winch outlet and 12 volt DC battery.
9. Plug the Rule 1100 pump into the power winch outlet, already installed on the research vessel.
10. Flip DATAFLOW power switch to on.
11. Flip alarm horn switch to on when flow meter reaches 3.0 lpm on flow meter display.

Data Logging:

1. Turn on GPS by pushing power button on the Garmin GPSmap168 Sounder.
2. When computer has booted up, double click the "DATAFLOW" icon, then click ok when the next box appears, it should say "Labview for Windows". Click the "OK" button.
3. The setup for logging data has to be adjusted in the Labview software. This is done by scrolling down the page and making the following changes to the software settings: YSI byte count = 152; Bytes to write to YSI = 75; GPS port # = 2; pH offset = 30; Chlorophyll offset = 42; DO offset = 63; Turbidity offset = 38, Turbidity length = 5; Battery offset = 71; Conductivity offset = 23.
4. To start logging data click the small white arrow on upper left of screen. Enter a file name when the file dialog box appears, file name should be the name of the river system you are sampling and the date (i.e. Choptank040607). Click "Save". DATAFLOW is now operational and logging data.
5. To stop logging click the green "run" button on the display screen. This will tell the program to complete its routine and stop. You can also click the red "stop sign" button beside the green "run" button.

Downloading the Data after each run:

1. Plug a USB flash drive into the USB port located inside the Dataflow Box.
2. Click "File" in the DATAFLOW window then click "Open". Change "Files of type" to "All Files". Find the filename that was saved for that run.
3. Right click the filename, than choose "Copy".
4. Exit out of File window by hitting "Esc", than minimize the Dataflow window by clicking the "_" button in the top right corner.
5. Double click "My Computer", then double click "Removable Disk". Sometimes the drive will be titled as the name brand. i.e. USDISK 20X, Lexar Media, etc..
6. Right click inside the "Removable Disk" window and select "Paste".
7. After the file has been transferred to the Flash drive, click the "X" in the upper right corner.
8. Next shut the computer down by clicking the "start" button in the lower left corner, then click "Shut down".
9. Remove flash drive and close up Dataflow box.
10. Flip the horn switch, then the power switch off and unplug Dataflow box from battery.

Cruise tracks:

Cruise tracks will vary from one tributary to the next depending on its size and shape, and navigational hazards, but will either follow a 6ft. contour along each shore, or a "square wave" pattern traversing from shallow water to deeper water over the length of the tributary; stopping at 4 to 6 calibration stations.

Calibration stations:

At each calibration station collect a physical profile using a Hydrolab™, a Secchi depth measurement, a whole water sample for any CBL nutrients and chlorophyll filtering, and a PAR profile using a LiCor.

Hydrolab profile:

Collect the 0.5 m readings first. Record the exact minute that the 0.5 m readings are collected as the start time. You must also simultaneously collect the whole water sample for Chlorophyll and Nutrient analysis

at this time. Then lower the sonde to the bottom and take readings 0.3 m above the bottom and every 0.5 m or 1.0 m intervals to the surface depending on the total depth (see below).

If total depth is < 3 m.:

Hydrolab readings will be collected at 0.5 m from the surface and at 0.5 m intervals, and 0.3 m above the bottom.

If total depth is 3 m. or > than 3 m.:

Hydrolab readings will be collected at 0.5 m from the surface and at 1.0 m intervals, and 0.3 m above the bottom.

Whole water samples will be collected from the outflow of the DATAFLOW unit. Collection must be done simultaneously with the 0.5 m Hydrolab™ readings. A numbered 2 qt. bottle will be rinsed 3 times and filled to be used for CBL nutrient samples and a chlorophyll sample. All processed samples will be immediately placed on ice until delivery to the office

As conditions permit, CBL nutrient and chlorophyll filtering will begin as soon as possible. Filtrate will be collected from the PP units only. In addition to standard filtrate samples, 1 TSS (numbered) pad and 1 chlorophyll (unnumbered Whatman) pad will be submitted for analysis. For the Corsica River only, 1 PP (unnumbered Whatman) pads, 1 VSS/TSS (numbered) pad, 2 PC/PN pads, and 1 chlorophyll (unnumbered Whatman) pad will also be submitted for analysis.

Water Quality Mapping Procedures (Old Unit)

The following procedures should be followed when collecting data for the DATAFLOW project with the old unit.

Equipment Set up:

1. Attach stainless steel ram to boat, prior to launching boat, using pre-drilled holes thru the port side transom of the boat with two bolts, two lock washers, and two nuts provided. Securely tighten with a 15/16" wrench or other suitable tool.
2. Attach depth finder transducer bracket to ram by inserting metal rod up thru hole in splash plate making sure that pointed side of transducer is facing the bow (front) of boat. Also make sure the transducer is below boat hull and water line. Securely tighten setscrew with 9/16" wrench or other suitable tool.
3. Launch research vessel.
4. After launching insert gray PVC pipe with attached Rule 1100 Cartridge aerator pump model 205FC down thru stainless steel ram and securely tighten with lever on ram.
5. Connect 1" diameter black hose to ram pump with a hose clamp and attach other end of hose to intake end of white PVC flow meter pipe with a hose clamp.
6. Attach YSI meter stand (white board with two clamps) to the back wall of the research vessel with two bolts and accompanying washers and nuts.
7. Take YSI 9 pin cable from DATAFLOW box and attach to YSI sonde.
8. Unscrew calibration cup from YSI and attach gray YSI Flow-cell.
9. Place YSI sonde into YSI stand with the YSI Flow-cell up.
10. Connect shorter 1" diameter black hose to YSI Flow-cell **IN** and secure with a hose clamp.
11. Connect other end of hose to output end of flow meter pipe and secure with hose clamp.

12. Connect the other 1" diameter black hose to YSI Flow-cell **OUT** and leave the other end of hose hanging over the starboard side or back of the boat.
13. Prime the DATAFLOW ram by removing Rule 1100 pump head and pouring water into pipe until full. Replace Rule 1100 pump head.

External power hook up:

1. Dataflow computer, GPS map/sounder, flow meter, and horn are powered by 1 rechargeable 12-volt gel cell battery and 3 rechargeable 7.4-volt batteries- 2 in the CPU and 1 in the display. Dataflow ram pump assembly is also powered by 1 rechargeable 12 volt gel cell battery or thru a 12 volt DC outlet installed on research vessel..
2. Place one 12-volt gel cell battery into the white dataflow box in the compartment provided alongside the computer and GPS. Connect red and white wires from battery to red and white wires in box.
3. Lift off top panel of DATAFLOW box by pulling up on the two handles. If it is not already connected, plug in AC/DC adaptor to the 175 watt DC to AC power inverter. Put other end of cord (labeled to CPU) up thru hole in top panel and connect to DC- IN jack on the "CPU".
4. Insert "dual serial I/O PC Card" into the PC card slot if it isn't in there.
5. Put top panel of DATAFLOW box back in place.
6. Place one 12 volt gel cell battery in a secure place on research vessel for use as a spare or may be used to power ram pump (Rule 1100 cartridge aerator pump model 205FC) if research vessel is not equipped with a 12 volt DC power supply outlet.
7. Connect black electrical cord from Rule 1100 live well pump to a 12 volt DC outlet on research vessel or wire pump directly to 12 volt DC gel cell battery. A non gel cell battery will also work if it is necessary
8. Flip alarm horn switch to off.
9. Flip DATAFLOW power switch to on.

Data logging:

1. Turn on instrument power by pushing power button on the Garmin GPSmap168 Sounder and holding the power button down until unit turns on. Turn on CPU by pushing and holding down power button until unit beeps. When "display ready" light turns green on (about 1 minute) CPU you can turn on the display unit by pushing and holding down the power button until display turns on.
2. Flip flow meter alarm horn to on position when flow reaches 3.0 lpm on flow meter display.
3. Using the stylus (plastic pen in back of display) provided with the display, double tap the "DATAFLOW" icon. Tap ok when the next box appears, it should say "Labview for Windows".
4. The setup for logging data has to be adjusted in the Labview software. This is done by scrolling down the page and making the following changes to the software settings: YSI byte count = 152; Bytes to write to YSI = 75; GPS port # = 1; pH offset = 30; Chlorophyll offset = 42; DO offset = 63; Turbidity offset = 38, Turbidity length = 5; Battery offset = 71; Conductivity offset = 23.
5. To start logging data tap small white arrow on upper left of screen with stylus. Enter a file name when the file dialog box appears; file name should be the name of the river system you are sampling and the date (Severn040603). Tap "save". DATAFLOW is now operational and logging data.
6. To stop logging tap green "run" button on the display screen. This will tell the program to complete its routine and stop. You can also just tap the red "stop sign" looking button beside the green "run" button.
7. Close the program by tapping on the "X" in the top right corner of the display and shut down the computer by tapping the start button on the lower left of the display screen then tap shut down.
8. Turn off flow alarm horn, Turn off GPS/Sounder, turn off YSI power, and then turn off Ram pump.

Downloading the Data after each run:

1. Plug 3.5" USB floppy disk drive into the USB port located on the CPU.
2. Start up CPU and Display.
3. Insert blank 3.5" disk into disk drive. Make sure to label the disk the same as the saved file.
4. Double tap DATAFLOW icon on display screen.
5. Tap "ok" when the next box appears, it should say "Labview for windows".
6. On the DATAFLOW screen tap on "file" then tap "open". Change files of type to "all files". The latest files that were saved will open in the window.
7. On the display screen border below the power button is a button labeled "R-Button"; this is the same as the right click button on a mouse. Push this button while tapping the file that you wish to save. Another window will open. Go down to "send to" and tap on "3.5 floppy". The file should now be saved on the 3.5" floppy disk.
8. Check to make sure the file made it to the disk. Do not delete the file from the hard drive of the computer.
9. Shut down the computer and the display.

Charging the batteries:

1. The CPU and display batteries (7.4-volt batteries) can be charged by plugging in the AC/DC adaptor and hooking it up to the display and the CPU. It takes about 3 hours the recharge each of these batteries.
2. The 12-volt gel cell batteries can be charged with a 12-volt battery charger
3. The CPU and display batteries (7.4-volt batteries) will also charge while the DATAFLOW unit is operational as long as the batteries are installed in the CPU and the DATAFLOW unit is being powered by the 12 volt gel cell battery

Appendix 4. Photosynthetic Active Radiation Protocol - May 15, 2003

Underwater Photosynthetically Active Radiation (PAR, 400-700nm)

Downwelling light penetrating the water column (PAR) is measured underwater at several depths to calculate the light attenuation coefficient, K_d . Simultaneous deck and submersed PAR intensity measurements are taken to account for variability in incident surface irradiance due to changes in cloud cover. Data collected from this procedure may be used to estimate the depth of the photic zone.

1) Equipment: Manufactured by LI-COR, Inc.

- A. LI-192SA, flat cosine Underwater Quantum Sensor
- B. LI-190SA air (deck) reference sensor.
- C. Data Logger (LI-1000 or LI-1400)

2) Parameters:

- 1. EPARU_Z Downwelling PAR, measured underwater with sensor pointed up.
(μM , micromoles/second-meter² = μE , microEinsteins)
- 2. EPAR_S PAR measured in air, on board vessel or pier, recorded concurrently with each underwater depth reading (μM)
- 3. SDEPTH Sample depth at which PAR reading is recorded (meters)

3) Procedure:

- 1. PAR is determined from the sunny (or unshaded) side of a vessel or pier during daylight hours. Both deck and submersed probes must be away from the shadow of the vessel.
- 2. Check the sensor operation by connecting the deck sensor and underwater sensor to corresponding ports of the Li-Cor data logger, and turn the power on. Check battery level. Cover the sensor and check to see if the output is very near zero. Place the sensor under a light source to assure that it has a positive reading. A negative reading indicates that the polarity of the sensor is reversed, and is plugged into the cable backwards. A very positive or negative reading in the dark indicates a possible short in the cable or some other electrical short.

In the field, mount the deck sensor in a location which is level and unobstructed by shadows. Ensure that sensors are positioned properly on the deck sensor mounting and the lowering frame. Connect deck sensor and underwater sensor to corresponding ports of the sonde, and turn the power on.

- 3. Set instrument averaging constant to display results from previous 10 or 15 seconds.
- 4. Lower the frame until the sensor is just below the surface of the water. At a depth of 0.1 meter (~4 inches), simultaneously record the deck sensor and the underwater readings for the "surface" measurement. If wave action prevents this, take the initial reading at 0.5 meters. Depth of the underwater sensor diffuser below the surface of the water is determined with a calibrated pole or non-stretching rope.
- 5. Lower the frame and take subsequent measurements at depths appropriate to the monitoring location and purpose of the project (see below). Allow the instrument output to stabilize, at least for the averaging period, then record both deck and underwater readings at each depth.

The simultaneous deck and submersed readings are stored by pressing “Enter”. Each record will be stored with a time stamp which will flash on the data logger readout. Record this time. All readings can be subsequently retrieved at the end of the cruise.

Shallow Water Monitoring (Data Flow and Fixed Continuous Monitors)

LiCor readings will be collected from the sunny side of the boat; both deck (out of water) and underwater readings will be recorded simultaneously. Allow readings to stabilize before recording data. This normally takes several seconds.

If the total depth is < 3 m:

Record both deck and underwater readings at 0.10m and at 0.25m intervals until 10 % of first underwater reading is reached. **

If the total depth is equal to or > 3 m:

Record both deck and underwater readings at 0.10m and at 0.5m intervals until 10% of first underwater reading is reached.

** If depth is < 0.5m make sure to record at least 3 different depth readings.

Example: If total depth is 0.25m record data from 0.05m, 0.10m and 0.20m

4) Quality control

1. The deck cell should have the highest PAR value, and the underwater sensor output should decrease as the sensor is lowered.
2. Periodically check that sensors are linear and not out of calibration with respect to each other.
3. PAR sensors should be returned to LICOR, Inc. every year, prior to each field season.
4. Replicate PAR profiles are recommended to make sure readings are correct.

5. Reporting

Report the PAR values from the deck sensor and each underwater measurement under the following CIMS data base method codes:

- a. EPARU_Z F01: Flat cosine sensor LI-192SA
- b. EPAR_S F01: Deck (reference) sensor LI-190SA
- c. SDEPTH: Sample depth at which PAR reading is recorded, in meters

5) Light Attenuation (K_d) Calculations

To calculate the light attenuation coefficient (K_d), adjust each underwater PAR value by multiplying by the ratio of:

$$\frac{\text{Maximum EPAR}_S \text{ in profile}}{\text{EPAR}_S \text{ from that DEPTH}}$$

Using adjusted PAR values, calculate K_d by one of the methods below.

- 1) Correlation Coefficient: Plot the natural log of each adjusted PAR value on the x-axis vs. depth, in meters. The slope of the line times (-1) is K_d ; the y-intercept is the depth of the photic zone.

Raw data for this calculation can be retrieved from the CIMS Data Hub. Under CBP Water Quality Database, “click to get data” and select the “Light Attenuation Data”.

- 2) SAV 2-point Method: Calculate K_d from the (adjusted) PAR values from two different depths according to the equation:

$$K_d = - \left(\frac{\ln(\text{adjusted PAR deep}) - \ln(\text{adjusted PAR shallow})}{\text{Deep Depth} - \text{Shallow Depth}} \right), \quad \text{or}$$

$$K_d = \ln \frac{\text{adjusted PAR deep/adjusted PAR shallow}}{\Delta \text{Depth (m)}}$$

Calculated K_d using this method can be retrieved from the CIMS Data Hub (<http://www.chesapeakebay.net>). Under CBP Water Quality Database, “click to get data”, then select “Water Quality Data”. CIMS calculates K_d based on the SAV 2-point method and automatically adjusts the underwater values if air sensor values are present for each depth. PAR values are taken between the most consistent, shallowest, underwater depths and as close to 1 meter below the surface that is available. In most tributary mid-channels the calculator will select values from Depths = 0.1 and 1.0 meters. In Maryland mainstem, values are usually from Depths = 0.5 and 1.5 meters; in Virginia mainstem, K_d data are calculated with Depths = 1.0 and 2.0 meters.

The CIMS K_d calculator will not calculate K_d for any sampling event with only one PAR reading in the first 2 meters of the water column, or if underwater PAR values are negative.

Appendix 5. YSI 6600EDS/V2 Calibration and Post-Calibration Procedures (Continuous Monitoring)

C. Trumbauer, J. Zimmerelli

MD DNR

Revised 5/20/2008

I. SET UP

- A. Remove calibration cup, and set up the YSI with probes facing up.
- B. If using a rapid-pulse type dissolved oxygen probe, trim the DO membrane with an x-acto knife, as closely as possible to the o-ring. Any extra pieces of the membrane hanging off may attract fish or crabs.
- C. Attach non-EDS wipers to the chlorophyll and turbidity probes. Always use an orange wiper for the chlorophyll probe and a white wiper for the turbidity probe. Use a black wiper for turbidity probes manufactured after Dec 2007. Remember to align the screw on the wiper with the flat side of the probe post. Be sure the sponge portion is touching the probe firmly, but is not smashed down flat.
- D. Remove waterproof cap from the 9-pin sonde connector and attach calibration cable from laptop to sonde. Inspect connector for cleanliness, bent pins, etc.
- E. Launch Ecowatch, or EcoWatch DCP and select SONDE from the COMM menu. Choose COM 1 when prompted to select COM port.
- F. Next, type “menu” at the # prompt
- G. Select SYSTEM, then DATE AND TIME, then TIME.
- H. Enter the correct time. (Obtain the time by consulting a calibrated ConMon watch, or dialing 410.844.1212) **All times must be entered in Eastern Standard Time (EST).**
- I. Return to main menu. Select REPORT.
- J. Select only the following parameters to be reported:
 - Temp C, SpCond ms/cm, salinity, depth (if equipped), DO %Sat., DO mg/l, pH, pH mV, Turbid NTU, Chl ug/L, Fluorescence, (BGA cells/ml, and BGA RFU – if installed,) and Battery Voltage

II. QUICK CHECKS

- A. From the MAIN MENU, select RUN, and then DISCRETE. Enter SAMPLE INTERVAL as 4 seconds, and then RUN SAMPLE. Observe the DO% reading and make sure that the D.O. shows a high to low trend (you may ignore the first two readings.) – only necessary when using rapid pulse DO technology).
- B. Allow the sonde to continue in discrete mode. Press “3” to activate wipers. Check to see that both wipers complete their cycle by wiping twice clockwise and then once counter-clockwise, parking at 180° from the sensor.
- C. While the sonde is still in discrete mode, place a spare orange wiper over the turbidity optic (without touching it) and make sure that it jumps to a high number. Remove wiper and wait for turbidity reading to decrease back to zero (12 sec.)
- D. While the sonde continues in discrete mode, place your finger over the chlorophyll optic (without touching it) and make sure that it jumps to a high number. Remove finger and wait for turbidity reading to decrease back to zero (24 sec.)
Note: Corresponding times (12 and 24 sec.) depend upon settings in the advance menu for probe time constants.

III. CHLOROPHYLL

- A. Prepare 0.5 mg/l Rhodamine WT solution from the stock solution (if needed.)
 - a. Retrieve 100 mg/l Rhodamine stock solution from refrigerator.

- b. Warm to room temperature by placing in a warm water bath for 5 – 10 minutes.
- c. Rinse clean 1000-ml volumetric flask 3 times with DI.
- d. Fill 1000-ml volumetric halfway with DI water.
- e. Using pipette bulb, rinse 5-ml volumetric pipette once with stock solution. Release rinse into sink **with water running** to allow waste to be flushed.
- f. Pipette exactly 5.0 ml of the stock solution into 1000 ml volumetric flask using a volumetric pipette.
- g. Dilute 1000 ml flask to the line with DI to form a 0.5 mg/l Rhodamine WT solution. Cap tightly, invert and swirl several times to homogenize.
- h. Return stock solution to the refrigerator.
- i. Rinse all waste in the sink and flush with plenty of water.

NOTE: *0.5 mg/l solution is unstable, light sensitive, and must be used **within 24 hours**. Store solution in the dark.*

- B. Remove calibration cup from sonde and rinse probes with DI water.
- C. Fill a clean, dry calibration cup 3/4 full with DI water. Be sure to use a tall calibration cup with a black base. Place probes down into DI water making sure temperature probe is immersed.
- D. Return to main menu. Select CALIBRATE, then OPTIC C - CHLOROPHYLL, then CHL UG/L, then TWO POINT. Enter zero (0) as the first standard.
- E. Press “3” to engage wipers. Note if wipers “park” 180° from the optical sensor. Check for air bubbles over optics. Repeat if necessary.
- F. After wipers have completed wiping cycle, allow readings to stabilize for at least 24 seconds. Record chlorophyll blank concentration. Press enter, and record calibrated chlorophyll blank concentration.
- G. Rinse a clean, empty calibration cup, with a black base, 3 times, and then fill it ¾ full with the 0.5 mg/l Rhodamine solution
- H. Using lab thermometer, note temperature of Rhodamine standard.
- I. Place probes down into standard making sure temperature probe is immersed.
- J. Using temperature reading obtained in step H, look up corresponding Chlorophyll value from Chlorophyll/Temperature chart in the folder. Enter this concentration (*e.g.* 113) as the second point in the calibration and press Enter.
- K. Press “3” to engage wipers again. Check for air bubbles over optics. Repeat if necessary.
- L. After wipers have completed wiping cycle, allow readings to stabilize for at least 24 seconds. Record chlorophyll concentration and temperature. Press Enter, and record calibrated chlorophyll concentration.

IV. TURBIDITY

- A. All turbidity calibrations must use the tall version of the calibration cup.
- B. Fill a clean, dry calibration cup 3/4 full with DI water. Be sure to use a calibration cup with a black base.
- C. Rinse probes with DI water and place sonde probes down into DI water, making sure that the temperature probe is submerged.
- D. Return to main menu. Select CALIBRATION, then TURBIDITY.
- E. Select 2 POINT. Enter the first standard as zero (0).
- F. Press “3” to engage wipers. Check for air bubbles over optics. Repeat if necessary.
- G. After wipers have completed wiping cycle, allow readings to stabilize. Record turbidity concentration. Press enter, and record calibrated turbidity concentration.
- H. Remove probes from DI water. Dry off Turbidity probe and temperature probe with a cotton swab or Kim-wipe. This will prevent the turbidity standard from becoming diluted.
- I. Gently fill a clean, dry calibration cup about 2/3 full with clean 123 NTU solution to minimize the amount of bubbles in the standard.

- J. Lower Turbidity probe down into calibration cup enough to immerse the temperature probe.
- K. Enter second standard as 123. (NOTE: At the end of 2009 sampling season, YSI changed the standard so that 2010 standard is 126.)
- L. Press “3” to engage wipers. Note if wipers “park” 180° from the optical sensor. Check for air bubbles over optics. Repeat if necessary.
- M. After wipers have completed wiping cycle, allow readings to stabilize. Record turbidity concentration. Press enter, and record calibrated turbidity concentration.

V. SPECIFIC CONDUCTANCE

- A. Attach open-ended calibration cup securely to meter and rinse probes 3 times with DI water.
- B. Rinse probes 3 times with conductance standard to be used. (6668 $\mu\text{S}/\text{cm}$ or 24820 $\mu\text{S}/\text{cm}$)
- C. Set meter upright with probes facing up. Fill calibration cup with standard until the standard level is above conductivity block and temperature probe. If any air bubbles are apparent in the conductivity block, remove them by shaking meter gently or dislodging them with a cotton swab, or a pipette.
- D. Select CONDUCTIVITY, then SPECIFIC CONDUCTANCE from the CALIBRATION menu.
- E. Enter the conductance of the standard *in mS/cm*. Example: 6668 μS = 6.668 mS.
- F. Press Enter when readings have stabilized. Record readings before and after calibration.
- G. Return to main menu.
- H. Select ADVANCED then CAL CONSTANTS. Record Conductivity Cell Constant.

VI. pH

- A. With calibration cup securely attached to meter, rinse probes 3 times with DI water.
- B. Rinse probes 3 times with pH 7 standard.
- C. Set meter upright with probes facing up. Fill calibration cup with standard until the standard level is above pH and temperature probes.
- D. Return to main menu. Select CALIBRATION then pH, then 2-POINT.
- E. Enter 7, and allow at least 60 seconds for meter to stabilize.
- F. When readings have stabilized press Enter, record pH before and after calibration, as well as the temperature and pH mV.
- G. Rinse probes 3 times with DI water.
- H. Rinse probes 3 times with pH 10 or pH 4 standard (depending on the expected pH of the waterway to be sampled)
- I. Fill calibration cup with standard until the standard level is above conductivity block and temperature probe.
- J. Enter appropriate buffer (10 or 4) at prompt, and allow at least 60 seconds for meter to achieve thermal equilibrium.
- K. When readings have stabilized press Enter, record pH before and after calibration, as well as the temperature and pH mV.
- L. Calculate pH slope by subtracting the pH 7 mV from pH 10 mV. Ensure that slope is within range.
- M. Remove pH standard, and rinse probes with DI water.
- N. Now is a good time to remove the small turbidity wiper, and replace it with the large brush wiper that is used for deployment.

VII. DEPLOYMENT SET-UP

- A. Turn on the following parameters by selecting REPORT from the Main Menu:
 - For EDS sondes: Date, Time, Temp, SpCond, Sal, DO%, DOmg/l, DOchrg, Depth, pH, pH mV, Turb, Chl, Fluor, Batt.
 - For V2 sondes: Date, Time, Temp., Sp. Cond., Sal., Depth, pH, pH mV, Turb., Chl., Fuor.,

- DO %, DO mg/L, Batt.
- For V2 sondes with Blue-Green Algal probes: Date, Time, Temp., Sp. Cond., Sal., Depth, pH, pH mV, Turb., Chl., Fluor., DO %, DO mg/L, BGA cell/ml, BGA RFU, Batt.

Return to main menu. Initiate data logging by selecting RUN, then *UNATTENDED SAMPLE*. Enter INTERVAL (15 minutes), START DATE, START TIME, DURATION (365 days), FILE and SITE. **Note:** START TIME should always be 59 seconds prior to a quarter-hour. For example: HH: 59:01, HH:14:01, HH:29:01, HH:44:01.

- B. Record File Name, Start Date/Time, Sampling Interval, Free Disk Space (in kb), and Battery Life (in days) in log book. Make sure stop date is 1 year after start date.
- C. If Battery life is less than 45 days, change batteries; If Free Disk space is less than 100 kb, then delete all files by returning to the main menu, selecting FILE, then DELETE ALL FILES. *Note: You should check to make sure that all files have already been successfully uploaded onto the server before deleting them.*
- D. Exit menu back to # prompt and disconnect sonde cable.
- E. Screw on waterproof connector cap.

VIII. DISSOLVED OXYGEN – Rapid Pulse (Ideally performed day before deployment)

- A. Closely observe DO membrane to ensure that it is free of water, scratches, and nicks. Remove any water carefully with cotton swab. If scratch or nick is apparent, DO membrane must be replaced. (Also, inspect the silver anodes and make sure that neither is tarnished. If anodes are tarnished, remove membrane and resurface with provided sanding disks.)
- B. Wipe dry the metal thermistor – a wet thermistor can indicate an artificially low temperature reading due to evaporation.
- C. Place probe guard onto instrument, being careful of the DO membrane, and exposed pH probe.
- D. Wrap moist towel around the probe-end of the instrument to create a saturated-air environment.
- E. Place instrument in a cooler that is cracked open to allow it to be in equilibrium with the atmosphere.
- F. Allow air to become water saturated and meter to come to thermal equilibrium (at least 30 minutes.)
- G. After enough time has elapsed, select *CALIBRATE* from the main menu, and then *DISSOLVED OXYGEN*.
- H. Next choose DO SAT%. Take current Barometric Pressure from a reliable barometer in the room. Log in Barometric Pressure in mm Hg and press <Enter>.
- I. Meter will automatically perform calibration. Record barometric pressure, temperature, meter DO before and after calibration, DO Sat% before and after calibration, and true DO value, as calculated from pressure/temperature chart. **Record DO charge.** If DO charge <25 or >75, DO probe needs to be serviced.
- J. Return to main menu. Select *ADVANCED* then *CAL CONSTANTS*. Record DO Gain.
- K. NOTE: It is important to allow DO Teflon membrane to adjust for a 24-hour period after a new one is installed before calibration; otherwise you will have an erroneous DO calibration.

IX. DISSOLVED OXYGEN – Optical ROX probe (Ideally performed day before deployment)

- A. Install black wiper onto titanium wiper shaft using the proper allen wrench. Ensure that setscrew is tightened onto the flat, keyed portion of the shaft.
- B. Connect calibration cable to sonde. Open Ecowatch program and choose option 1 (Run), then Discrete Sample, and run. Next choose 3 to initiate wipers and ensure that wiper is functioning properly and parks 180° from Optical DO matrix.
- C. Place probe guard onto instrument, being careful of the exposed pH probe.

- D. Place sonde into 5-gallon bucket of 100% air saturated water (air pump must be on for at least 1 hour prior to calibration.)
- E. After the above requirements are met, select *CALIBRATE* from the main menu, and then *Optical DISSOLVED OXYGEN*.
- F. Next choose DO SAT%, then *1-POINT*. Take current Barometric Pressure from a reliable barometer in the room. Log in Barometric Pressure in mm Hg and press <Enter>.
- G. Data will start to scroll down screen. Hit the #3 key to initiate wiper sequence to ensure no air bubbles are interfering with measurement. When the wiper sequence is finished look for the readings to stabilize and record (temperature, Barometric Pressure, ODO %, ODO conc.) then hit <ENTER> and record the ODO% and conc. changes made by the sonde. Next, record the true DO value, as calculated from pressure/temperature chart.
- H. Return to main menu. Select *ADVANCED* then *CAL CONSTANTS*. Record ODO Gain.
- I. Leave sonde in water and allow air pump to run overnight.

X. DISSOLVED OXYGEN CHECK (performed the morning of the deployment)

- A. Verify DO calibration by connecting sonde cable to sonde, accessing menu and selecting *VIEW FILES* then *QUICK VIEW*. Note the most recent several samples, and check that the readings are stable.
- B. Record the temperature, DO (mg/L), DO %, DO charge
- C. Check the barometric pressure, and record the true DO from the temperature/pressure chart.
- D. If samples are consistent and accurate within 0.2 mg/L of true DO value according to chart, do not recalibrate meter.
- E. If samples are not within 0.2 mg/L of true DO, recalibrate meter according to *step VII-H*. Since the meter is already in a saturated air environment, you need not wait for equilibrium. Record changes in calibration log.
- F. If samples are greater than 0.5 mg/L of true DO, do not recalibrate and do not deploy instrument until DO issue is resolved.

XI. BGA CALIBRATION

- A. All turbidity calibrations must use the tall version of the calibration cup.
 - B. Fill a clean, dry calibration cup 3/4 full with DI water. Be sure to use a calibration cup with a black base.
 - C. Rinse probes with DI water and place sonde probes down into DI water, making sure that the temperature probe is submerged.
 - D. Return to main menu. Select *CALIBRATION*, then *BGA*.
 - E. Select *1 POINT*. Enter the standard as zero (0).
 - F. Press “3” to engage optics. Repeat if necessary.
- G. After wipers have completed wiping cycle, allow readings to stabilize. Record BGA concentrations cells/mL and RFU's. Press *ENTER* and record calibrated BGA concentrations. (Cells/mL and RFU values are to be recorded in the Calibration notes section of the Calibration Log).

POST CALIBRATION

XII. Notes

- A. During Post Calibration, the idea is to preserve the condition of the meter after deployment. Thus it is important *not* to clean the sonde or remove any fouling that may have been deposited. *However, you may carefully clean the sides of the probes, as long as you preserve the fouling on the actual sensors themselves.*
- B. Inspect each probe on the sonde. Using the selections available at the bottom of the

Rhodamine calibration chart page, give each probe a “fouling grade.” This is noted for each probe on the far right of the calibration sheet. If a probe or sonde exhibits particularly severe fouling, you may wish to take a picture of it with the digital camera.

- C. Because most meters will exhibit biological fouling or sediment buildup on the probes after a deployment, they will tend to contaminate any standards with which they come in contact. Therefore, a second set of “dirty” standards are used to perform post calibrations.
- D. Clean standards are typically rotated into “dirty” standards at the end of each field week. When the “dirty” standards become significantly contaminated with biological material or dirt, they should be discarded and replaced with the clean standards. New, clean standards are then prepared.

XIII. Dissolved Oxygen (ideally performed the day after retrieving meter)

- A. If meter was wrapped in moist towel following retrieval, make sure membrane and thermistor are dry, keep towel on meter and allow meter to come to thermal equilibrium in a stable environment – usually overnight. (Rapid Pulse Technology) Allow meter to continue to log data while coming to equilibrium. Connect sonde cable to sonde and access last several readings according to **step X, line A in the Calibration procedures**. For Optical DO sensor, make sure that Sonde has been placed in a bucket of 100% air saturated water and allowed to equilibrate to temperature and pressure (usually left over night.) Skip to step C.
- B. If there was a problem - meter malfunction, batteries died, etc. - you may run a post calibration by accessing menu, selecting Run, then Discreet Sample using a sample interval of 120 sec. For Optical DO sensor, run sonde in discrete mode at 4 sec. intervals and look for readings to stabilize, record data and check against chart.
- C. Check barometric pressure using reliable barometer.
- E. Record temperature, barometric pressure, DO (mg/l), DO Sat%, and DO Charge.
- F. Also record true D.O. as read from temperature and pressure chart. If the D.O. is more than 0.5 mg/L off from the chart D.O. reading, make a large note on the post calibration sheet.
- G. Use this opportunity to record the depth post-cal also, if applicable.
- H. Stop logging by selecting RUN, UNATTENDED SAMPLE, then STOP LOGGING.
- I. At this time, upload the data from the last deployment. In the main menu, select FILE, then QUICK UPLOAD.
- J. Select PC6000, and press enter. This will automatically upload the most recent deployment data onto the computer. It will be stored under the folder, Ecowatch.
- K. After uploading the latest data set from the YSI, remove the towel and probe guard from the meter.
- L. Remove the EDS “clean-sweep” or brush wiper from the turbidity probe, and replace with a small gray or white non-brushing wiper. Place the EDS brush wiper in a beaker with water and light soap to soak.
- M. The meter is now ready to complete the post-calibration process, or it can be stored in a calibration cup with DI until the post-calibration can be completed.

XIV. CHLOROPHYLL, TURBIDITY, AND BLUE GREEN ALGAE (BGA)

- A. From the Main Menu, select Report. Select only the following to be reported:
Temp C, SpCond ms/cm, DO mg/l, pH, pH mV, Turbid NTU, Chlug/l, BGA cells/mL
- B. Do not rinse probes.
- C. Make sure to use the tall calibration cups.
- D. Fill a clean, dry calibration cup $\frac{3}{4}$ full with DI water. Be sure to use a calibration cup with a black base.
- E. Place probes down into DI water being sure to submerge the temperature probe.
- F. Select RUN from the main menu. Select DISCREET SAMPLE.

- G. Change SAMPLE INTERVAL to 4 seconds.
- H. Select START SAMPLING. Wipers should activate. If not, press “3” to activate wipers manually. Observe if wipers park 180° from optic sensors. Note this in log book.
- I. Place and hold lab thermometer in DI water until temperature reading is stable. Record thermometer temperature in logbook.
- J. After wipers have completed cycle, record instrument temperature, chlorophyll, turbidity, and BGA zero readings once they have stabilized.
- K. For Chlorophyll and Turbidity respectively follow steps C-J with calibration standards (Rhodamine and Turbidity).

XV. SPECIFIC CONDUCTANCE

- A. Attach open-ended calibration cup securely to meter.
- B. **Gently** rinse probes 3 times with conductance standard that was used to calibrate the meter. Take care not to dislodge fouling from conductance block, as the goal is to read conductance “as is.”
- C. Set meter upright with probes facing up. Fill calibration cup with “dirty” conductance standard until the standard level is above conductivity block and temperature probe. Pour standard gently down the side of calibration cup to prevent dislodging dirt or growth from probes. If any air bubbles are apparent in the conductivity block, remove them by shaking meter gently or dislodging them with a cotton swab.
- D. Run a Discrete Sample with a Sample Interval of 4 seconds.
- E. Record conductance when readings have stabilized.

XIV. pH

- A. With calibration cup securely attached to meter, **gently** rinse probes 3 times with DI water, taking care not to dislodge any fouling from the pH probe.
- B. Gently rinse probes 3 times with pH 7 buffer.
- C. Set meter upright with probes facing up. Gently pour standard down the inside of the calibration cup until the buffer level is above pH and temperature probes.
- D. Run a Discrete Sample with a Sample Interval of 4 seconds.
- E. Allow at least 30 seconds for meter to stabilize.
- F. When readings have stabilized, record pH, pH mV and temperature.
- G. Gently rinse probes 3 times with DI water.
- H. Gently rinse probes 3 times with pH 10 or pH 4 buffer (use whichever buffer used to calibrate instrument.)
- I. Gently pour pH 10/pH 4 buffer down the inside of the calibration cup until the standard level is above pH and temperature probes.
- J. Run a Discrete Sample with a Sample Interval of 4 seconds.
- K. Allow at least 60 seconds for meter to stabilize.
- L. When readings have stabilized, record pH, pH mV and temperature, and calculate pH slope by subtracting the pH 7 mV from pH 10 mV.

Meter should now be cleaned and stored for next deployment.

Figure 5 on the following page is an example of a Continuous Monitoring Calibration Sheet.

Figure 5: Continuous Monitoring Calibration Sheet

<p>YSI 6600 CALIBRATION LOG</p> <p>CALIBRATION</p> <p>Date _____ Time _____</p> <p>Location _____</p> <p>Deployment site: _____ RESET? Y N</p> <p>Initials _____</p> <p>Depth offset _____ Calibrated? Y N Temp Check? _____</p> <p>Specific Conductance</p> <p>Sp. Cond. Std. _____ μS/cm</p> <p>Meter reads _____ μS/cm</p> <p>changed to _____ μS/cm</p> <p>Cond. Cell Const. _____ (Range 4.6 - 5.45)</p> <p>pH 7</p> <p>Temperature _____ $^{\circ}$C</p> <p>Meter pH reads _____</p> <p>changed to _____</p> <p>pH mV _____ mV (Range 0 \pm 50)</p> <p>pH 10</p> <p>Temperature _____ $^{\circ}$C</p> <p>Meter pH _____</p> <p>changed to _____</p> <p>pH mV _____ mV (Range -180 \pm 50)</p> <p>Slope (pH7 mV - pH10 mV) _____ (Range 165 - 180)</p> <p>Chlorophyll (2-point)</p> <p>Chlorophyll zero _____ \rightarrow _____ μg/L</p> <p>Temperature _____ $^{\circ}$C</p> <p>Rhodo WT equivalent _____ μg/L</p> <p>Meter reads _____ \rightarrow _____ μg/L</p> <p>Wiper parks 180 deg. from sensor? YES NO</p> <p>Turbidity (2-point)</p> <p>Turb zero _____ \rightarrow _____ NTU</p> <p>Turb Std _____ NTU</p> <p>Meter reads _____ NTU</p> <p>changed to _____ NTU</p> <p>Wiper parks 180 deg. from sensor? YES NO</p> <p>Dissolved Oxygen</p> <p>Temperature _____ $^{\circ}$C new membrane? Y N</p> <p>Bar. Pressure _____ mm Hg Hi to Low? Y N</p> <p>Chart D.O. _____ mg/L</p> <p>Meter D.O. _____ mg/L</p> <p>changed to _____ mg/L</p> <p>D.O. Saturation _____ %</p> <p>changed to _____ % Wiper park? Y N</p> <p>D.O Charge _____ (Range 25 to 75)</p> <p>D.O. Gain _____ (Range 0.8 - 1.7)</p> <p>PROGRAMMING</p> <p>Parameters: (circle) Date Time Temp SpC Sal DO% DO DOch pH</p> <p>Set time to: _____ : _____ EST pH mV Turb Chl Fluor</p> <p>Log to filename _____ Batt Depth</p> <p>Start Date / Time / interval _____ / _____ / _____ min</p> <p>Started Logging YES NO</p> <p>Free Disk Space _____ kb (delete if < 100kb)</p> <p>Battery Life/Volts _____ / _____ changed Y N</p> <p>(change if batt life < 45 days)</p> <p>FIELD DATA</p> <p>Date _____ Time(s) _____</p> <p>Initials _____</p> <p>Add'l Samples? _____</p> <p>FIELD NOTES</p>	<p>METER _____ Page # _____</p> <p>POST CALIBRATION</p> <p>Date _____ Time _____</p> <p>Location _____</p> <p>Initials _____</p> <p>Depth Offset _____ Depth _____</p> <p>Stopped Logging? YES NO Upload? YES NO</p> <p>Specific Conductance</p> <p>Sp. Cond. Std. _____ μS/cm Fouling Grade _____</p> <p>Meter reads _____ μS/cm</p> <p>Temperature</p> <p>Thermometer temp _____ $^{\circ}$C YSI temp: _____ $^{\circ}$C</p> <p>pH 7</p> <p>Temperature _____ $^{\circ}$C Fouling Grade _____</p> <p>Meter pH _____</p> <p>pH mV _____ mV</p> <p>pH 10</p> <p>Temperature _____ $^{\circ}$C</p> <p>Meter pH _____</p> <p>pH mV _____ mV</p> <p>Slope _____</p> <p>Chlorophyll (2-point)</p> <p>Chlorophyll zero _____ μg/L Fouling Grade _____</p> <p>Temperature _____ $^{\circ}$C</p> <p>Chlorophyll Std _____ μg/L</p> <p>Meter reads _____ μg/L</p> <p>Wiper parks 180 deg. from sensor? YES NO</p> <p>Turbidity (2-point)</p> <p>Turb zero _____ NTU Fouling Grade _____</p> <p>Turb Std _____ NTU</p> <p>Meter reads _____ NTU</p> <p>Wiper parks 180 deg. from sensor? YES NO</p> <p>Dissolved Oxygen</p> <p>Temperature _____ $^{\circ}$C Fouling Grade _____</p> <p>Bar. Pressure _____ mm Hg</p> <p>Chart D.O. _____ mg/L</p> <p>Meter D.O. _____ mg/L</p> <p>D.O. Saturation _____ %</p> <p>D.O Charge _____</p> <p>Battery _____ changed YES NO</p> <p>DATA SET COMPARISON</p> <table border="1" style="width:100%; border-collapse: collapse;"> <thead> <tr> <th></th> <th>old</th> <th>new</th> <th>Discrete</th> </tr> </thead> <tbody> <tr> <td>meter</td> <td></td> <td></td> <td></td> </tr> <tr> <td>time</td> <td></td> <td></td> <td></td> </tr> <tr> <td>Temp.</td> <td></td> <td></td> <td>$^{\circ}$C</td> </tr> <tr> <td>Sp. Cond</td> <td></td> <td></td> <td>μS/cm</td> </tr> <tr> <td>Salinity</td> <td></td> <td></td> <td>ppt</td> </tr> <tr> <td>D.O.</td> <td></td> <td></td> <td>mg/l</td> </tr> <tr> <td>pH</td> <td></td> <td></td> <td></td> </tr> <tr> <td>Turb.</td> <td></td> <td></td> <td>NTU</td> </tr> <tr> <td>Chloro</td> <td></td> <td></td> <td>μg/L</td> </tr> <tr> <td>total depth =</td> <td>_____ m</td> <td>_____ m</td> <td>secchi = _____ m</td> </tr> <tr> <td>sample depth =</td> <td>_____ m</td> <td></td> <td></td> </tr> </tbody> </table> <p>_____ <i>calibration notes</i></p> <p>DO Check</p> <p>Temp _____</p> <p>B.P. _____</p> <p>Chart _____</p> <p>Meter _____</p> <p>DO % _____</p> <p>Charge _____</p> <p>Re-Cal? Y N</p>		old	new	Discrete	meter				time				Temp.			$^{\circ}$ C	Sp. Cond			μ S/cm	Salinity			ppt	D.O.			mg/l	pH				Turb.			NTU	Chloro			μ g/L	total depth =	_____ m	_____ m	secchi = _____ m	sample depth =	_____ m		
	old	new	Discrete																																														
meter																																																	
time																																																	
Temp.			$^{\circ}$ C																																														
Sp. Cond			μ S/cm																																														
Salinity			ppt																																														
D.O.			mg/l																																														
pH																																																	
Turb.			NTU																																														
Chloro			μ g/L																																														
total depth =	_____ m	_____ m	secchi = _____ m																																														
sample depth =	_____ m																																																


Appendix 6. YSI 6600/V2 Calibration, Daily Check, and Post-Calibration Procedures (Water Quality Mapping)

J. Strong

Revised: May 2010

Calibration

1. SET UP

- A. Remove waterproof cap from the 9-pin sonde connector and attach sonde cable from laptop to the sonde.
- B. Take a spare Hydrolab battery and attach it to the connector on the laptop.
- C. Launch “Ecowatch” and select the sonde icon  from the TOOLBAR menu.
- D. Choose *COM 1* (or sometimes *COM 4* depending on which laptop you use) when prompted to select COM port then press <Enter>.
- E. Type **menu** at the # prompt and select *SYSTEM*.
- F. Select *Date & Time*, then select *Time*.
- G. From a **reliable** time source, such as the radio controlled clock or the phone operator, enter correct time of day in **Eastern Standard Time**, then press <Enter> simultaneously with correct time. Time has now been set.
- H. Return to the main menu by pressing <Esc>.
- I. Next select *Report*.
- J. Select **the following** parameters **prior to calibration**:
 - Time, Temp C, SpCond mS/cm, Sal ppt, pH, pH mV,
 - Turbidity NTU, Chl ug/L, Chl RFU, ODO Sat%, ODO mg/l,
 - Battery volts.
- K. Press Esc until you are back to the main menu.

2. Dissolved Oxygen

- A. Fill a clean 5 gallon bucket 2/3 full with tap water. Sparge the water with an aquarium pump and air-stone for at least two hours prior to calibration.
- B. Remove calibration cup from sonde and inspect ODO probe to ensure that the optical sensor is free of scratches, chips, or other major damage.
- C. Place a YSI probe guard onto sonde.
- D. Place sonde into the 5 gallon bucket for at least 30 minutes before calibrating. Make sure that the ODO probe and temperature probe are fully submerged. Position sonde in bucket so that the air bubbles do not contact probes.
- E. From the main menu, select *CALIBRATE* then *OPTIC-O DISSOLVED OXY*.
- F. Next choose *ODO SAT%* then *ONE POINT*. Take current Barometric Pressure from a reliable barometer in the room. Log in Barometric Pressure in mmHg and press <Enter>.
- G. Allow ODO% to stabilize for at least 30 seconds. Record temperature, barometric pressure, chart DO value (obtained from pressure/temperature chart), meter ODO mg/l and ODO Sat%. Press <Enter> and record adjusted ODO mg/l and ODO Sat%. Press <Enter>.
- H. Return to the Calibrate menu by pressing <Esc>.

3. Chlorophyll

- A. Prepare 0.5 mg/l Rhodamine WT solution from stock solution.
 - 1) Retrieve 100 mg/l Rhodamine stock solution from refrigerator.
 - 2) Allow stock solution to reach ambient temperature using a warm water bath
 - 3) Rinse clean 1000-ml volumetric flask 3 times with DI.
 - 4) Fill 1000-ml volumetric flask halfway with DI water.
 - 5) Using a volumetric pipette, pipette exactly 5.0 ml of the stock solution into 1000 ml volumetric flask
 - 6) Bring 1000 ml flask to the line with DI to form a 0.5 mg/l Rhodamine WT solution. Cap tightly, invert and swirl several times to homogenize.
- B. Fill a clean calibration cup (the taller one) with **black top** attached 3/4 full with DI water. Remove probe guard and place probes down into DI water allowing at least three inches between probes and the bottom of the calibration cup.
- C. Select *OPTIC C - CHLOROPHYLL*, from the Calibrate menu, then *CHL UG/L*, then *TWO POINT*. Enter "0" as the first standard. Press <Enter>.
- D. Check optics for air bubbles. If air bubbles exists, **gently** raise the sonde up and down in the solution until air bubbles are gone.
- E. Allow readings to stabilize and record chlorophyll blank concentration. Press <Enter>, and record calibrated chlorophyll blank concentration. Press <Enter> again.
- F. Rinse calibration cup (the taller one) 3 times with Rhodamine solution, then fill cup $\frac{3}{4}$ full with the 0.5 mg/l Rhodamine solution.
- G. Using lab thermometer, record temperature of Rhodamine standard in the calibration cup.
- H. Dry probes with Kim-wipes then place probes down into Rhodamine standard allowing at least three inches between probes and the bottom of calibration cup.
- I. Using temperature reading obtained in step G, look up corresponding Chlorophyll value from Chlorophyll/Temperature chart in the folder. Enter this concentration (e.g. 22°C = 113ug/l) as the second point in the calibration and press <Enter>.
- J. Check for air bubbles over optics. If air bubbles exist, **gently** raise the sonde up and down in the solution until air bubbles are gone.
- K. Allow readings to stabilize. Record chlorophyll concentration and temperature. Press <Enter> and record calibrated chlorophyll concentration. Press <Enter> again.
- L. Return to the Calibrate menu by pressing <Esc>.

4. Turbidity

- A. Fill a clean calibration cup (the taller one) with **black top** attached 3/4 full with DI water.
- B. Rinse probes with DI and place probes down into calibration cup allowing at least three inches between probes and the bottom of the calibration cup.
- C. From the Calibrate menu select *TURBIDITY*, then *2 POINT*.
- D. Enter the first standard as "0". Press <Enter>.
- E. Check for air bubbles over optics. If air bubbles exists, **gently** raise the sonde up and down in the solution until air bubbles are gone
- F. Allow readings to stabilize. Record turbidity concentration. Press <Enter> and record calibrated turbidity concentration. Press <Enter> again.

- G. Remove probes from calibration cup and dry off all probes with a Kim-wipe. This will prevent the turbidity standard from becoming diluted.
- H. Fill a **clean, dry** calibration cup (the taller one) with **black top** attached 3/4 full with clean 126 NTU solution. Carefully pour the solution down the inner wall of the calibration cup to minimize any air bubbles.
- I. Place probes down into calibration cup allowing at least three inches between probes and the bottom of the calibration cup.
- J. Enter second standard as 126. Press <Enter>.
- K. Check for air bubbles over optics. If air bubbles exist, **gently** raise the sonde up and down in the solution until air bubbles are gone.
- L. Allow readings to stabilize. Record turbidity concentration. Press <Enter> and record calibrated turbidity concentration. Press <Enter> again.
- M. Return to the Calibrate menu by pressing <Esc>.

5. Specific Conductance

- A. Attach open-ended calibration cup securely to sonde and rinse probes 3 times with DI water.
- B. Rinse probes 3 times with specific conductance standard 12900 μ S/cm.
- C. Set meter upright with probes facing up. Gently swirl clean 12900 μ S/cm standard and fill calibration cup until the standard level is above all of the probes. If any air bubbles are apparent in the conductivity block, remove them by shaking meter gently or dislodging them with a cotton swab.
- D. Select *CONDUCTIVITY*, then *SP COND* from the Calibrate menu.
- E. Enter the conductance of the standard **in mS/cm**.
Ex: 12900 μ S/cm = 12.90 mS/cm. Press <Enter>.
- F. Allow readings to stabilize. Record specific conductance reading in μ S/cm and press <Enter>.
- G. Record calibrated specific conductance reading in μ S/cm. Press <Enter> again.
- H. Return to Calibrate menu by pressing <Esc>.

6. pH

- A. With calibration cup securely attached to meter, rinse probes 3 times with DI water.
- B. Rinse probes 3 times with pH 7 buffer.
- C. Set meter upright with probes facing up. Fill calibration cup with **clean** pH 7 standard.
- D. Select *PH* from the calibrate menu, then *2-POINT*.
- E. Enter “7” as the 1st point and press <Enter>. Allow at least 60 seconds for meter to stabilize. If readings fail to stabilize, try unplugging the laptop from the power source and pull YSI stand away from the wall.
- F. When readings have stabilized record temperature and pH reading. Press <Enter> and record calibrated pH and pHmV reading. Press <Enter>.
- G. Rinse probes 3 times with DI water. Then rinse 3 times with pH 10 buffer.
- H. Fill the calibration cup with **clean** pH 10 buffer.
- I. Enter 10 as the 2nd point and press <Enter>, allow at least 60 seconds for meter to stabilize.
- J. When readings have stabilized record temperature and pH reading. Press <Enter>, record calibrated *pH* and *pHmV* reading. Press <Enter>.
- K. Return to the Main menu by pressing <Esc>
- L. Select *Report*, then unmark *pHmV* by pressing “C”.
- M. Press <Esc> until asked to *Exit menu (Y/N)?*, then press “Y”.


DAILY CHECK

Day before each run: Set up YSI V2 to be checked the following morning by rinsing probes with DI. Place probe guard onto YSI V2 and place in a clean 5 gallon bucket filled 2/3 full with tap water, with submerged airstone and air pump running. Position sonde in the bucket so that the air bubbles do not contact probes.

Morning of run:

- A. Take a spare Hydrolab battery and attach it to the connector on the laptop.
- B. Attach sonde cable to sonde in 5 gallon bucket and launch *Ecowatch* as you would to calibrate.
- D. Type "menu" at the # prompt, then select *Report*.
- E. **MAKE SURE THAT ONLY THE FOLLOWING PARAMETERS ARE CHECKED UNDER THE REPORT MENU:**
 - Time, Temp C, SpCond. mS/cm, Sal ppt, pH, Turb., Chl ug/L, Chl RFU, ODOsat %, ODO mg/L, and Battery volts.
- F. Return to the Main menu by pressing <Esc> and select *Run*, then *Discrete Sampling*, then *Start Sampling*.
- G. Allow readings to stabilize for at least 30 seconds. Record Temperature, Barometric Pressure, Chart DO mg/L (from pressure/temperature chart), meter ODO mg/l, and ODO% Saturation.
Refer to "Ranges for Daily Check" page if meter ODO is off by +/- 0.2mg/L from chart DO. Remove sonde from bucket and remove probe guard.
- H. Fill a clean calibration cup (the taller one) with **black top** attached 3/4 full with DI water.
- I. Place probes down into calibration cup allowing at least three inches between probes and the bottom of the calibration cup.
- J. Check optics for air bubbles. If air bubbles exist, **gently** raise the sonde up and down in the solution until air bubbles are gone.
- K. Record Chlorophyll and Turbidity "0" once readings have stabilized. If Chlorophyll "0" is off by 1µg/L or if Turbidity "0" is off by 2 NTU, re-calibrate using the procedures listed in the Calibration section.
- L. Attach a clean, dry open-ended calibration cup to the sonde. Rinse calibration cup and probes three times with clean 12900µS/cm specific conductance standard. Place sonde in ring stand with probes facing up. Fill calibration cup with clean 12900µS/cm specific conductance standard. Wait for meter to stabilize and record specific conductance reading. Re-calibrate specific conductance if meter is off by +/- 645µS/cm.
- M. Rinse probes three times with DI then three times with pH 7 buffer.
- N. Pour clean pH 7 buffer into calibration cup, wait until readings stabilize, then record temperature and pH 7 reading. If readings fail to stabilize, try unplugging the laptop from the power source and pull YSI stand away from the wall.
- O. Rinse probes three times with DI then three times with pH 10 buffer.
- P. Pour clean pH 10 buffer into calibration cup, wait until readings stabilize, then record temperature and pH 10 reading.
- Q. Recalibrate pH 7 and pH 10 if either value is off by +/- .2 units

POST CALIBRATION

- A. Set YSI V2 up like you would for “*Day before each run*” procedure in Daily Check section. Place sonde into the 5 gallon bucket for at least 30 minutes before post calibrating.
- B. Remove waterproof cap from the 9-pin sonde connector and attach sonde cable from laptop to the sonde.
- C. Take a spare Hydrolab battery and attach it to the connector on the laptop.
- D. Launch “Ecowatch” and select the sonde icon  from the TOOLBAR menu.
- E. Choose *COM 1* (or sometimes *COM 4* depending on which laptop you use) when prompted to select COM port then press <Enter>.
- F. Type **menu** at the # prompt and select *REPORT*.
- G. Select **the following** parameters to be post calibrated:
 - **Time, Temp C, SpCond mS/cm, Sal ppt, pH, pH mV, Turbidity NTU, Chl ug/L, Chl RFU, ODO Sat%, ODO mg/l, Battery volts.**
- H. Return to the Main menu by pressing <Esc> and select *Run*, then *Discrete Sampling*, then *Start Sampling*.

1) Dissolved Oxygen

- A. Allow ODO% to stabilize for at least 30 seconds. Record temperature, barometric pressure, chart DO value (obtained from pressure/temperature chart), meter ODO mg/l and ODO Sat%.
- B. Remove sonde from bucket and remove probe guard.

2) Chlorophyll and Turbidity

- A. Fill a tall clean **black top** calibration cup $\frac{3}{4}$ full with DI water. Place probes down into DI water allowing at least three inches between probes and the bottom of the cup.
- B. Check optics for air bubbles. If air bubbles exist, **gently** raise the sonde up and down in the solution until air bubbles are gone.
Allow readings to stabilize. Record chlorophyll and turbidity "0" value.
- C. Rinse calibration cup 3 times with 0.5 mg/l Rhodamine WT solution (obtained from step 3A in the Calibration procedure), then fill a tall clean cup $\frac{3}{4}$ full with the 0.5 mg/l Rhodamine solution.
- D. Wipe probes dry with a kim-wipe. Place probes down into Rhodamine standard allowing at least three inches between probes and the bottom of calibration cup.
- E. Check optics for air bubbles. If air bubbles exist, **gently** raise the sonde up and down in the solution until air bubbles are gone.
- F. Record Chlorophyll value, temperature, and Rhodamine equivalent value (obtained from Chlorophyll/Temperature chart in folder) after readings have stabilized.
- G. Remove sonde from calibration cup, rinse probes with DI and dry all probes with a kim-wipe. Fill a clean, tall, dry calibration cup with black top $\frac{3}{4}$ full with 126 NTU standard.
- H. Place probes down into Turbidity standard allowing at least three inches between probes and the bottom of the cup.
- I. Check optics for air bubbles. If air bubbles exist, **gently** raise the sonde up and down in the solution until air bubbles are gone.
- J. Record Turbidity value after readings have stabilized.

3) Specific Conductance

- A. Attach open-ended calibration cup securely to sonde.
- B. Rinse probes 3 times with DI then 3 times with 12900 μ S/cm conductance standard.
- C. Set meter upright with probes facing up. Fill calibration cup with clean 12900 μ S/cm conductance standard until the standard level is above conductivity block and temperature probe. If any air bubbles are apparent in the conductivity block, remove them by shaking meter gently or dislodging them with a cotton swab.
- D. Record specific conductance when readings have stabilized.

4) pH

- A. With calibration cup securely attached to sonde, rinse probes 3 times with DI water.
- B. Rinse probes 3 times with pH 7 buffer.
- C. Set meter upright with probes facing up. Pour **clean** pH 7 standard into the calibration cup until the buffer level is above pH and temperature probes.
- D. Allow at least 60 seconds for meter to stabilize. If readings fail to stabilize, try unplugging the laptop from the laptop from power source and pull YSI stand away from the wall.
- E. When readings have stabilized, record pH, pH mV and temperature.
- F. Rinse probes 3 times with DI water then 3 times with pH 10 buffer.
- G. Pour **clean** pH 10 standard into calibration cup until the standard level is above pH and temperature probes.
- H. Allow at least 60 seconds for meter to stabilize.
- I. When readings have stabilized, record pH, pH mV and temperature.
- J. Return to the Main menu by pressing <Esc>
- K. Select *Report*, then unmark pHmV by pressing "C".
- L. Press <Esc> until asked to *Exit menu (Y/N)?*, then press "Y".

Figure 6 on the following page is an example of a Water Quality Mapping calibration sheet.

Figure 6: Water Quality Mapping Calibration Sheet

Date					
Time					
Calibration Type: Cal, Post, Check					
River/Area Being Tested					
Set Time?	Yes	No	Yes	No	Yes
Initials					
DISSOLVED OXYGEN (mg/L)					
Temperature: °C					
Bar. Pressure: mmHg					
Chart D.O.: mg/L					
Meter D.O.: mg/L					
-Adjusted to: mg/L					
D.O. Saturation : %					
-Adjusted to:					
CHLOROPHYLL (µg/L)					
Chlorophyll zero: µg/L					
-Adjusted to: µg/L					
Temperature: °C					
Rhodo WT equivalent: µg/L					
Meter Reads: µg/L					
-Adjusted to: µg/L					
TURBIDITY (NTU)					
Turbidity zero:					
-Adjusted to:					
Turbidity standard:	126	126	126	126	126
Meter Reads:					
-Adjusted to:					
SPECIFIC CONDUCTANCE (µS/cm)					
Sp. Cond. Std.: µS/cm	12,900	12,900	12,900	12,900	12,900
Meter Reads: µS/cm					
-Adjusted to: µS/cm					
pH 7					
Temperature: °C					
Meter Reads:					
-Adjusted to:					
pH mV: (-50 to 50)					
pH 10					
Temperature: °C					
Meter Reads:					
-Adjusted to:					
pH mV: (-230 to -130)					
Notes:					

Appendix 7. Continuous Monitoring and Water Quality Mapping Filtering Methods
(Revised May 2009)

A. PARTICULATE SAMPLE FILTRATION, PROCESSING AND STORAGE

1. Chlorophyll

Chlorophyll samples are filtered in the same manner for all programs.

- a) For every depth sampled, clean a 47mm bell with deionized (DI) water. Set up unit for filtering. Be sure that there is a trap in line between the manifold and the vacuum source.
- b) Place a Whatman 47mm GF/F glass fiber filter pad (pore size = 0.7 μm) on the filter frit. Always use clean forceps when handling the filter pads.
- c) Mix sample thoroughly by agitating and shaking the sample bottle vigorously, then rinse graduated cylinder three times with sample.
- d) Agitate the sample again before measuring in the graduated cylinder. Fill graduated cylinder with sample and filter desired volume through filtration unit. Be sure to use a graduate that is close to the volume being filtered (ex: if you are only filtering 80 ml of sample use a 100 ml graduate). Keep the vacuum pressure below 10 inches of Hg (around 8" Hg is good).
- e) Filter sufficient volume of sample (50 - 1500 ml) to solidly color the filter pad.
- f) Record the total volume filtered on the foil square.
- g) Agitate the squirt bottle of MgCO_3 , as it settles rapidly. Add approximately 1 ml of MgCO_3 suspension (1.0 g MgCO_3 in 100 ml of DI water) to the last 25 ml of sample in the filtration bell.

NOTE: Samples for dissolved parameters are not to be collected from this filtrate.

- h) Using forceps (1 or 2 pair), fold filter in half with sample inside and remove filter pad.
- i) Place pad in pre-marked foil square, and carefully fold foil square in thirds, horizontally. Then fold the ends in to seal the filter inside. Be sure forceps do not touch sample residue on the filter pads, because the sample will adhere to the forceps.
- j) Be sure that foil square is marked with date, station, depth of sample, volume of sample filtered, and sample number.
- k) Place foil packet into zip-lock plastic bag or pad container. When sampling on the small boats or a land run place the foils in a bag or pad container in the ice chest and place them in the appropriately labeled bag in the Field Office freezer when you return to the office. The bags for the chlorophyll samples go in the bin marked CBL in the freezer.
- l) Record sample station number, date, volume filtered (L), depth (m), layer, start time, end time and field scientist sign-off on the chlorophyll volume sheet. Record the study code, submitter code, data category code and replicate number, if not already pre-filled in, on chlorophyll volume sheet. This sheet is submitted to the laboratory with the samples. When you return the samples to the Field Office freezer, place the volume sheet in the rack on the side of the freezer marked "Chlorophyll, CBL".

NOTE: The filter pads for chlorophyll samples should be exposed to as little direct sunlight as possible. Store as soon as possible.

2. Particulate Carbon/ Particulate Nitrogen (PC/PN)

PC/PN samples are filtered in the same manner for all programs.

- a) Follow steps A.1.a. through A.1.d. above setting up two 25 mm filter bells using two pre-combusted 25 mm GF/F filters (pore size = 0.7 μm). The PC/PN pads come from CBL.
- b) Filter 10-200 ml through each filter. Filter enough sample to leave noticeable color on the filter pad.
- c) Make sure filter is sucked dry and the same volume is filtered for both pads.
- d) Record the volume filtered (total volume through one pad - do not add the volumes for the 2 pads together) on the foil square.

NOTE: Samples for dissolved parameters are not to be collected from this filtrate.

- e) Using forceps, fold each filter in half.
- f) Place both filters in a foil square labeled with date, CBL sample number, station, sample layer, PC/PN, and volume filtered. Be sure that the pads are not overlapping in the foil square to keep them from freezing together.
- g) Fold the foil square as described in step A.1.i. above and then place folded foil in zip-lock bag or pad container, and put in the freezer (large boats) or in a cooler on ice (small boats & land).
- h) Upon return to the Field Office, place the foils in their appropriate zip-lock bag in the sample freezer and place the bag in the CBL bin. Put the completed CBL volume sheet in the rack on the side of the freezer marked "CBL".

3. Particulate Phosphorus/ Particulate Inorganic Phosphorus (PP/PIP)

- a) Follow steps A.1.a. through A.1.d. above setting up and rinsing two 47 mm filter bells and flasks. The filters used are two Whatman 47 mm GF/F filters (same pads we use for chlorophyll). These filters are Pre-Combusted and are received from CBL.
- b) Filter 50 ml of sample through each filter pad.
- c) Use the filtrate as an equipment rinse and discard.
- d) Then filter enough additional (another 50 - 450 ml) to leave a noticeable color on the filter pad.
- e) Record the total volume filtered through each pad being sure to add the 50 ml rinse water (total volume through one pad – do not add the volumes for the 2 pads together) on the foil square.
- f) Use this filtrate to fill up the tubes for the dissolved parameter analysis. See section B (Filtered dissolved nutrient sample collection) below.
- g) After collecting filtrate, make sure filter is sucked dry.
- h) Rinse the filter pad using at least three - 10 ml rinses of DI water, sucking the pad dry after each rinse.
- i) Using forceps, fold each filter in half.
- j) Place both filters in a foil square labeled with date, PP/PIP, CBL sample number, station, sample layer, and volume filtered (this is the total volume of sample through each pad, including the initial 50 ml rinse). Be sure that the pads are not overlapping in the foil square to keep them from freezing together.
- k) Fold the foil square as described in step A.1.i. above. Place foil square in zip-lock bag or pad container, and put in the cooler on ice until you return to the field office.
- l) Upon return to the Field Office, place the foils in their appropriate zip-lock bag in the sample freezer and place the bag in the CBL bin. Put the completed CBL volume sheet in the rack on the side of the freezer marked "CBL".

4. Total Suspended Solids/ Volatile Suspended Solids (TSS/VSS)

The instructions below apply to samples processed for TSS/VSS for Dataflow and Continuous Monitoring programs.

- a) Follow steps A.1.a. through A.1.d. above setting up and rinsing one 47 mm filter bell and flask. The filter used is a pre-combusted and pre-weighed 47 mm GF/F filters (pore size = 0.7 μm). The VSS pads come in individually numbered petri dishes from CBL. Remove one pad from its individual petri dish and place on the filter screen. Record the pad number from the petri dish on the TSS/VSS foil label in the space marked "Pad #".
- b) Filter 50 - 500 ml and filter through the filter pad leaving a noticeable color on the pad.
- c) Make sure filter is sucked dry and rinse the filter pad using at least three - 10 ml rinses of DI water, sucking the pad dry after each rinse. If the sample is very salty (e.g. Lower Chesapeake, Coastal Bays) you should rinse an extra 1-2 times.
- d) Using forceps, fold the filter in half. Place the filter in a foil square labeled with date, TSS/VSS, CBL sample number, station, sample layer, volume filtered, and VSS pad number.
- e) Fold the foil square as described in step A.1.i. above. Place foil square in zip-lock bag or pad container, and put in the cooler on ice until you return to the field office.
- f) Upon return to the Field Office, place the foils in their appropriate zip-lock bag in the sample freezer and place the bag in the CBL bin. Put the completed CBL volume sheet in the rack on the side of the freezer marked "CBL".

5. Total Suspended Solids (TSS) Only

The instructions below apply to samples processed for TSS only for Dataflow and Continuous Monitoring programs.

- a) Follow steps A.1.a. through A.1.d. above setting up and rinsing one 47 mm filter bell and flask. The filter used is a pre-weighed 47 mm GF/F filters (pore size = 0.7 μm). The TSS pads are individually numbered from CBL. Remove one pad from the petri dish pad container and place on the filter screen numbered side down (this will allow number to be visible when pad is folded after filtering).
- b) Filter 50 - 500 ml and filter through the filter pad leaving a noticeable color on the pad.
- c) Make sure filter is sucked dry and rinse the filter pad using at least three - 10 ml rinses of DI water, sucking the pad dry after each rinse. If the sample is very salty (e.g. Lower Chesapeake, Coastal Bays) you should rinse an extra 1-2 times.
- d) Using forceps, fold the filter in half. Place the filter in a foil square labeled with date, TSS, CBL sample number, station, sample layer, and volume filtered.
- e) Fold the foil square as described in step A.1.i. above. Place foil square in zip-lock bag or pad container, and put in the cooler on ice until you return to the field office.
- f) Upon return to the Field Office, place the foils in their appropriate zip-lock bag in the sample freezer and place the bag in the CBL bin. Put the completed CBL volume sheet in the rack on the side of the freezer marked "CBL".

B. DISSOLVED NUTRIENT SAMPLE FILTRATION & COLLECTION

NOTE: The filtrate collected for this sample must come from either the TSS/VSS or PP/PIP filtration set-up. If you cannot get enough water through these pads to fill all tubes, then use plain GF/F filters to get enough filtrate. The filtrate may not come from pads that are in contact with MgCO_3 (CHLA).

1. The following steps are to be completed for collection of all filtrate for the samples below:
 - a) Run 50 ml of sample water through the filter.
 - b) Use this 50 ml of filtrate to rinse the flask and then discard.

c) Run more sample water through the filter and collect in the flask.

2. Total Dissolved Nitrogen & Phosphorus (TDN/TDP)

- a) Rinse the TDN/P tube (30 ml borosilicate glass – tall skinny tube!) and cap three times with filtrate.
- b) Flick all remaining water droplets out of the test tube and cap.
- c) Rinse the 10 ml graduated cylinder three times with filtrate.
- d) Fill the graduated cylinder with 10 ml of filtrate.
- e) Carefully, pour the 10 ml of filtrate into the test tube and cap tightly.
- f) Store the test tube in the freezer.
- g) If on a land run or small boat, store the tubes on ice in a cooler and place in the Field Office freezer when you return from the field.

3. Nitrate, Nitrite, Ammonia, Orthophosphate

- a) Rinse the 3 like-numbered AA vials (4 ml polystyrene cups) and 3 caps three times with filtrate.
- b) Fill the AA vials with filtrate up to ridge where the caps are seated.
- c) Snap the caps on the vials. You should hear them snap twice to be fully seated.
- d) Store 3 AA vials in the freezer.
- e) If on a land run or small boat, store the tubes on ice in a cooler and place in the Field Office freezer and refrigerator when you return from the field.

C. QUALITY CONTROL SAMPLES (IF APPLICABLE)

1. Clean Check

The clean check is a two step process. First, clean, dry pads are analyzed as if they had been in contact with actual samples. Second, deionized water is filtered through a second set of pads in place of sample water.

- a) Place clean, dry pads in foils for appropriate parameters to be analyzed as if they had been used for real samples.
- b) Performed the same as A – C above, however, only deionized (DI) water is used. The volume filtered should be consistent with other volumes filtered on the run the clean check is being performed on.

Appendix 8. Nutrient Analytical Services Laboratory / Chesapeake Biological Laboratory Methods

All laboratory-measured parameters are analyzed at the University of Maryland's Chesapeake Biological Laboratory (CBL), Nutrient Analytical Services Laboratory. For details, refer to Appendix VII in the Quality Assurance Project Plan for the Maryland Department of Natural Resources Chesapeake Bay Water Quality Monitoring Program Chemical and Physical Properties Component for the Period July 1, 2010 - June 30, 2011 (Cole and Parham 2010).

Documents included in Appendix VII are:

- *Determination of Dissolved Inorganic Nitrate plus Nitrite (NO₃+NO₂) in Fresh/Estuarine/Coastal Waters Using Cadmium Reduction, 13-Jan-09*
- *Determination of Dissolved Inorganic Nitrate plus Nitrite (NO₃+NO₂) in Fresh/Estuarine/Coastal Waters Using Enzyme Catalized Reduction, 13-Jan-09*
- *Determination of Dissolved Inorganic Ammonium (NH₄) in Fresh/Estuarine/Coastal Waters, 19-Mar-09*
- *Determination of Dissolved Inorganic Nitrite (NO₂) in Fresh/Estuarine/Coastal Waters, 12-Mar-09*
- *Determination of Dissolved Inorganic Orthophosphate (PO₄) in Fresh/Estuarine/Coastal Waters, 19-Feb-09*
- *Determination of Total Dissolved Nitrogen (TDN) in Fresh/Estuarine/Coastal Waters Using Alkaline Persulfate Digestion of Nitrogen to Nitrate and Measured Using Cadmium Reduction, 13-Apr-10*
- *Determination of Total Dissolved Phosphorus (TDP) in Fresh/Estuarine/Coastal Waters Using Alkaline Persulfate Digestion of Phosphorus to Orthophosphate (PO₄), 13-Apr-10*
- *Determination of Total Dissolved Nitrogen (TDN) in Fresh/Estuarine/Coastal Waters Using Alkaline Persulfate Digestion of Nitrogen to Nitrate and Measured Using Enzyme Catalized Reduction, 13-Apr-10*
- *Determination of Total Particulate Phosphorus (TPP) and Particulate Inorganic Phosphorus (PIP) in Fresh/Estuarine/Coastal Waters, 1-Dec-09*
- *Determination of Total Suspended Solids (TSS) and Total Volatile Solids (TVS) in Fresh/Estuarine/Coastal Waters, 2008*
- *Determination of Dissolved Organic Carbon (NPOC), Total Organic Carbon, and Dissolved Inorganic Carbon in Fresh/Estuarine/Coastal Waters Using High Temperature Combustion and Infrared Detection, 8/12/2009*
- *Determination of Carbon and Nitrogen in Particulates and Sediments of Fresh/Estuarine/Coastal Waters, Plant and Animal Tissue and Soils Using Elemental Analysis, 2008*
- *Spectrophotometer Determination of Chlorophyll a in Waters and Sediments of Fresh/Estuarine/Coastal Areas, 3/31/2010*
- *Determination of Silicate from Fresh, Estuarine, Coastal Waters Using the Molybdosilicate Method on the AquaKem 250 Analyzer 8/14/2009*

Current versions of NASL methods documents are maintained on-line by NASL and may be accessed at the following URL: <http://nasl.cbl.umces.edu/Methods.htm>.

Appendix 9. Continuous Monitoring Parameters

C. Trumbauer, C. Heyer, M. Trice

Revised: 5/29/2007

Parameter	Format/Units	Field Name	Method Code
Date	mmddyyyy	SAMPLE_DATE	
Time	hh:mm:ss (24 hr clock – EST)	SAMPLE_TIME	
Station		STATION	
Tributary		WATER_BODY	
Segment		CBSEG_2003	
Sonde (YSI Sonde Name)	Variable Length (e.g. “Gina” or Serial Number)	SONDE	
Latitude	Decimal Degrees (NAD83)	LATITUDE	
Longitude	Decimal Degrees (NAD83)	LONGITUDE	
Sample Depth Value	meters (+)	SAMPLE_DEPTH*	
Sample Depth Reference	BS = Floating Below Surface B = Bottom*** S = Surface ***	LAYER_CODE*	
Water Column Depth	meters (+)	TOTAL_DEPTH**	
Battery Voltage	Volts	BATT	
Water Temperature	°C	WTEMP	F01
Specific Conductance	ms/cm	SPCOND	
Salinity (From YSI Sonde)	Ppt	SALINITY	F01
Dissolved Oxygen Saturation	%	DO_SAT	F01 for 6562 F02 for 6150
Dissolved Oxygen Concentration	mg/l	DO	F01 for 6562 F02 for 6150
pH	Su	PH	F01
Turbidity	NTU	TURB_NTU	F01
Fluorescence	% FS (FS = Full Scale)	FLUOR	
Pre-calibrated Total Chlorophyll	µg/l	TCHL_PRE_CAL	
Post-calibrated Chlorophyll <i>a</i>	µg/l	CHLA	

* The SAMPLE_DEPTH should always be used in conjunction with the LAYER_CODE for descriptive information on where the sonde is located in the water column.

** The TOTAL_DEPTH only applies to fixed depth sonde and is adjusted to account for the distance the sonde is fixed above the bottom.

*** S and B layer codes are used to distinguish samples where there is both a surface and bottom instrument deployed at the same location.

Appendix 10. Water Quality Mapping Parameters

W. Nelson, C. Heyer, M. Trice

Revised: 1/7/2004

Parameter	Format/Units	Field Name	Method Code
Date	Mmddyyyy	SAMPLE_DATE	
Time	hh:mm:ss (24 hr clock – EST)	SAMPLE_TIME	
Cruise Track	AAAmddyyyy (AAA = 3 Letter Trib Code)	STATION	
Tributary		WATER_BODY	
Primary Segment		PRI_SEG	
Sonde (YSI Sonde Name)	Variable Length (e.g. “Gina” or Serial Number)	SONDE	
Latitude	Decimal Degrees (NAD83)	LATITUDE	
Longitude	Decimal Degrees (NAD83)	LONGITUDE	
Sample Depth Value	meters (+)	SAMPLE_DEPTH*	
Sample Depth Code	BS = Floating Below Surface AB = Fixed Above Bottom VP = Vertical Profile	LAYER_CODE*	
Water Column Depth	meters (+)	TOTAL_DEPTH	
Boat Speed	knots	BOAT_SPEED	
Battery Voltage	volts	BATT	
Water Temperature	°C	WTEMP	F01
Specific Conductance	ms/cm	SPCOND	
Salinity (From YSI Sonde)	ppt	SALINITY	F01
Dissolved Oxygen Saturation	%	DO_SAT	F01
Dissolved Oxygen Concentration	mg/l	DO	F01
pH	su	PH	F01
Turbidity	NTU	TURB_NTU	F01
Fluorescence	% FS (FS = Full Scale)	FLUOR	
Pre-calibrated Total Chlorophyll	µg/l	TCHL_PRE_CAL	
Post-calibrated Chlorophyll <i>a</i>	µg/l	CHLA	

* The SAMPLE_DEPTH should always be used in conjunction with the LAYER_CODE for descriptive information on where the sonde is located in the water column.

Appendix 11. Continuous Monitoring and Water Quality Mapping Error Codes

C. Trumbauer, W. Nelson, C. Heyer, M. Trice, B. Cole

Revised: 5/27/2009

Category	Code	Description	Immediate Data Impacts	Suggested Uses
Comments	CAB	Algal Bloom - No Sample Taken	Comment - No Impact on Data Value	Field Observation
Comments	CAS	Algal Sample Taken (Sample #)	Comment - No Impact on Data Value	Field Observation
Comments	CBF	Biofouling	Comment - No Impact on Data Value	
Comments	CCS	Calibration Sample Taken	Comment - No Impact on Data Value	Water Quality Mapping Specific
Comments	CDB	Disturbed Bottom	Comment - No Impact on Data Value	Field Observation
Comments	CFK	Fish Kill	Comment - No Impact on Data Value	Field Observation
Comments	CLF	Flow Low	Comment - No Impact on Data Value	Water Quality Mapping Specific
Comments	CSC	Site Location Change	Comment - No Impact on Data Value	Continuous Monitoring Specific
Comments	CSW	Salinity Calibrated at the Wrong Level	Comment - No Impact on Data Value	
Comments	CTC	Time Change	Comment - No Impact on Data Value	NA to Data Post 2003
Comments	CTF	Temperature Probe Failure	Comment - No Impact on Data Value	
Comments	CTS	Time Skip	Comment - No Impact on Data Value	Improper Time Recording By Sonde
Comments	CTW	Turbid Water	Comment - No Impact on Data Value	Field Observation
Comments	CWD	Instrument at Wrong Depth (Depth Value)	Comment - No Impact on Data Value	Continuous Monitoring Specific
General Probe Codes	GBO	Blocked Optic	Data Invalid - Hide Data Value	Extreme Single-Point Turbidity and Chlorophyll Spikes
General Probe Codes	GNV	Negative Value	Data Invalid - Hide Data Value	
General Probe Codes	GPC	Post Calibration Out of Range	Data Invalid - Hide Data Value	

Appendix 11. Continuous Monitoring and Water Quality Mapping Error Codes continued...

Category	Code	Description	Immediate Data Impacts	Suggested Uses
General Probe Codes	GPF	Probe Failure	Data Invalid - Hide Data Value	
General Probe Codes	GSC	Seal Compromised	Data Invalid - Hide Data Value	
General Probe Codes	GWL	Wiper Lost	Data Invalid - Hide Data Value	
General Probe Codes	GWM	Wiper Malfunction	Data Invalid - Hide Data Value	Evident Biofouling on Optics
Non-Probe Codes	NIR	Instrument Removed	Data Invalid - Hide Data Value	Instrument Removed from Water for Short Duration (Within a Deployment)
Non-Probe Codes	NIS	Invalid Data Due To Incorrect YSI Setup	Data Invalid - Hide Data Value	
Non-Probe Codes	NND	No Data	Data Invalid - Hide Data Value	Missing Data Values
Non-Probe Codes	NNF	Ram Clogged / No Flow	Data Invalid - Hide Data Value	Water Quality Mapping Specific
Non-Probe Codes	NOW	Instrument Out of the Water	Data Invalid - Hide Data Value	
Non-Probe Codes	NPF	Power Failure	Data Invalid - Hide Data Value	
Non-Probe Codes	NQR	Data Rejected Due To QA/QC Checks	Data Invalid - Hide Data Value	
Specific Probe Codes	PDP	DO Poisoning (Anoxia)	Data Invalid - Hide Data Value	Membrane Degraded Due to Low DO
Specific Probe Codes	PSW	Salinity Calibrated at the Wrong Level	Data Invalid - Hide Data Value	

Appendix 12. Continuous Monitoring Data Verification and Management Procedures

C. Trumbauer, M. Trice

Revised: 5/29/2007

1. Open raw .DAT file in Ecowatch and rearrange parameters into the following order: DATE, TIME, BATT, DEPTH, TEMP, SP.COND, SALINITY, DO%, DOCONC, PH, TURBIDITY, CHL, FLUOR
2. Using the file naming convention of the station three-letter designation followed by the two-digit year and the two-digit week, export files from Ecowatch in .CDF format (e.g., JUG0718.cdf would be the 18th week of 2007).
3. Using Microsoft Excel, open the .CDF file, choosing comma delimited when prompted to identify the delimiter type.
4. Delete all data that were taken when the sonde was not in the water on station (i.e., transit time from the field office to the station). Use the logbooks to determine this time.
5. If the data is from a station where the instrument is floating one meter from the surface, then delete all data in the DEPTH field (it is understood to be 1 meter at all times). If there is no column for depth, be sure to insert one in between the BATT and TEMP columns.
6. Run the QA/QC macro by clicking the “REARRANGE CONTMON DATA” button on the “DNR CONTMON” tab of the macro dialog (Figure A13_1). When this button is clicked, the existing data columns are rearranged, new data columns are added, and error code columns are added. Error code fields are designated by the suffix “_A”. The columns are ordered as follows:

SAMPLE_DATE
SAMPLE_TIME
STATION
SONDE
TOTAL_DEPTH
TOTAL_DEPTH_A
BATT
BATT_A
WTEMP
WTEMP_A
SPCOND
SPCOND_A
SALINITY
SALINITY_A
DO_SAT
DO_SAT_A
DO
DO_A
PH
PH_A
TURB_NTU
TURB_NTU_A
FLUOR
FLUOR_A
TCHL_PRE_CAL

TCHL_PRE_CAL_A
 CHLA
 CHLA_A
 COMMENTS

7. Examine the data from the previous deployment, if applicable, and note any overlapping data records resulting from the three-way *in situ* match-up. The overlapping record(s) should then be deleted from the more recent deployment to ensure that the data are continuous from deployment to deployment.

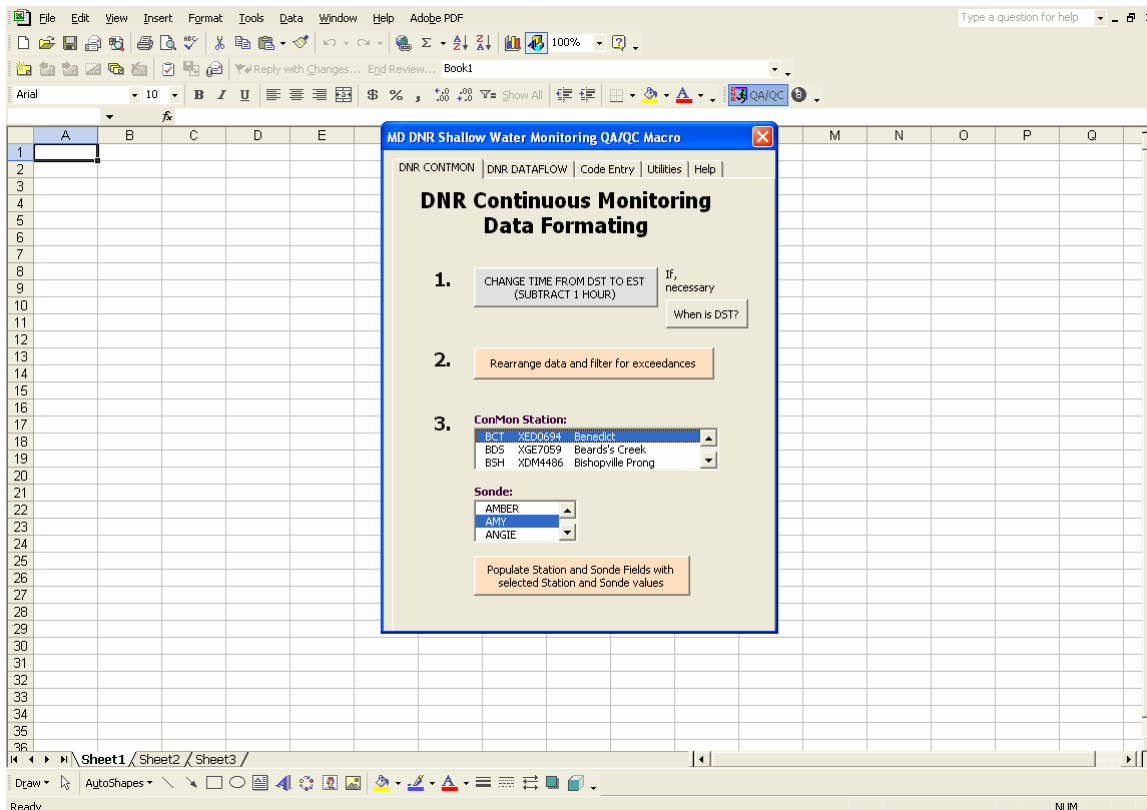


Figure A12_1. Screenshot of the QA/QC macro for continuous monitoring data formatting.

8. When clicked, the “REARRANGE CONTMON DATA” button also flags negative values with the GNV error code, flags missing data with the NND error code, highlights values outside of set tolerance levels in red (Table A12_1), and returns an overview summary of exceedances (Figure A12_2). Tolerance levels are purposefully large to accommodate the diversity of data collected throughout Maryland’s Coastal and Chesapeake Bays.

Table A12_1. Tolerance levels automatically checked by the QA/QC macro.

Parameter	Tolerance
BATT	<4 and >20
WTEMP	>35
SPCOND	>50
Salinity	>35
DO_SAT	>200
PH	>17.5
DO	<2 and >10.5
TURB	>150
FLUOR	>50
TCHL_PRE_CAL	>200

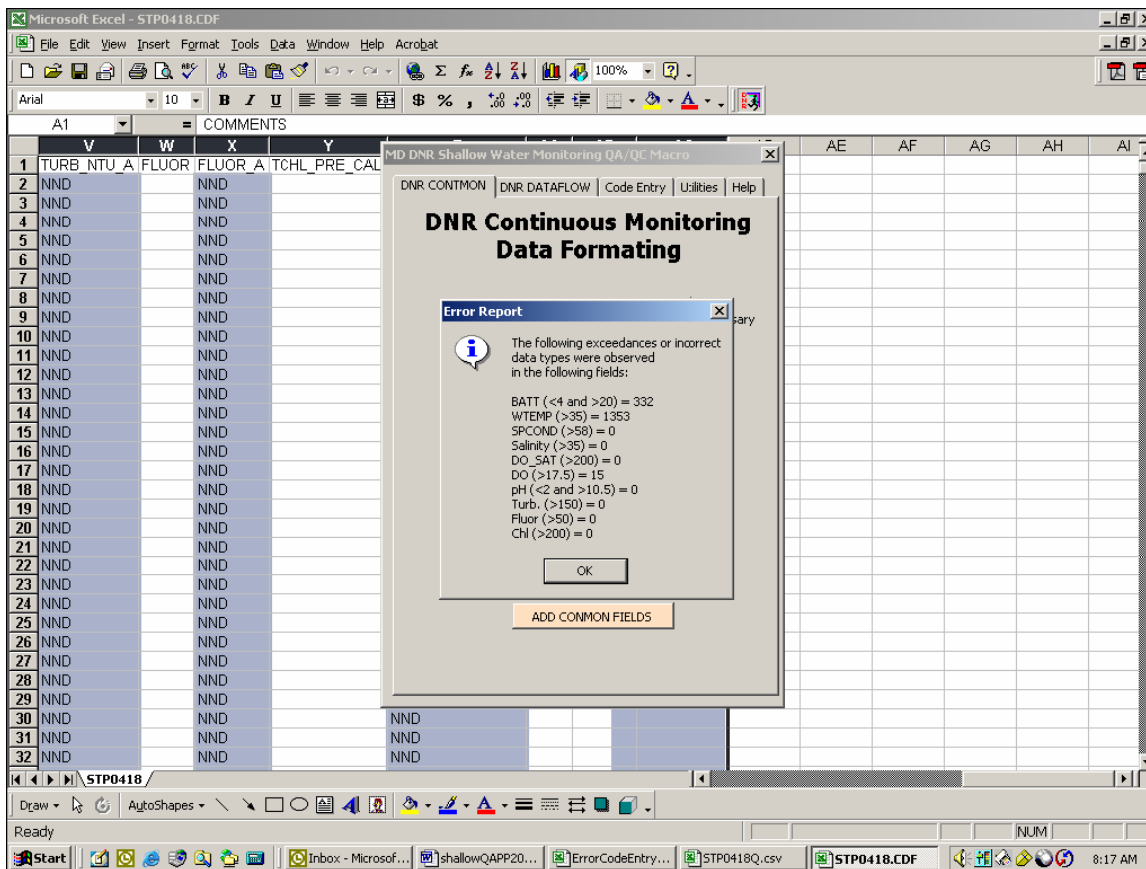


Figure A12_2. Screenshot of exceeded tolerances.

9. Select the Station and Sonde information for the deployment being reviewed into the macro dialog box and click “ADD COMMON FIELDS”. This inserts the station name and sonde name into each record.

10. Flagging Values with the QA/QC Macro:

Sound data management practices dictate that data should never be deleted. As such, we employ a data management system in which all original data values are retained in the database, but erroneous data are masked with an error code (see Appendix 11 for list of error codes). Each parameter value field also has an error code field associated with it and is designated with the suffix “_A” (e.g., DO_A). Error codes should only be written to the error code fields. Comments should only be written to the COMMENTS field. Because the data file is comma separated, a comma should never be used to separate comments in the COMMENTS field; a semi-colon can be used instead. The following steps outline how the QA/QC Macro can be used to insert error codes and comments.

- a) Go to the “CODE ENTRY” tab of the QA/QC macro to access all of the tools necessary to enter error codes and comments in selected cells (Figure A12_3).
- b) Use the “SELECT CELLS” box to select the cells of the spreadsheet in which you want to enter error codes or comments.
- c) After the cells have been selected, choose a “PREDEFINED CODE” or “CUSTOM CODE” by selecting the appropriate button.

NOTE: Custom codes should only be used for comments. They should never be used for error codes because the database only recognizes predefined error codes.

- d) Select either a “PROBE SPECIFIC”, “GENERAL PROBE”, “NON-PROBE” or “COMMENTS” code by clicking the appropriate radio button, or if applicable, type in a custom comment.
- e) Select the appropriate code and click the “ENTER CODE” button.
- f) Repeat Steps b-e as necessary.

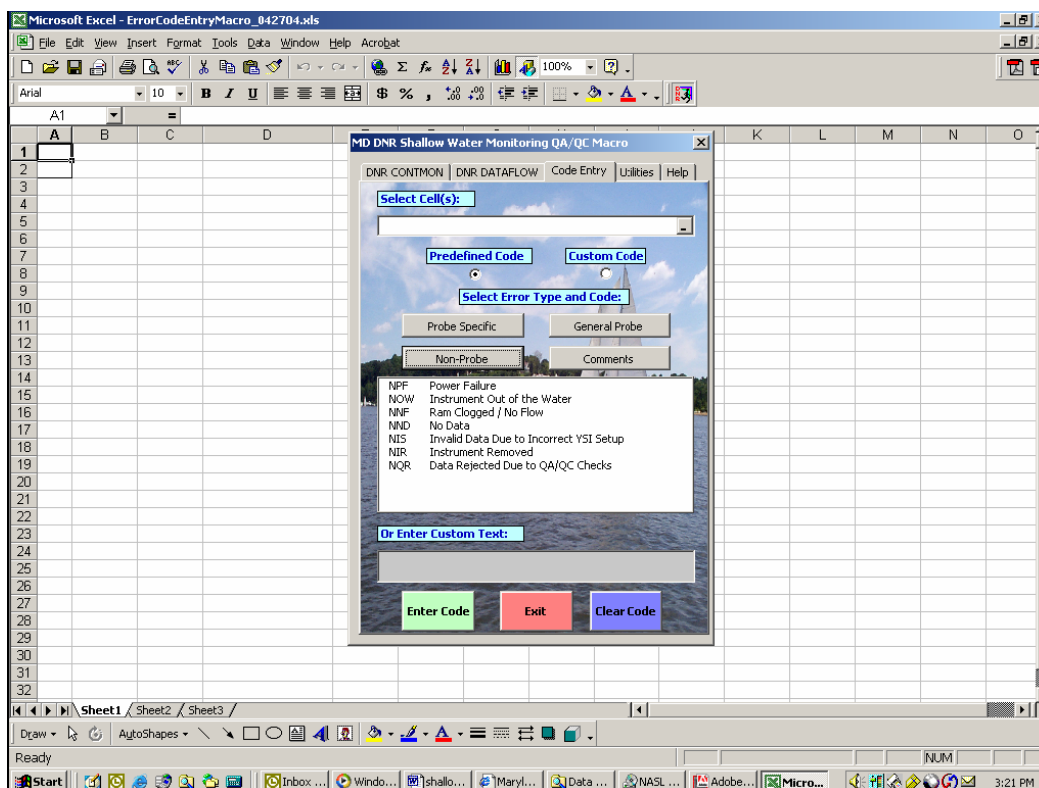


Figure A12_3. Screenshot of QA/QC macro's code entry screen.

11. Using the procedures outlined above in Step 9 to flag data, identify any suspicious data by inspecting the values flagged in red and the original data graphed in Ecowatch. Common anomalies include abnormal spikes in chlorophyll and turbidity, abnormal dips in specific conductance, and abnormally high dissolved oxygen readings due to high dissolved oxygen charge. Post-calibration and *in-situ* field checks should also be used to identify when probes are reading incorrectly.

NOTE: Do not be too quick to flag data. Flagging data is necessary to remove obvious outliers from the data set. Strange things can and do occur in Maryland waters, and we do not want to flag an anomaly just because it seems out of place. Anomalies should be identified, but must not be flagged unless there is proper justification. If you feel a period of data is questionable, but should not be excluded, keep it unflagged in the data set, but mention it in the comments field.

12. Once all of the error codes and comments have been entered into the data file, close the macro and save the file as a Comma Separated Value (.CSV) file using the same naming convention as above with a "Q" added to the end (e.g., JUG0718Q.csv).

13. Next select the Utilities tab of the QA/QC Macro and follow this sequence: adjust the times, convert file to V2 web format, and then save as .CSV file without Q.

The resulting .CSV file can then be imported into DNR's database. The QA/QC'd data can also be posted to the Eyes on the Bay (www.eyesonthebay.net) website to overwrite any existing provisional real-time data.

There should be four files when a data set is complete. In our example, these files would be:

JUG0718.dat (Raw data - no editing),

JUG0718.CDF (Raw file ready to import into excel),

JUG0718Q.csv (Final QA/QC'd file with erroneous data masked), and

JUG0718.csv (Web formatted file that has undergone complete QA/QC)

Appendix 13. Water Quality Mapping Data Verification and Management Procedures

W. Nelson, B. Cole, M. Trice

Revised: 5/10/2007

- 1) Open raw .txt file created by DATAFLOW / Labview Software in Excel
- 2) Use the file naming convention of the segment three-letter designation followed by the two-digit month, the two-digit day and the four-digit year and save the raw data file
- 3) Delete all data from probe/sensor warm up, until they reach equilibrium. If there is excessive (more than one minute) data collected while boat is stationary after initial start up at boat ramp that should also be deleted. Remove all data that has no associated GPS coordinate data, or data that are instrument error codes or 'garbage' characters.
- 4) Run the QA/QC macro by clicking the "ROX sensor" box, then clicking the "REARRANGE DATAFLOW DATA" button on the "DNR DATAFLOW" tab of the macro dialog (Figure A13_1). When this button is clicked, the existing data columns are rearranged, new data columns are added, and error code columns are added. Error code fields are designated by the suffix "_A". The columns are ordered as follows:

SAMPLE_DATE
SAMPLE_TIME
STATION
WATER_BODY
PRI_SEG
SONDE
LATITUDE
LONGITUDE
TOTAL_DEPTH
TOTAL_DEPTH_A
BOAT_SPEED
BOAT_SPEED_A
BATT
BATT_A
WTEMP
WTEMP_A
SPCOND
SPCOND_A
SALINITY
SALINITY_A
DO_SAT
DO_SAT_A
DO
DO_A
PH
PH_A
TURB_NTU
TURB_NTU_A
FLUOR
FLUOR_A
TCHL_PRE_CAL
TCHL_PRE_CAL_A

CHLA
CHLA_A
COMMENTS

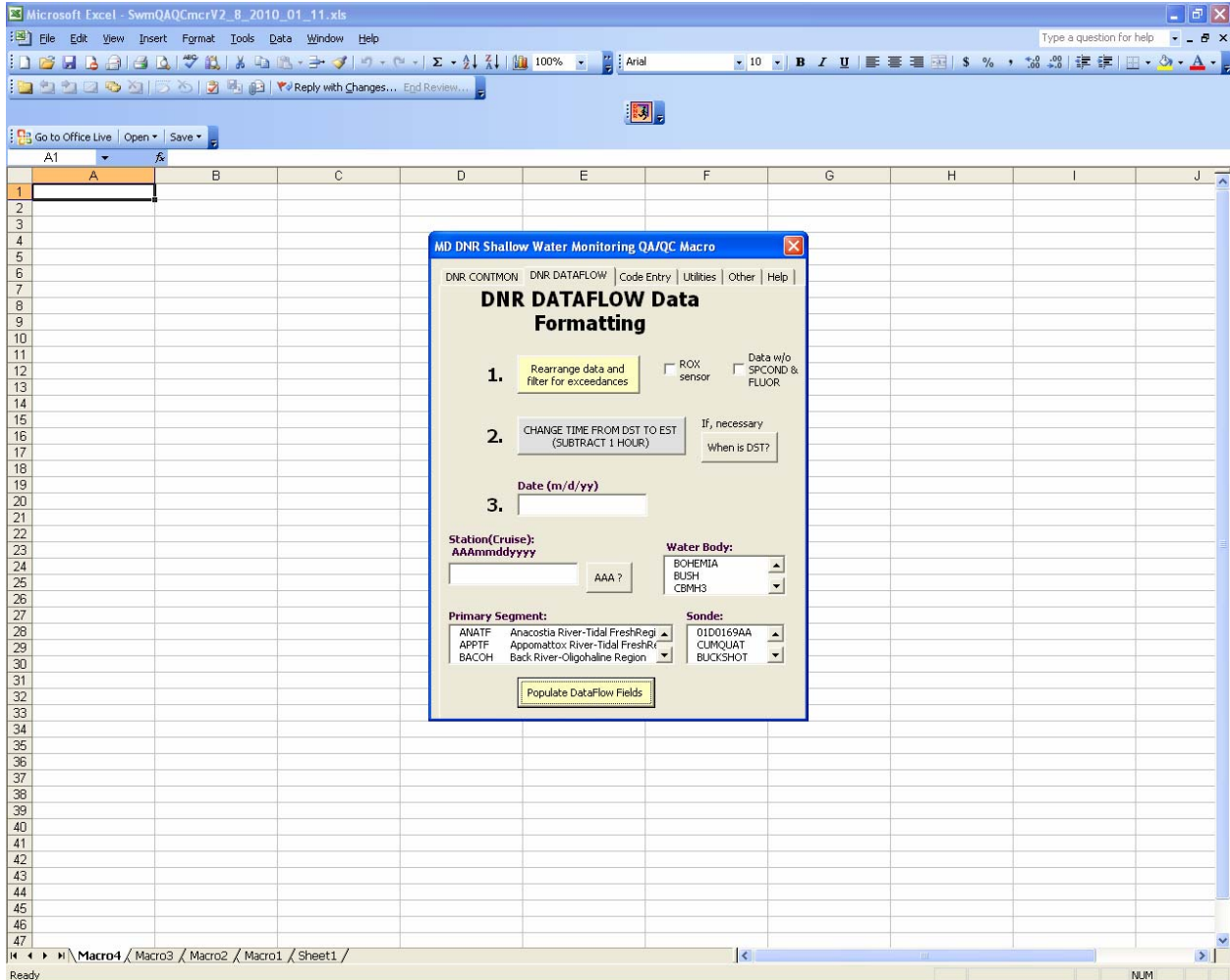


Figure A13_1. Screenshot of the QA/QC macro for continuous monitoring data formatting.

- 5) When clicked, the “REARRANGE DATAFLOW DATA” button also flags negative values with the GNV error code, flags missing data with the NND error code, highlights values outside of set tolerance levels in red (Table A12_1 in Appendix 12), and returns an overview summary of exceedances (Figure A12_2 in Appendix 12). Tolerance levels are purposefully large to accommodate the diversity of data collected throughout Maryland’s Coastal and Chesapeake Bays.

Enter the Date, Station, select Water Body, select Primary Segment and select Sonde information for the deployment being reviewed into the macro dialog box and click “POPULATE DATAFLOW FIELDS”. This inserts these parameters into each record.

6) Flagging Values with the QA/QC Macro:

Sound data management practices dictate that data should never be deleted. As such, we employ a data management system in which all original data values are retained in the database, but erroneous data are masked with an error code (see Appendix 12 for list of error codes). Each parameter value field also has an error code field associated with it and is designated with the suffix “_A” (e.g., DO_A). Error codes should only be written to the error code fields. Comments should only be written to the COMMENTS field. Because the data file is comma separated, a comma should never be used to separate comments in the COMMENTS field; a semi-colon can be used instead. The following steps outline how the QA/QC Macro can be used to insert error codes and comments.

- a) Go to the “CODE ENTRY” tab of the QA/QC macro to access all of the tools necessary to enter error codes and comments in selected cells (Figure A13_1).
- b) Use the “SELECT CELLS” box to select the cells of the spreadsheet in which you want to enter error codes or comments.
- c) After the cells have been selected, choose a “PREDEFINED CODE” or “CUSTOM CODE” by selecting the appropriate button.

NOTE: Custom codes should only be used for comments. They should never be used for error codes because the database only recognizes predefined error codes.

- d) Select either a “PROBE SPECIFIC”, “GENERAL PROBE”, “NON-PROBE” or “COMMENTS” code by clicking the appropriate radio button, or if applicable, type in a custom comment.
 - e) Select the appropriate code and click the “ENTER CODE” button.
 - f) Repeat Steps b-e as necessary.
- 7) Using the procedures outlined above in Step 7 to flag data, identify any suspicious data by inspecting the values flagged in red and the original data graphed in Ecowatch. Common anomalies include abnormal spikes in chlorophyll and turbidity, abnormal dips in specific conductance, and abnormally high dissolved oxygen readings due to high dissolved oxygen charge. Post-calibration and *in-situ* field checks should also be used to identify when probes are reading incorrectly.

NOTE: Do not be too quick to flag data. Flagging data is necessary to remove obvious outliers from the data set. Strange things can and do occur in Maryland waters, and we do not want to flag an anomaly just because it seems out of place. Anomalies should be identified, but must not be flagged unless there is proper justification. If you feel a period of data is questionable, but should not be excluded, keep it unflagged in the data set, but mention it in the comments field.

- 8) Once all of the error codes and comments have been entered into the data file, close the macro and save the file as a Comma Separated Value (.CSV) file using the same naming convention as above with a “Q” added to the end (e.g., SEV05242004Q.csv).

The resulting .CSV file can then be imported into DNR’s database.

There should be two files when a data set is complete. In our example, these files would be:

SEV05242004R.csv (Raw data - no editing),

SEV05242004Q.csv (Final QA/QC’d file with erroneous data masked)

Appendix 14. Log of Significant Changes

MARYLAND DEPARTMENT OF NATURAL RESOURCES SHALLOW WATER MONITORING (SWM) PROGRAM

Log of Significant Changes

Date Initiated	Procedural Changes
2003	Beginning in 2003, YSI6026 turbidity sensors were upgraded to YSI6136 turbidity sensors. This process took two years. Since the beginning of the 2005 sampling season, turbidity data has exclusively been collected with the YSI6136.
2007	Beginning in 2007, YSI6562 dissolved oxygen sensors were upgraded to YSI6150 ROX optical sensor. This process is ongoing.
July 1, 2007	Beginning in 2007, SWM samples from the Chesapeake Bay Shallow Water Monitoring sites were no longer processed for silicates.
September 10, 2007	Upgraded Deionized Water generator to a reverse osmosis/UV system.
January 2009	Dissolved Organic Carbon (DOC) samples were collected in previous years during Continuous Monitoring and Water Quality Mapping. Beginning in 2009, DOC will cease being collected on Water Quality Mapping surveys. Continuous Monitoring DOC samples are collected only at Maryland Coastal Bay stations.
January 2010	A full suite of nutrient samples will no longer be collected from all Continuous Monitoring sites and Water Quality Mapping Surveys. Samples from six Continuous Monitoring sites and Water Quality Mapping Surveys in the Corsica River will be analyzed for the same full suite of nutrients as those measured for the Chesapeake Bay Mainstem Program (chlorophyll <i>a</i> , pheophytin, total dissolved nitrogen, particulate nitrogen, nitrite, nitrite + nitrate, ammonium, total dissolved phosphorus, particulate phosphorus, orthophosphate, particulate carbon, total suspended solids and volatile suspended solids) plus particulate inorganic phosphorus. Samples from an additional five Continuous Monitoring sites associated with the NERR System will be analyzed for a sub-set of nutrients (VSS, NH ₄ , PO ₄ , NO ₂ , TN, TP) and chlorophyll <i>a</i> . Samples from the remaining Continuous Monitoring sites and Water Quality Mapping Surveys will be analyzed for TSS and chlorophyll <i>a</i> only.
April 2010	Beginning in 2010, blank DI samples will be sent to CBL to check for contamination of DI water used in filtering samples for nutrient analyses.

Note: Because Shallow Water Monitoring assesses segments on a three year time scale, stations are necessarily relocated on a regular basis. Rather than include these station location changes in the Log of Significant Changes, all system sampling dates for Continuous Monitoring and Water Quality Mapping are listed in Tables 11 and 12, respectively.

For changes in detection limits of measured parameters, see Cole and Parham (2010; Appendix XIV)

Table 11. Deployment dates for Maryland DNR Continuous Monitoring Sites.

Tributary	Station Name	Stream Code	Years deployed
Bohemia River	Long Point	XJI8369	2007 2008 2009
Bush River	Church Point	XJG7461	2008 2009 2010
Bush River	Lauderick Creek	XJG4337	2003 2004 2005 2006 2007
Bush River	Otter Point Creek	XJG7035	2003 2004 2005 2006 2007 2008 2009 2010
Chesapeake Bay	Bay Bridge - Profiler	Pending	2010
Chesapeake Bay	Bay Bridge - Profiler - Bottom	Pending	2010
Chesapeake Bay	CBOS Baltimore Approach	XGF9082	2006
Chesapeake Bay	Down's Park	XHF6841	2009 2010
Chesapeake Bay	Fort Howard	XIF1735	2009 2010
Chesapeake Bay	Gooses Reef - Bottom (Buoy)	Pending	2010
Chesapeake Bay	Gooses Reef – Surface (Buoy)	Pending	2010
Chesapeake Bay	Gratitude Marina	XHG8442	2009 2010
Chesapeake Bay	Love Point	XHG2318	2009 2010
Chesapeake Bay	Sandy Pt. - East Beach	XHF0561	2004 2005 2006 2007
Chesapeake Bay	Sandy Pt. - South Beach	XHF0460	2004 2005 2006 2007 2008 2009 2010
Chesapeake Bay	Stump Point	XKH2870	2007 2008 2009
Chesapeake Bay	Susquehanna Flats	XKH0375	2007 2008 2009 2010
Chester River	Deep Landing	CHE0348	2003 2004 2005 2006
Chester River	Kent Narrows Inside	XGG8359	2007 2008 2009
Chester River	Kent Narrows Outside	XGG8458	2007 2008 2009
Chester River	Rolphs Wharf	XIH0077	2003 2004 2005 2006
Chicamomico River	Drawbridge	CCM0069	2000 2001 2002 2003
Choptank River	High Banks	CHO0417	2006 2007 2008
Choptank River	Horn Point Lab	XEH5622	2006 2007 2008
Choptank River	Jamaica Pt	XEI7405	2006 2007 2008
Choptank River	Mulberry Pt.	XFG5054	2006 2007 2008
Corsica River	Emory Creek	XHH5046	2005 2006
Corsica River	Possum Point - Bottom	XHH4931	2006 2007 2008 2009 2010
Corsica River	Possum Point - Surface	XHH4931	2006 2007 2008 2009 2010
Corsica River	Sycamore Pt.	XHH3851	2005 2006 2007 2008 2009 2010
Corsica River	The Sill - Bottom	XHH4916	2006 2007 2008 2009 2010
Corsica River	The Sill - Surface	XHH4916	2006 2007 2008 2009 2010
Eastern Bay	CBEC	XGG6667	2005 2006 2007 2008
Eastern Bay	Hambleton Point	XFG9164	2004 2005 2006
Eastern Bay	Kent Point	XGF0681	2004 2005 2006
Elk River	Hollywood Beach	XKI0256	2007 2008 2009
Elk River	Locust Point Marina	XKI3890	2007 2008 2009
Fishing Bay	Fishing Bay	XCH8097	2003 2004 2005
Gunpowder River	APG @ Edgewood	XJG2718	2003 2004 2005
Gunpowder River	Mariners Point Park	XJF4289	2003 2004 2005
Honga River	House Point	XCG9168	2008 2009 2010
Honga River	Muddy Hook Cove	XCG5495	2008 2009 2010
Little Choptank River	Casson Pt.	XEG2646	2005 2006 2007
Little Choptank River	Garys Creek	XEG4991	2005 2006 2007

Table 11. Deployment dates for Maryland DNR Continuous Monitoring Sites, continued...

Tributary	Station Name	Stream Code	Years deployed
Magothy River	Cattail Creek	CTT0014	2000 2001
Magothy River	Stonington	XHF3719	2000 2001 2002 2003
Magothy River	Whitehurst	CTT0001	2002 2003
Middle River	Cutter Marina	MDR0038	2003 2004 2005
Middle River	Strawberry Point	FRG0002	2003 2004 2005
Northeast River	Carpenters Point	XKH2797	2007 2008 2009
Northeast River	Charlestown	XKI5022	2007 2008 2009
Patapsco River	Baltimore Harbor (Fort McHenry)	XIE5748	2000 2001 2002 2003 2004 2005 2006 2007 2008 2009 2010
Patapsco River	Fort Armistead	XIE2581	2009 2010
Patapsco River	Fort Smallwood	XHF9808	2009 2010
Patapsco River	Masonville Cove	XIE4741	2009 2010
Patuxent River	Benedict	XED0694	2003 2004 2005
Patuxent River	Chesapeake Biological Lab	XCF9029	2003 2004 2005
Patuxent River	Iron Pot Landing	WXT0013	2003 2004 2005 2006 2007 2008 2009 2010
Patuxent River	Jug Bay	PXT0455	2003 2004 2005 2006 2007 2008 2009 2010
Patuxent River	Kings Landing	PXT0311	2003 2004 2005
Patuxent River	Mataponi	MTI0015	2003 2004 2005 2006 2007 2008 2009 2010
Patuxent River	Pin Oak	XDE4587	2003 2004 2005 2006 2007
Pocomoke River	(Beverly / Cedar Hall Warf)	POK0043	1999 2000 2001 2002
Pocomoke River	Rehobeth	POK0087	2000 2001 2002
Pocomoke River	Shelltown	POK0009	1999 2000 2001 2002
Potomac River	Blossom Pt	XDB4544	2006 2007 2008
Potomac River	Breton Bay (Pawpaw Point)	XCD5599	2006 2007 2008 2009
Potomac River	Fenwick	XFB0231	2004 2005 2006 2007 2008
Potomac River	Indian Head	XEB5404	2009 2010
Potomac River	Mattawoman	XEA3687	2004 2005 2006 2007 2008 2009 2010
Potomac River	Piney Point	XBE8396	2004 2005 2006 2007 2008
Potomac River	Piscataway	XFB2184	2004 2005 2006 2007 2008
Potomac River	Popes Creek	XDC3807	2006 2007 2008
Potomac River	Port Tobacco	XDB8884	2007 2008
Potomac River	Ragged Point (Profiler)	XCE0055	2007 2008
Potomac River	Sandy Point (Profiler)	XBE5486	2009
Potomac River	Sage Point	XBF6843	2004 2005
Potomac River	St Georges Creek	XBF7904	2006 2007 2008 2009 2010
Potomac River	St Mary's College	XCF1440	2008 2009 2010
Potomac River	Swan Pt.	XCC8346	2006 2007 2008
Potomac River	Wicomico Beach	XCC9680	2006 2007 2008
Rhode River	SERC	XGE3275	2004 2005 2006 2007 2009 2010
Sassafras River	Budds Landing	XJI2396	2007 2008 2009 2010
Sassafrass River	Betterton	XJH2362	2006 2007 2008 2009 2010
Sassafrass River	Georgetown Yacht Basin	XJI1871	2006 2007
Severn River	Ben Oaks	SEV0116	2002 2003

Table 11. Deployment dates for Maryland DNR Continuous Monitoring Sites, continued...

Tributary	Station Name	Stream Code	Years deployed
Severn River	Sherwood Forest	XHE1973	2002 2003
South River	Beards Creek	XGE7059	2004 2005 2006
South River	Cedar Point	XGE5984	2005
South River	Harness Cr. Downstream	ZDM0001	2004 2006 2007 2008
South River	Harness Cr. Upstream	ZDM0002	2004 2006 2007 2008
Susquehanna River	Havre de Grace	XKH2949	2007 2008 2009 2010
Transquaking River	Bestpitch	TRQ0088	2003 2004 2005
Transquaking River	Decoursey Bridge	TRQ0146	2000 2001
Tred Avon River	Tred Avon	XFG0995	2009
West River	Shady Side	XGE0284	2004 2005 2006
Wicomico River	Little Monie Creek	LMN0028	2006 2007 2008 2009 2010
Wicomico River	Upper Ferry	WIW0144	2006 2007 2008
Wicomico River	Whitehaven	XCJ6023	2006 2007 2008

Table 12. Maryland DNR Water Quality Mapping Systems - Years Sampled

River System	Years Sampled
Bohemia River	2007 2008 2009
Bush River	2003 2004 2005
Corsica River	2005 2006 2007 2008 2009 2010
Chesapeake Bay/CB3MH	2009 2010
Chester River	2003 2004 2005 2006
Choptank River	2006 2007 2008
Eastern Bay	2004 2005 2006
Elk River	2007 2008 2009
Fishing Bay	2003 2004 2005
Gunpowder River	2003 2004 2005
Honga River	2008 2009 2010
Little Choptank River	2005 2006 2007
Magothy River	2001 2002 2003
Middle River	2003 2004 2005
Northeast River	2007 2008 2009
Patapsco River	2009 2010
Patuxent River	2003 2004 2005 2006
Potomac River	2006 2007 2008
St. Mary's River	2004 2005 2006 2007 2008
Sassafras River	2007 2008 2009
Severn River	2001 2002 2003
South River	2004 2005 2006
Susquehanna River/CB1TF	2007 2008 2009
West/Rhode Rivers	2004 2005 2006
Wicomico Rivers	2006 2007 2008