

Maryland
Dept. of Natural Resources
Shallow Water Monitoring

Water Quality Mapping
Grab Sample
Stations 2009

Chesapeake Bay

Susquehanna
Flats

Patapsco R.

Northeast R.

Elk R.

Bohemia R.

Sassafras R.

Corsica R.

Honga R.

Wicomico R.

CB 3MH

0 4.5 9 18 27 Miles

18-Nov-2009

76°12'0"W

75°54'0"W

39°36'0"N

39°36'0"N



Maryland
Dept. of Natural Resources
Shallow Water Monitoring

Water Quality Mapping

Grab Sample Stations

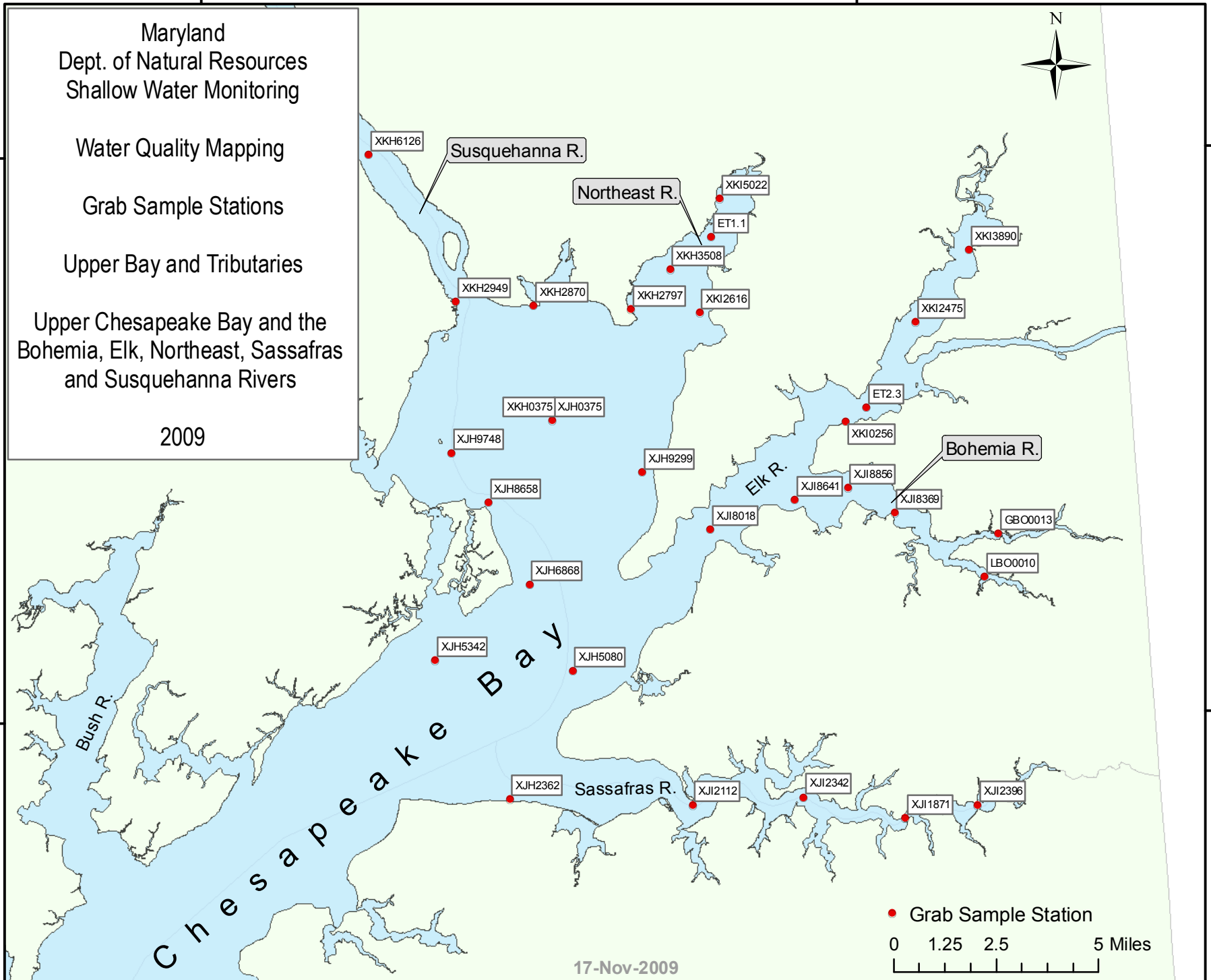
Upper Bay and Tributaries

Upper Chesapeake Bay and the
Bohemia, Elk, Northeast, Sassafras
and Susquehanna Rivers

2009

39°24'0"N

39°24'0"N



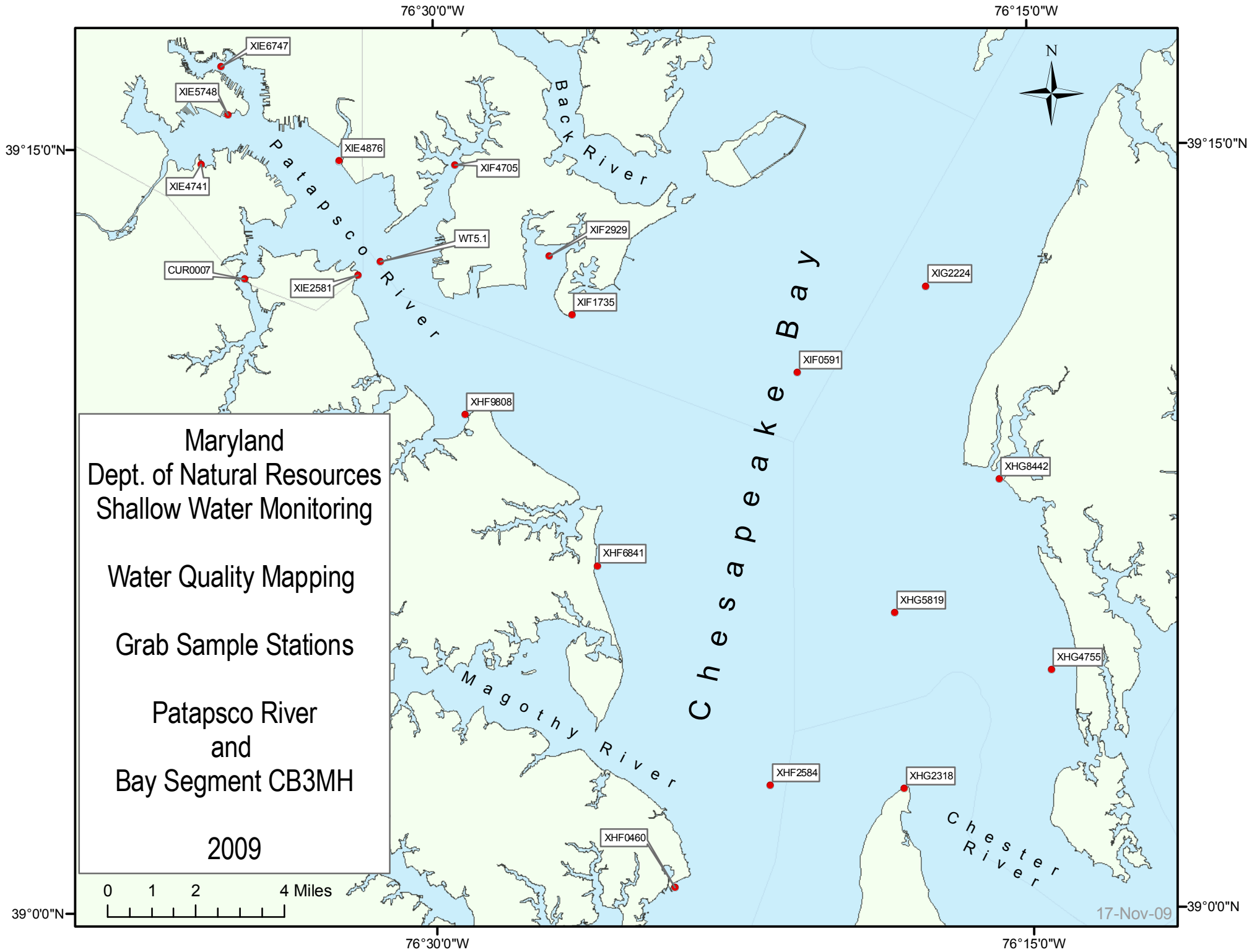
● Grab Sample Station

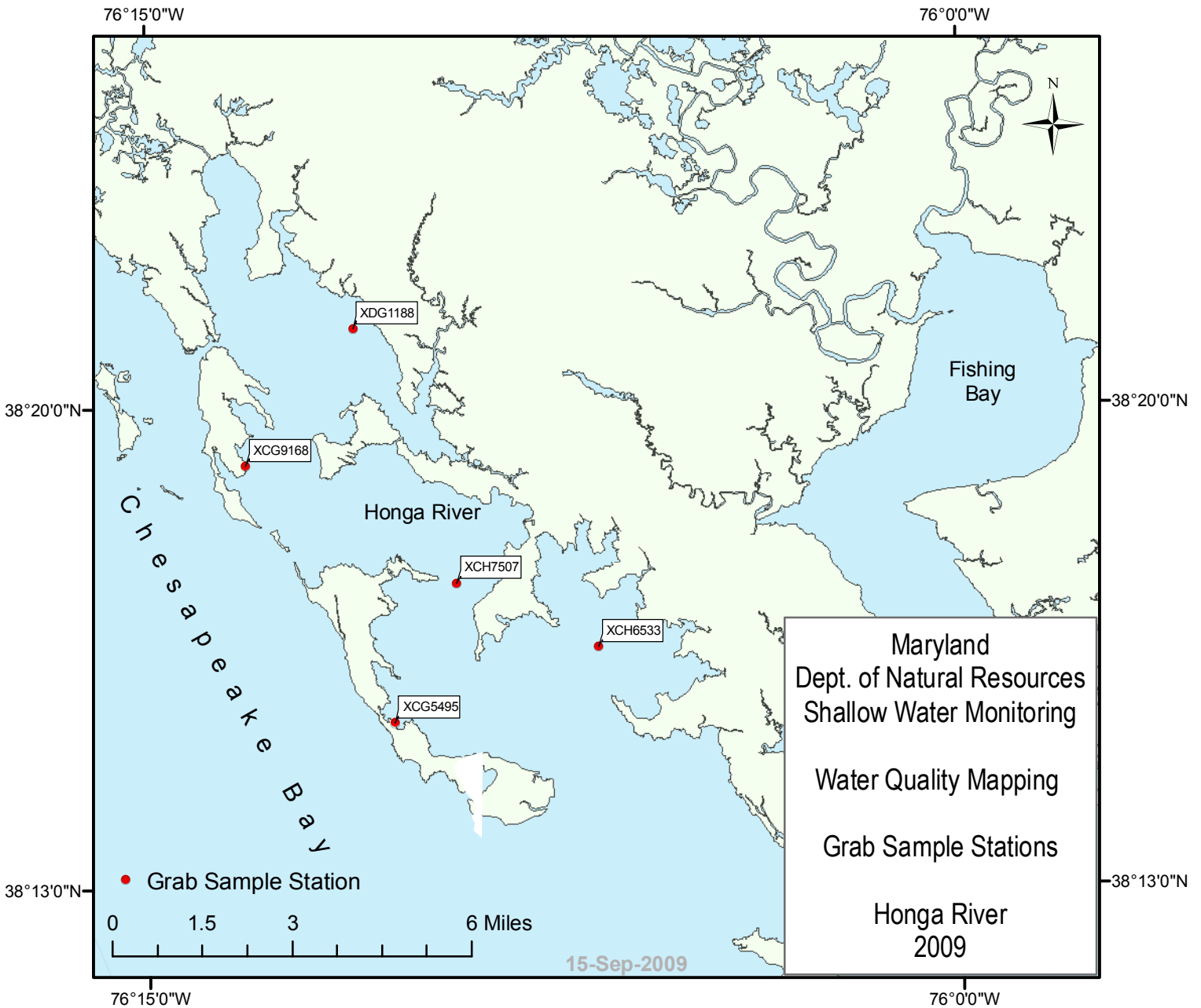
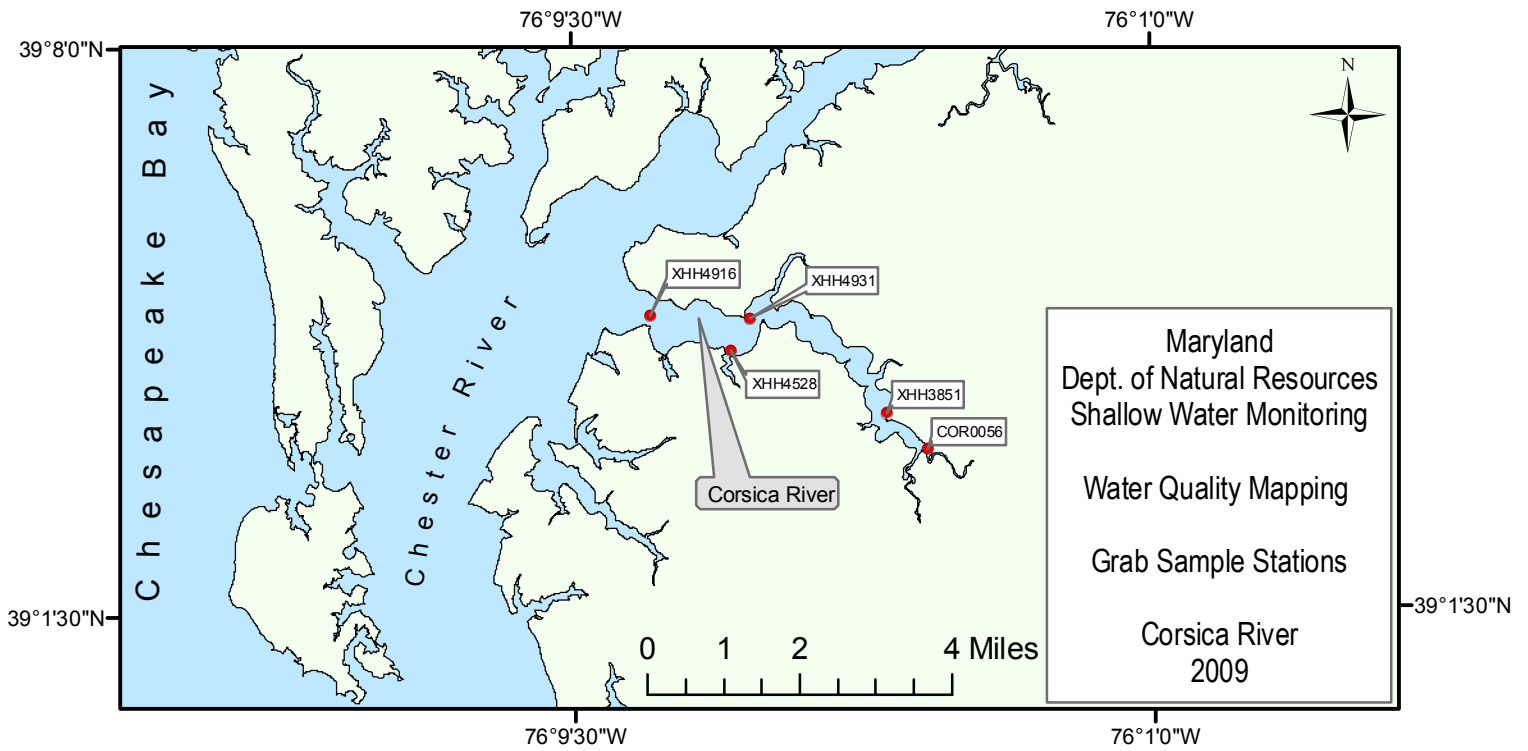
0 1.25 2.5 5 Miles

17-Nov-2009

76°12'0"W

75°54'0"W





Station	WaterBody	Latitude	Longitude
COR0056	Corsica River	39.0558	-76.0718
CUR0007	Patapsco River	39.2076	-76.5798
ET1.1	Northeast River	39.5698	-75.9678
ET2.3	Elk River	39.5087	-75.8978
GB00013	Bohemia River	39.4637	-75.8383
LB00010	Bohemia River	39.4484	-75.8449
WT5.1	Patapsco River	39.2131	-76.5225
XCG5495	Honga River	38.2565	-76.1743
XCG9168	Honga River	38.3191	-76.2196
XCH6533	Honga River	38.2746	-76.1114
XCH7507	Honga River	38.2903	-76.1548
XDG1188	Honga River	38.3523	-76.1862
XHF0460	Northern Chesapeake Bay	39.0075	-76.4003
XHF2584	Northern Chesapeake Bay	39.0407	-76.3600
XHF6841	Northern Chesapeake Bay	39.1129	-76.4322
XHF9808	Patapsco River	39.1627	-76.4875
XHG2318	Chesapeake Bay	39.0394	-76.3038
XHG4755	Chesapeake Bay	39.0779	-76.2416
XHG5819	Chesapeake Bay	39.0970	-76.3073
XHG8442	Chesapeake Bay	39.1405	-76.2630
XHH3851	Corsica River	39.0628	-76.0816
XHH4528	Corsica River	39.0749	-76.1198
XHH4916	Corsica River	39.0818	-76.1392
XHH4931	Corsica River	39.0812	-76.1149
XIE2581	Patapsco River	39.2085	-76.5322
XIE4741	Patapsco River	39.2453	-76.5978
XIE4876	Patapsco River	39.2461	-76.5396
XIE5748	Patapsco River	39.2613	-76.5863
XIE6747	Patapsco River	39.2771	-76.5892
XIF0591	Chesapeake Bay	39.1757	-76.3475
XIF1735	Chesapeake Bay	39.1953	-76.4421
XIF2929	Patapsco River	39.2144	-76.4516
XIF4705	Patapsco River	39.2445	-76.4909
XIG2224	Chesapeake Bay	39.2037	-76.2932
XJH2362	Sassafras River	39.3717	-76.0625
XJH5080	Northern Chesapeake Bay	39.4167	-76.0333
XJH5342	Northern Chesapeake Bay	39.4209	-76.0960
XJH6868	Northern Chesapeake Bay	39.4475	-76.0525
XJH8658	Northern Chesapeake Bay	39.4767	-76.0709
XJH9299	Northern Chesapeake Bay	39.4866	-76.0006
XJH9748	Northern Chesapeake Bay	39.4943	-76.0876
XJI1871	Sassafras River	39.3632	-75.8823
XJI2112	Sassafras River	39.3689	-75.9792
XJI2342	Sassafras River	39.3712	-75.9286
XJI2396	Sassafras River	39.3677	-75.8494
XJI8018	Elk River	39.4663	-75.9697
XJI8369	Bohemia River	39.4713	-75.8857
XJI8641	Bohemia River	39.4764	-75.9310
XJI8856	Bohemia River	39.4805	-75.9068
XKH0375	Northern Chesapeake Bay	39.5053	-76.0414
XKH2797	Northeast River	39.5443	-76.0049
XKH2870	Northern Chesapeake Bay	39.5460	-76.0494
XKH2949	Northern Chesapeake Bay	39.5478	-76.0848
XKH3508	Northeast River	39.5583	-75.9867
XKH6126	Northern Chesapeake Bay	39.6001	-76.1239
XKI0256	Elk River	39.5039	-75.9075
XKI2475	Elk River	39.5387	-75.8750
XKI2616	Northeast River	39.5429	-75.9735
XKI3890	Elk River	39.5640	-75.8501
XKI5022	Northeast River	39.5831	-75.9638